



Mk 10



technical



## **Mk 10**

Highly developed demountable partition to provide total flexibility for modern workspaces. Mk 10 divides work areas with style and function.

## **Index**

demountable partitions - floor to ceiling **02**

demountable partitions/doors - floor to ceiling **03**

demountable partitions - off ceiling 2100 mm high **04**

demountable partitions/door - off ceiling 2100 mm high **05**

typical junction and connectors **06-07**

accessories **08**

product specifications **09**



# Demountable partitions

## floor to ceiling

Mk 10 is both a 'to ceiling' and 'off ceiling' fully demountable partitioning system. Factory finished to exact standards both technically and aesthetically, the highly functional side clipping system permits rapid on-site assembly and disassembly.

It also allows access to individual panels for re-arrangement with maximum convenience.

### Key features

- Factory finished
- High rigidity
- Modularity
- Fully demountable
- Cable reticulation
- Numerous optional finishes

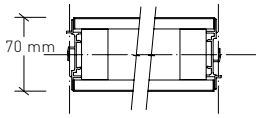
Mk 10 can be constructed to achieve a range of acoustic performance levels to specification

### TYPICAL PARTITION PANEL ELEVATIONS Height: nominal 2700 mm (floor to ceiling)

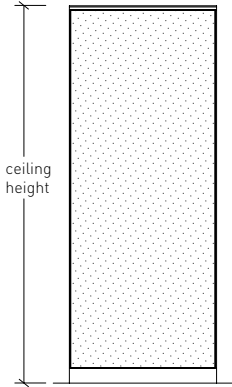
#### type A Partition

Full height solid

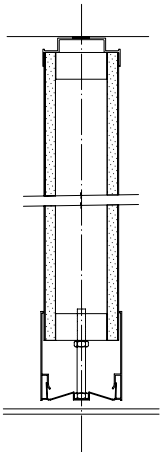
Plan



Elevation



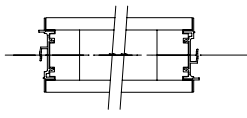
Section



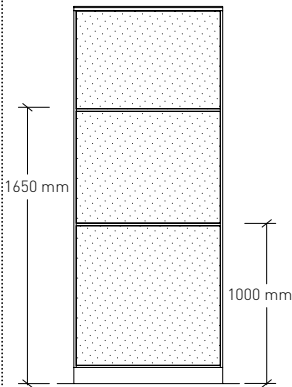
#### type AT Partition

Full height solid with two transom rails for attachment of accessory panels, shelves, trays etc

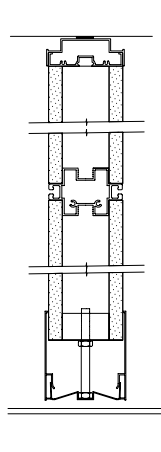
Plan



Elevation



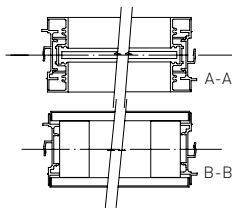
Section



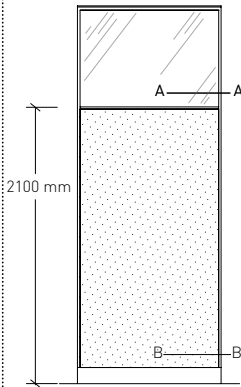
#### type B Partition

Full height solid to 2100 mm  
Glass above

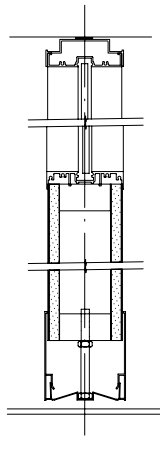
Plan



Elevation



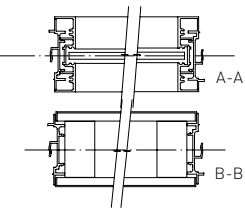
Section



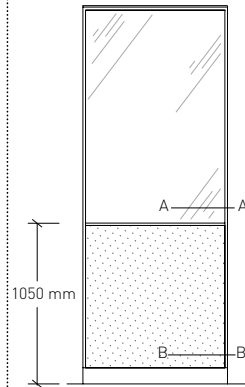
#### type C Partition

Full height solid to sill  
Glass above

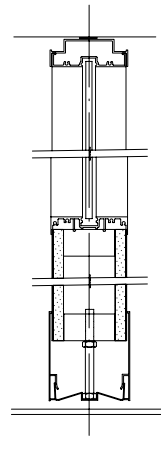
Plan



Elevation



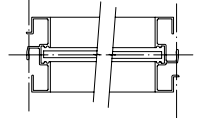
Section



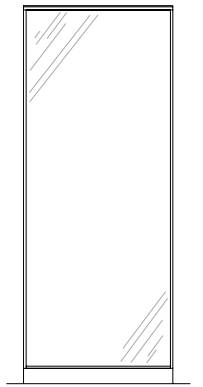
#### type H Partition

Full height glass

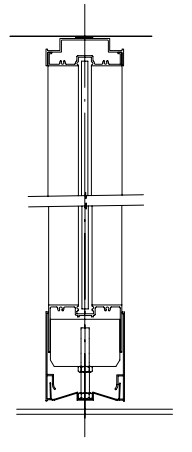
Plan



Elevation



Section



# Demountable partitions/doors

floor to ceiling

## Finishes

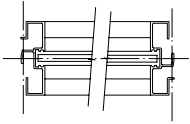
- Aluminium - powder coated finish colour to specification or anodised
- Panel faces - vinyls, wallpapers, laminates, timber veneers, powder coat or site painted in plain or decorative finishes
- Glazing - glass thickness to Australian Standard AS 1288-1973  
Colour and finish to specification

### TYPICAL PARTITION PANEL + DOOR ELEVATIONS Height: nominal 2700 mm (floor to ceiling)

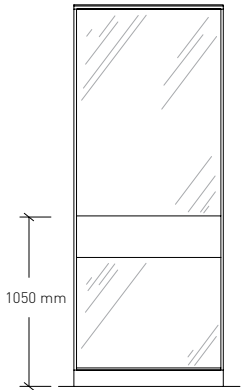
#### type H/C/R Partition

Full height glass, with 200 mm rail

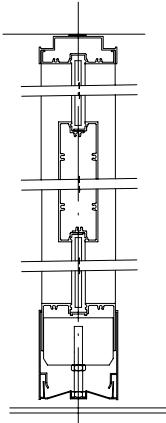
Plan



Elevation



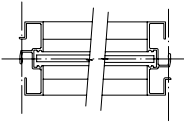
Section



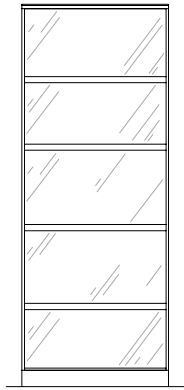
#### type H/R/R Partition

Full height glass, with 30 mm rails

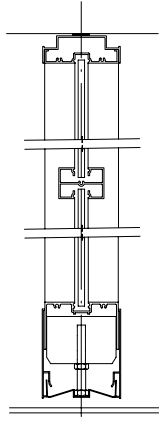
Plan



Elevation



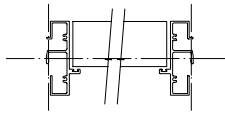
Section



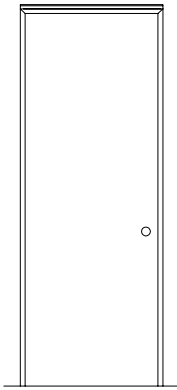
#### type A Door

Full height hinged, flush panel

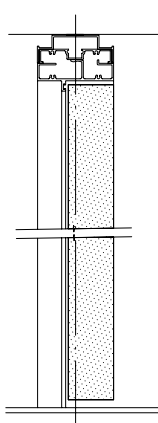
Plan



Elevation



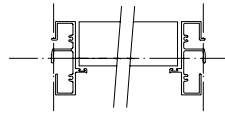
Section



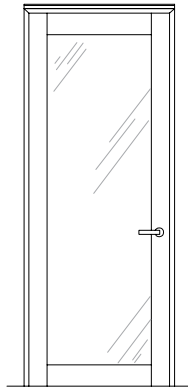
#### type H Door

Full height hinged, aluminium framed glass

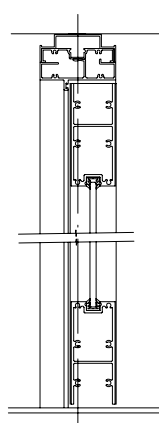
Plan



Elevation

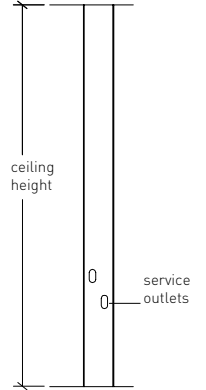
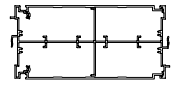


Section



#### type PP Power Panel

Aluminium construction



**Power Panels** are installed between partitions or at the start of partition runs. Service cables are reticulated from the ceiling through the power panel to the specified outlets. Outlets can be located on either one or both faces of the power panel. Anodised or powder coat finish. Colour to specification.

# Demountable partitions

off ceiling 2100 mm high

Mk 10 'off ceiling' (2100 mm high) demountable partitions have the same finish options, features and construction method as Mk 10 'full height' partitions. They can be applied as either a stand alone system or combined with the 'full height' partitions to achieve a seamless overall aesthetic.

### Key features

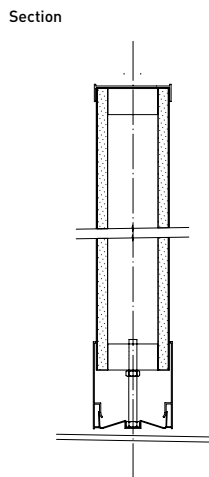
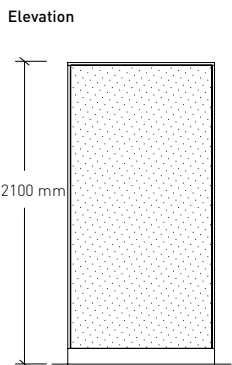
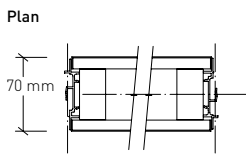
- Factory finished
- High rigidity
- Modularity
- Fully demountable
- Cable reticulation
- Numerous optional finishes

Mk10 can be constructed to achieve a range of acoustic performance levels to specification

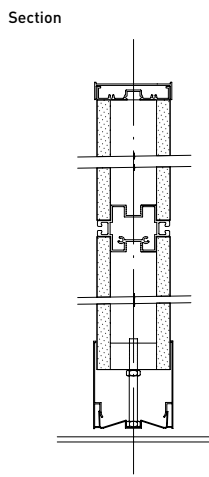
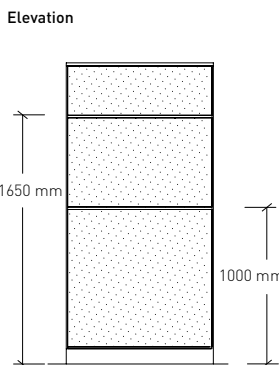
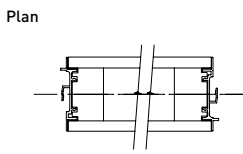
### TYPICAL PARTITION PANEL ELEVATIONS

Height: nominal 2100 mm (off ceiling)

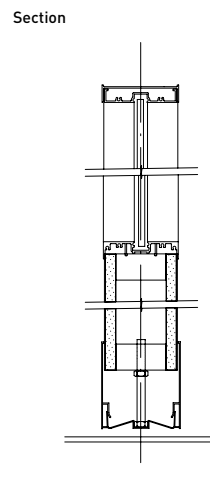
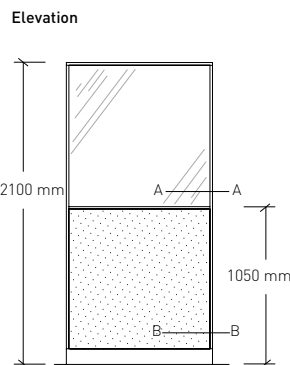
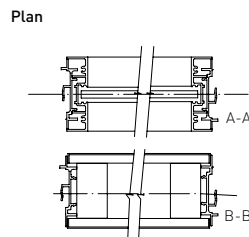
**type D Partition**  
2100 mm high, solid



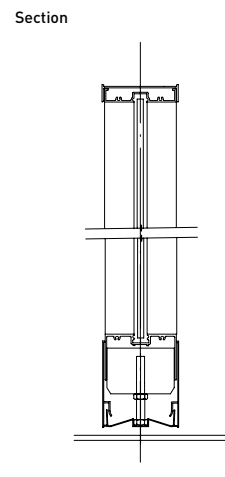
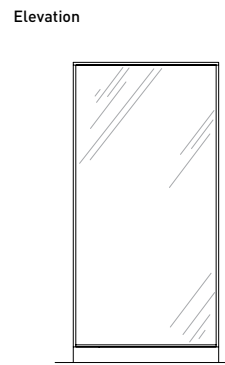
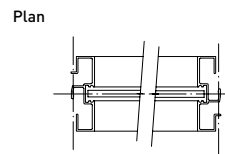
**type DT Partition**  
2100 mm high, solid with two transom rails for attachment of accessory panels, shelves, trays etc



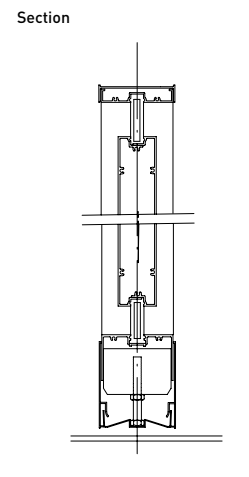
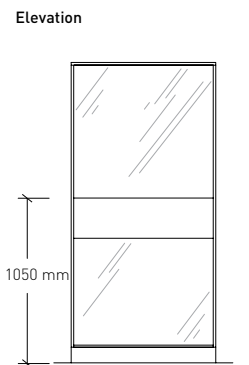
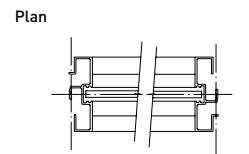
**type E Partition**  
2100 mm high solid to sill, glass above



**type J Partition**  
2100 mm high, full glass



**type J/C/R Partition**  
2100 mm high, full glass with 200 mm rail



## Finishes

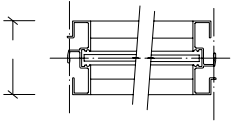
- Aluminium - powder coated finish colour to specification or anodised
- Panel faces - vinyls, wallpapers, laminates, timber veneers, powder coat or site painted in plain or decorative finishes
- Glazing - glass thickness to Australian Standard AS 1288-1973  
Colour and finish to specification

## TYPICAL PARTITION PANEL AND DOOR ELEVATIONS Height: nominal 2100 mm [off ceiling]

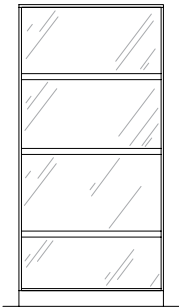
### type J/R/R Partition

2100 mm high, full glass  
with 30 mm rails

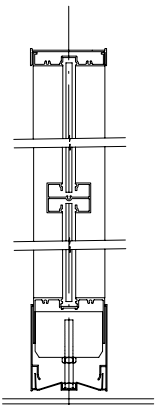
Plan



Elevation



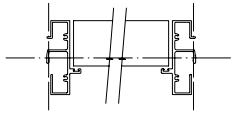
Section



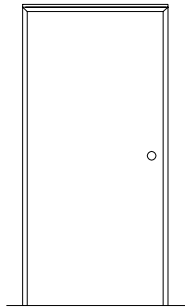
### type D Door

2100 mm high hinged,  
flush panel

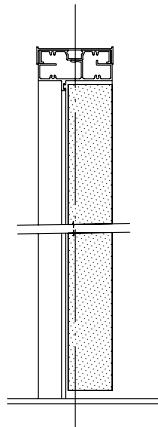
Plan



Elevation



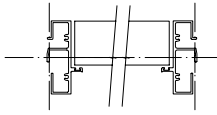
Section



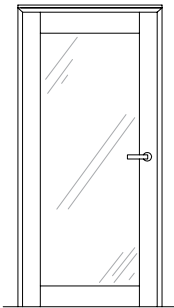
### type J Door

2100 mm high hinged,  
aluminium framed glass

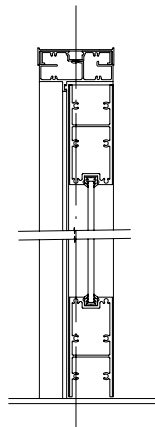
Plan



Elevation

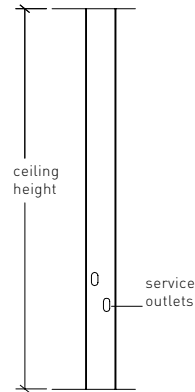
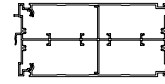


Section



### type PP Power Panel

Aluminium construction

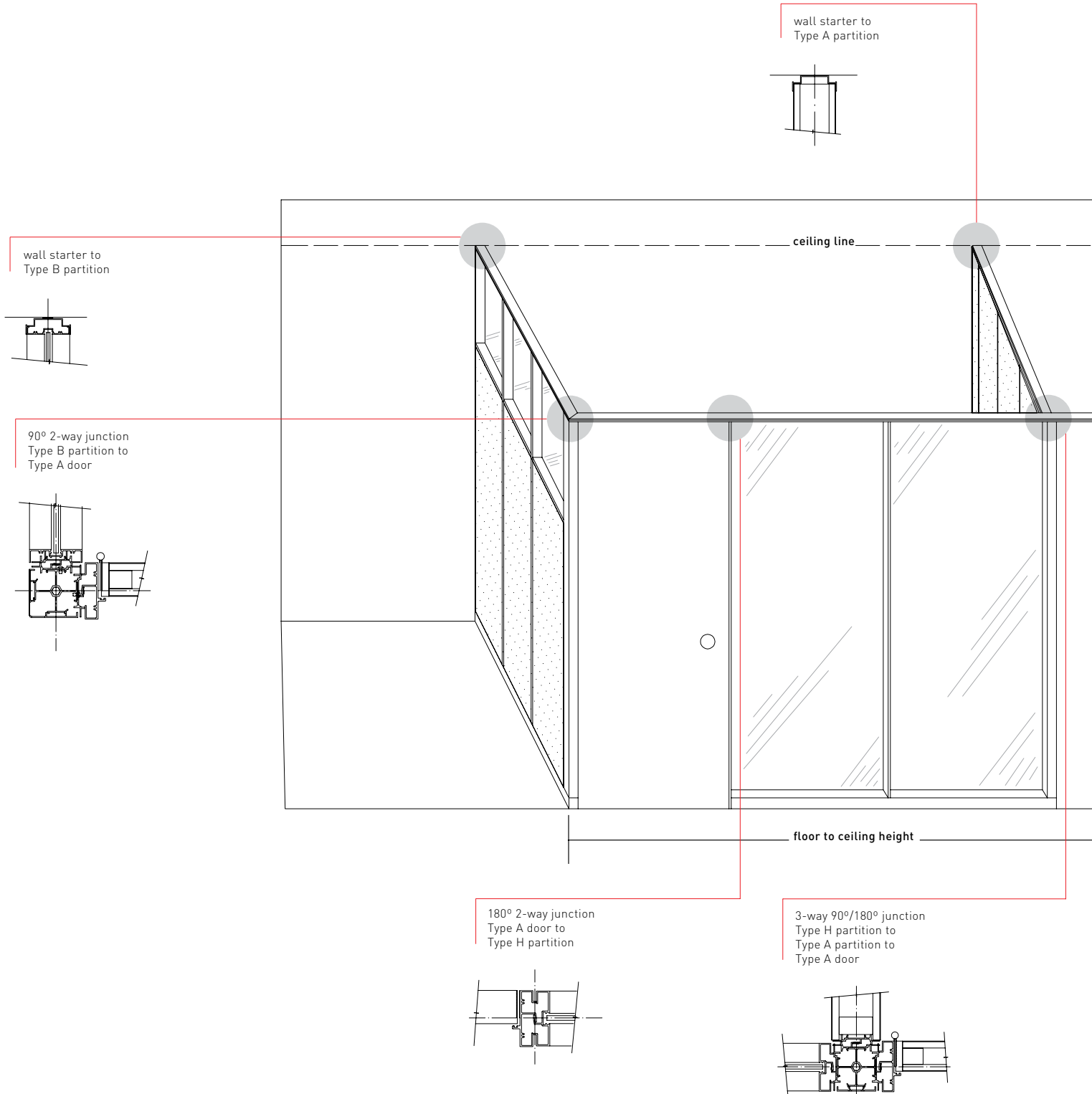


**Power Panels** are installed between partitions or at the start of partition runs. Service cables are reticulated from the ceiling through the power panel to specified outlets. Outlets can be located on either one or both faces of the power panel. Anodised or powder coat finish. Colour to specification.

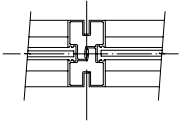
# Mk 10 demountable partitioning system

## typical junctions + connectors

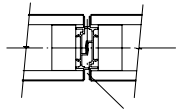
As well as being highly functional in assembly/disassembly, Mk 10's side clipping system also makes it possible to create junctions, to achieve practically any required configuration. The cross sections of junctions shown below illustrate the system's functionality and flexibility whilst requiring an economy of parts and materials.



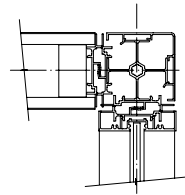
180° 2-way junction  
Type H/R/R partitions



180° 2-way junction  
Type A partitions



90° 2-way junction  
Type D partition to  
Type E partition



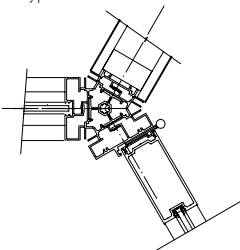
ceiling line

power panel

floor to ceiling height

off ceiling  
height 2100 mm

3-way 120° junction  
Type H/R/R partition to  
Type AT partition to  
Type J door

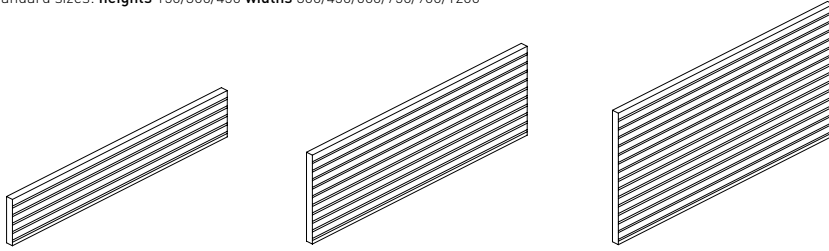


# Accessories

## function walls | accessories | Interpower

### FUNCTION WALLS

Attaches to transom rails of AT and DT Type Partitions via integral mounting detail. Additional brackets not required  
 Standard sizes: **heights** 150/300/450 **widths** 300/450/600/750/900/1200



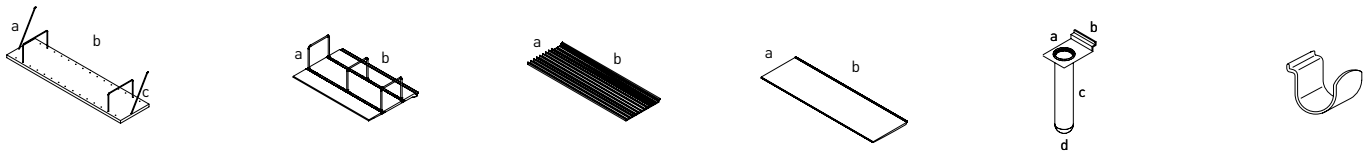
**height** 150 mm  
**type** FWT-150

**height** 300 mm  
**type** FWT-300

**height** 450 mm  
**type** FWT-450

### ACCESSORIES - FOR TRANSOM RAIL + FUNCTION WALL MOUNT

Accessories attach to function walls and transom rails of System 30, System 45, Ultimet panel and screen systems



**side\_a** 300 mm  
**side\_b** 600|750|900|1050|1200  
**side\_c** 250|300|350|410 mm  
**type** ULT/SHLF-25  
 Ultimet shelf

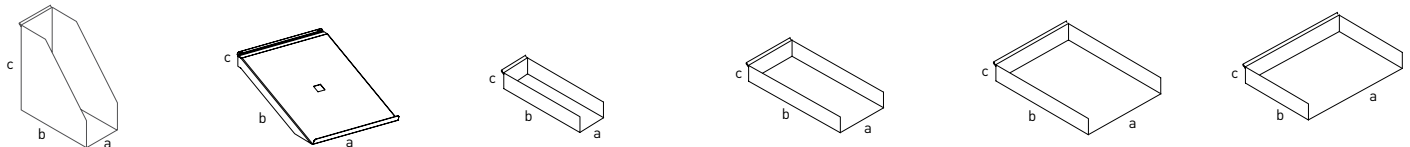
**side\_a** 300 mm  
**side\_b** 600|750|900|1050|1200  
**type** ULT/SHLF-LINE-0600-DIV  
 Ultimet slimline shelf

**side\_a** 200 mm  
**side\_b** 150|260|390|520  
**type** ULT/CD/SHELF  
 Ultimet CD holder 2-3-4

**side\_a** 225 mm  
**side\_b** 600|750|900|1050|1200  
**type** ULT/SL/SHELF-600  
 Ultimet slimline mini shelf

**side\_a** 67 mm  
**side\_b** 40 mm  
**side\_c** 125 mm  
**side\_d** 25 mm  
**type** ULT/VASE  
 Ultimet vase

**side\_a** 40 mm  
**side\_b** 40 (overall height)  
**type** TH/CH  
 Transom hung coat hook  
 Natural anodised finish



**side\_a** 115 mm  
**side\_b** 265 mm  
**side\_c** 272 mm  
**type** ULT/PHBOOK  
 Ultimet phone book holder

**side\_a** 245 mm  
**side\_b** 325 mm  
**side\_c** 39 mm  
**type** ULT/PHTRAY  
 Ultimet phone tray

**side\_a** 50 mm  
**side\_b** 158 mm  
**side\_c** 26 mm  
**type** ULT/PTRAY-SM  
 Ultimet pencil tray - small

**side\_a** 122 mm  
**side\_b** 319 mm  
**side\_c** 26 mm  
**type** ULT/PTRAY-LG  
 Ultimet pencil tray - large

**side\_a** 245 mm  
**side\_b** 319 mm  
**side\_c** 26 mm  
**type** ULT/STRAY  
 Ultimet stationery tray - portrait

**side\_a** 313 mm  
**side\_b** 251 mm  
**side\_c** 26 mm  
**type** ULT/STRAY-A4  
 Ultimet paper tray - A4 landscape

### INTERPOWER SOFTWIRING SYSTEM

Schiavello Interpower softwiring system delivers power and lighting to workstations. The system is easily connected, disconnected or relocated without the need to isolate power and with minimal inconvenience.

Refer to Schiavello Interpower brochure SCH/W05-C for complete product information and technical specifications

**code** PM2H  
**code** PM2H1VL  
**code** PM4VL  
 Power modules

**code** NGDM/2  
**code** NGDM/4  
**code** NGDM/6  
 Data modules

**code** JB-S  
 Junction box

**code** SS  
 Starter sockets

**code** EX-S00 (add length i.e. 600m lead = EX-S00600)  
 Extension leads

acoustics | finishes + construction | glazing | powder coating | cable reticulation  
 | warranty | sustainable

Mk 10 is a highly flexible, modular and fully demountable 70 mm thick partitioning system manufactured by Schiavello in Australia. All partitions and doors are factory manufactured and finished to exact standards both technically and aesthetically.

The functionality of the side clipping system enables quick, tidy installations with rapid disassembly when required. Individual partitions of the same size, solid and glazed, may be accessed for rearrangement without disturbing adjacent panels. All components are reusable.

**Acoustics**

Acoustic partitions are also offered as Mk 10 can be constructed to achieve a range of acoustic performance levels to client specification.

**Finishes + construction**

Partition faces may be finished in specified vinyls, wallpapers, laminates, timber veneers, powder coat or site painted in plain or decorative finishes.

Partition and door cores for the various finishes are constructed as follows:

- Finishes: vinyls, wallpapers
- Construction: timber frame with 10 mm or 12 mm plasterboard bonded to both faces aluminium extrusions to two long edges
- Finishes: laminate, timber veneers, powder coat or site painted
- Construction: timber frame with MDF bonded to both faces aluminium extrusions to two long edges  
 (Note: construction for AT and DT Type Partitions for all finishes is timber frame with MDF bonded to both faces)
- Doors: Standard doors are 44 mm thick either flush panel or glazed with aluminium frame
- Partition skirting is 100 mm high clip-on aluminium
- Door hardware: To client specification

**Glazing**

All glass is glazed in PVC gaskets finishing flush with aluminium extrusions. Glass finishes to client specification in accordance with AS 1288-1973.

**Powder coating**

All metal components are powder coated to Australian Standard AS 4506 2005 in a range of standard or custom colours.

**Cable reticulation**

The system, that can be hard or soft wired, includes integrated components that provide efficient means of routing service cabling from the ceiling, walls or floor. ie: Type PP power panel, and clip-on 100 mm skirting, allowing user convenient location of outlets.

The softwiring electrical system is Schiavello Interpower, certified to AS/NZS 3131

**Warranty**

Mk 10 is covered by a five year warranty against faulty materials and workmanship. This includes a guarantee to all standard parts, components and service for a period of no less than 10 years from date of installation.



**Sustainable**

Mk 10 is manufactured in accordance with international environmental standard, ISO 14001. The system has a durability life span of ≥ 10 years is entirely demountable, modular and designed for complete disassembly. Mk 10 can then be re-erected utilising 100 percent of all component parts. Mk 10 has been evaluated for its GBCA Green Star (MAT-3 Walls and Partitions) performance using Schiavello's Environmental

Management System (EMS) which requires all of the items set out under the Green Star criteria including product stewardship. Below is a simplified MAT-3 calculation spreadsheet noting several typical partition lining materials that can be used with the Mk10 system and their performance.

**GBCA Green star office interiors rating tool  
 MAT-3 calculator - walls and partitions**

Lining material (excluding painted finishes)	Resource Utilisation		Management							Reusability			
	Eco preferred content	Durability	EMS?	EMS ISO 14001 certified?	Waste minimisation	Energy	Emissions	Materials minimisation	Product stewardship	Modular	Designed for disassembly (maximum rating available for MAT-3)	Product Score(%)	Points awarded for this credit
Powerscape plasterboard (GECA certified)	≥ 20%	≥ 10 years	Yes	Yes	Yes	Yes	Yes	Yes	Yes	Yes	≥ 90%	100	3
CSR EC08 plasterboard (GECA certified)	≥ 20%	≥ 10 years	Yes	Yes	Yes	Yes	Yes	Yes	Yes	Yes	≥ 90%	100	3
Alpine FSC E0 MDF board	≥ 20%	≥ 10 years	Yes	Yes	Yes	Yes	Yes	Yes	Yes	Yes	≥ 90%	100	3
Laminex prefinished E0 MDF particle board (GECA certified)	≥ 20%	≥ 10 years	Yes	Yes	Yes	Yes	Yes	Yes	Yes	Yes	≥ 90%	100	3
Standard plasterboard	< 5%	≥ 10 years	Yes	Yes	Yes	Yes	Yes	Yes	Yes	Yes	≥ 90%	83	3
Standard E1 MDF board	< 5%	≥ 10 years	Yes	Yes	Yes	Yes	Yes	Yes	Yes	Yes	≥ 90%	83	3

