

**Project Location**  
 46-72 Flinders Street  
 Melbourne

**Client**  
 Australian Super  
 Developments Pty Ltd:  
 Kevin Fitzpatrick  
 Fiona Dunster  
 Chris Kakoufas

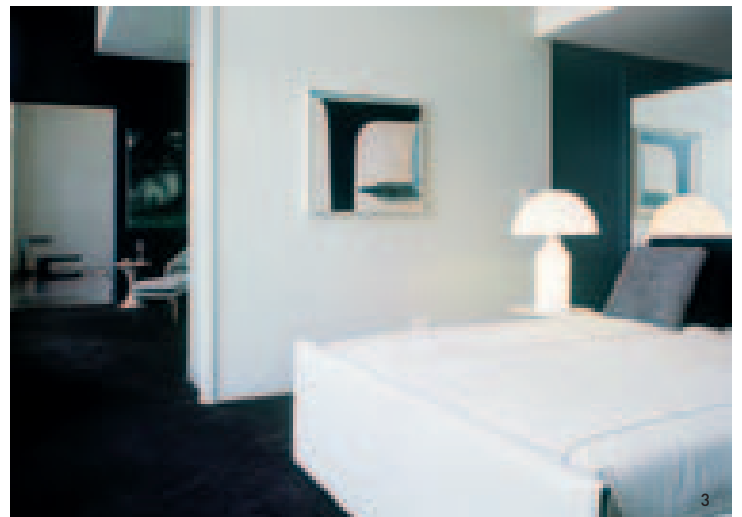
**Design**  
 HASSELL Ltd:  
 Robert Backhouse  
 Caroline Lieu  
 Michael Hrysomallis  
 Wayne Morrell  
 Juli Smolcic  
 Byron George  
 Robin Archer  
 Lorenzo Marianni  
 Anthony Dickens

**Schiavello Vic Fitout**  
 Daron Johnson  
 Carmelo Rositano  
 Andrew Belurov

**Schiavello [Prima  
 Architectural]**  
 Peter Klaaysen  
 John Woods  
 Darren Callander

**Area**  
 6500 m<sup>2</sup>

**Furniture Accessories**  
 Dedece, Euroluce,  
 Australian Art  
 Resources, Hub  
 Furniture Lighting  
 Living, Sutton Gallery



2

3

## HERALD LIVING APARTMENTS FITOUT

Transforming the majestic  
Melbourne icon, the Herald  
and Weekly Times building,  
into spaces for luxury living.

# HERALD LIVES ON

Herald Living offers a rare opportunity to reside within a piece of Melbourne's heritage, to breath new life into the grand neo classical forms of the former Herald and Weekly Times building; its façade and elegant interior spaces holding many stories that mark the city's evolution.

The iconic building on the corner of Flinders and Exhibition Streets was once occupied by the city's largest circulating daily newspaper from 1923-1995. Now, the building has been transformed into 56 spacious apartments over four levels, known as 'Herald Living', developed by Australian Super Developments [ASD]. According to the design team at HASSELL, in reference to the building's landmark status, the redevelopment is all about spacious volumes and quality finishes, appealing to the owner-occupier.

The interiors, by Schiavello as Head Contractor, offers a contemporary and luxurious living environment for people seeking the South East precinct of Melbourne's CBD as a home base, with everything at their fingertips - fine dining establishments and boutique shops, galleries, bars, cinemas, and gardens. The apartments' living spaces are designed for entertaining in style; bedrooms for comfort; bathrooms for relaxing. Finishes are neutral, but rich. Mirrored surfaces, marble bench tops, timber floors and warm paint colours are added with Schiavello's quality touch and create the perfect backdrop for an inner city lifestyle.

"Superb workmanship, attention to detail and professionalism were the things Schiavello brought to this project," says Caroline Lieu, Project Designer, HASSELL. "A dialogue was set up early between Schiavello and the design team to ensure any issues on site were dealt with quickly and efficiently. This in turn resulted in a high quality product, one of the key drivers of the brief."

The former Herald and Weekly Times building is one of the few Beaux Arts buildings in Melbourne, with a façade that is heritage listed. The redevelopment has revealed and restored many of the original elements, meshing the old with the new. Existing columns and beams have been retained, and all new elements are inserted into the historic façade. Internal partitions and joinery elements stop short of touching the existing fabric and are clearly articulated as individual insertions. The careful placement of these new elements create smaller spaces within the larger volume.

Ceiling heights vary from 3.3 metres to 4.7 metres, allowing for large and naturally lit living spaces to be located around the building's perimeter. No two apartments are alike, each vary in size and dimension. Ceiling heights in private and circulation spaces, such as bedrooms, bathrooms and hallways, are condensed in order to emphasise the impressive proportions of the living spaces.



1\_ The former Herald and Weekly Times building is one of the few Beaux Arts buildings in Melbourne, with a façade that is heritage listed.

2\_ Two level apartment with mezzanine floor.

3\_ Bedroom setting with mirrored wall separating the ensuite.

## info panel

HERALD LIVING APARTMENTS  
FITOUT

**Project Location**  
46-72 Flinders Street  
Melbourne

Externally, the building displays an intricately detailed façade, but internally there is little or no original ornate detailing. It was proposed therefore to add the detail in the form of custom-designed joinery pieces, manufactured by Schiavello's Architectural Joinery team and designed by HASSELL.

**Client**  
Australian Super  
Developments Pty Ltd:  
Kevin Fitzpatrick  
Fiona Dunster  
Chris Kakoufas

These take the form of handles, towel rails, light fittings, and one-off items of furniture including MDF powder-coated finishes to joinery units, thereby giving prospective buyers something that is unique and reinforces the special qualities of the building.

**Design**  
HASSELL Ltd:  
Robert Backhouse  
Caroline Lieu  
Michael Hrysonallis  
Wayne Morrell  
Juli Smolcic  
Byron George  
Robin Archer  
Lorenzo Marianni  
Anthony Dickens

“One thing that is apparent from the way Schiavello has approached this project was they really tried to maintain ‘Schiavello quality’,” comments Chris Kakoufas, Development Manager at ASD. “They have consistently worked to produce a product that they can be very proud of and that they know the purchasers will appreciate.”

**Schiavello Vic Fitout**  
Daron Johnson  
Carmelo Rositano  
Andrew Belurov

**Schiavello [Prima  
Architectural]**  
Peter Klaaysen  
John Woods  
Darren Callander

**Area**  
6500 m<sup>2</sup>

**Furniture Accessories**  
Dedecce, Euroluce,  
Australian Art  
Resources, Hub  
Furniture Lighting  
Living, Sutton Gallery



4\_A space for living in one of the premier apartments in the building, designed for entertaining in style.

5\_Dining area or optional study.

6\_Kitchen features with integrated equipment and generous island bench.

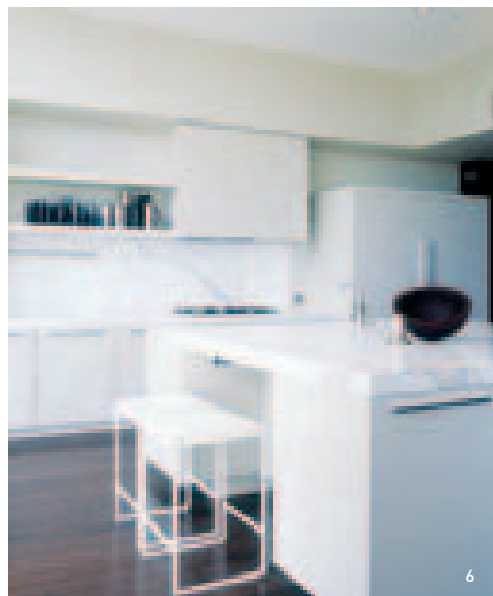
7\_Elegant bathroom for relaxing. Mirrored partition forms the backdrop of a refined joinery piece and concealed toilet and shower.



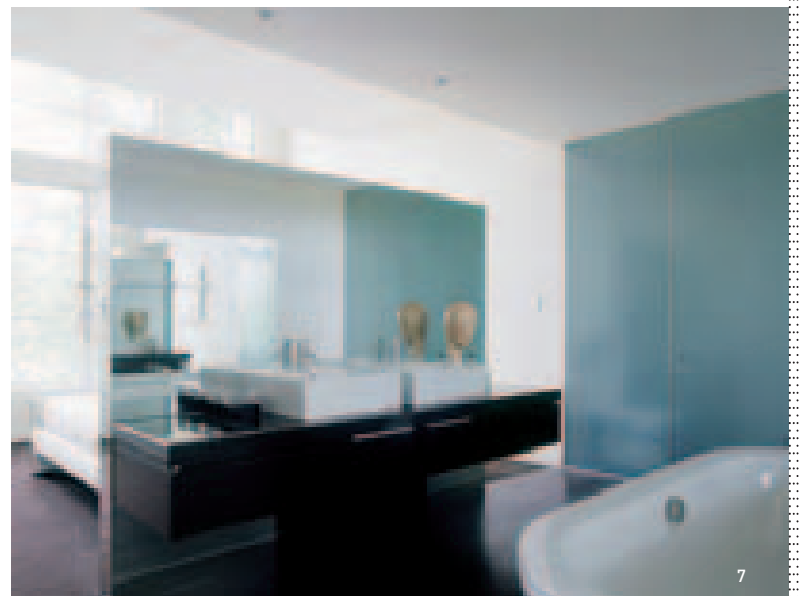
4



5



6



7