

# Find Your Focus:



Phone Room



Work Room



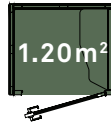
Duo Work Room



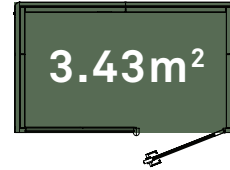
Meeting Room

## Footprint & Specifications

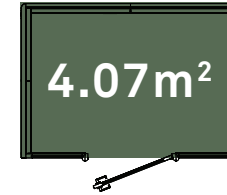
1200 W x 1000 D x 2550mm H  
47.2 x 39.3 x 100.3"



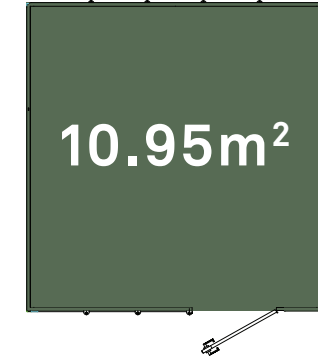
2400 W x 1430 D x 2550mm H  
94.5 x 56.2 x 100.3"



2400 W x 1695 D x 2550mm H  
94.5 x 66.7 x 100.3"



3250 W x 3370 D x 2550mm H  
127.9 x 132.6 x 100.3"



## Primary use

Phone call standing for < 30mins



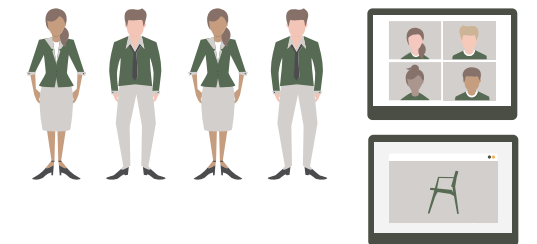
Single meeting for 30mins+ with video conferencing



Two person meeting with video conferencing



Meeting with more than two people with screen sharing/video conferencing



## Occasional use

Single meeting for < 30mins with video conferencing



Focused work (non-collaborative)



Two person collaboration



Meeting with more than two people

