

## 2007 issue

- 10 Maddocks
- 14 BHP Billiton Mitsubishi Alliance
- 18 Telstra Innovation Centre
- 22 Macquarie Goodman
- 24 Urban Workshop
- 26 Blake Dawson Waldron
- 28 Insurance Australia Group
- 30 Rio Tinto
- 34 KPMG
- 36 Southern Cross
- 42 Monash University
- 44 Palace Cinema

# DETAILS 25

- 46 Curve Bar
- 48 Nagashima Ohno & Tsunematsu
- 50 AustralianSuper
- 52 Worley Parsons
- 54 Zero Waste SA
- 56 Ritchies-IGA
- 60 Coca-Cola Amatil
- 62 Alinta
- 64 Gresham Partners
- 66 Retail Feature
- 72 Schiavello Update

## INTRODUCTION

With the celebrations of our 40th year coinciding with this 25th edition of Details, we reflect with a tribute to our past that has brought us to this exciting point in the Schiavello story. From what was once a small family business, to an established family of integrated companies, Schiavello's commitment to quality in workmanship and service is underscored by our corporate head quarters and extensive manufacturing and assembly facility in Australia. From the 1960's with its enclosed workspaces, towards the open, transparent environments of today, we continue to embrace innovative thinking, and support our clients in the pursuit of their performance and productivity endeavors.

With a world economy in an unprecedented period of economic growth, an information and communications boom, mass consumerism and a re-emergence in social responsibility, there are many influences on the general business landscape. More than ever before, it is critical that organisations are inventive, resourceful, responsive and adaptive to the changing landscape of their evolving markets.

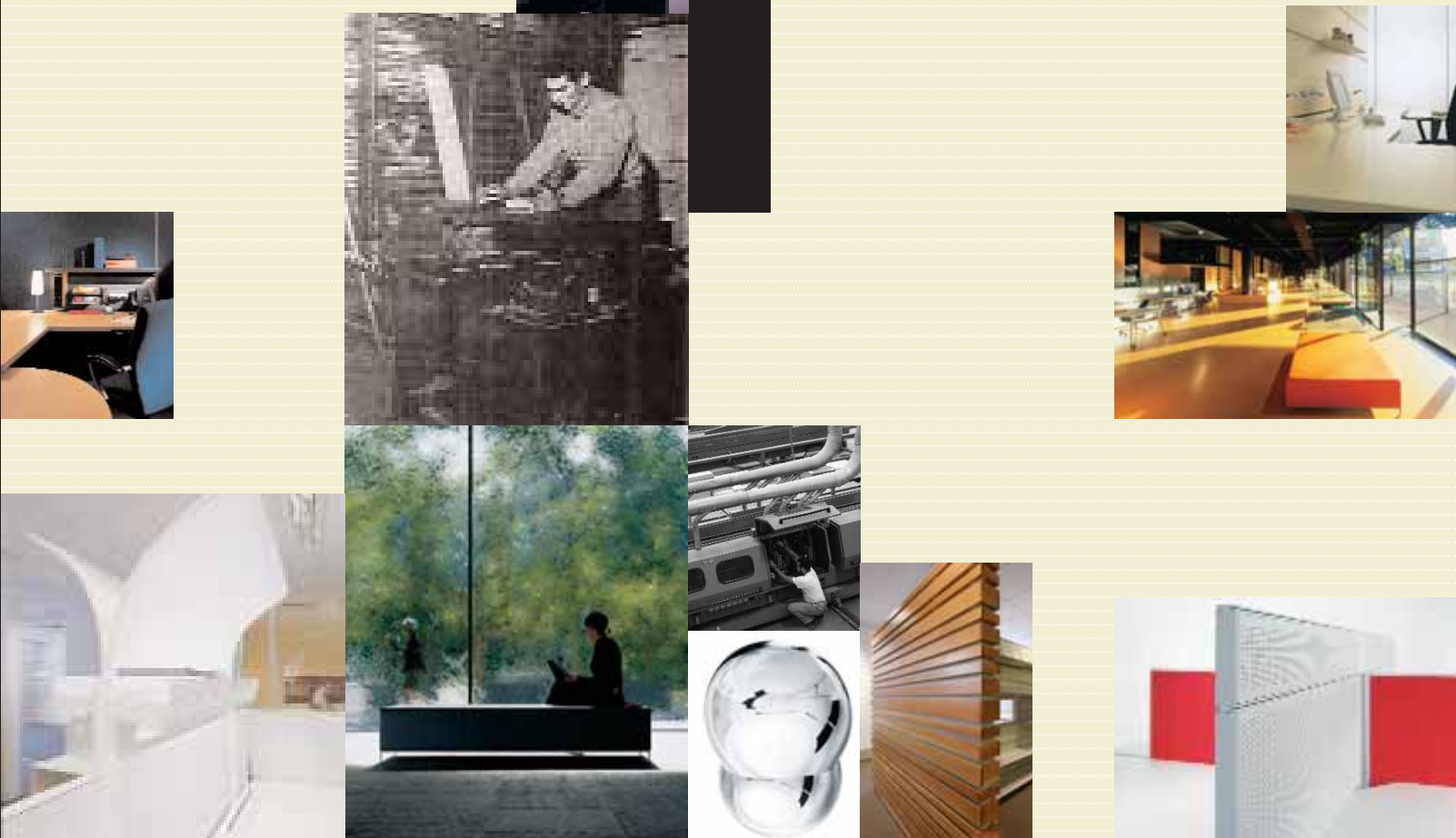
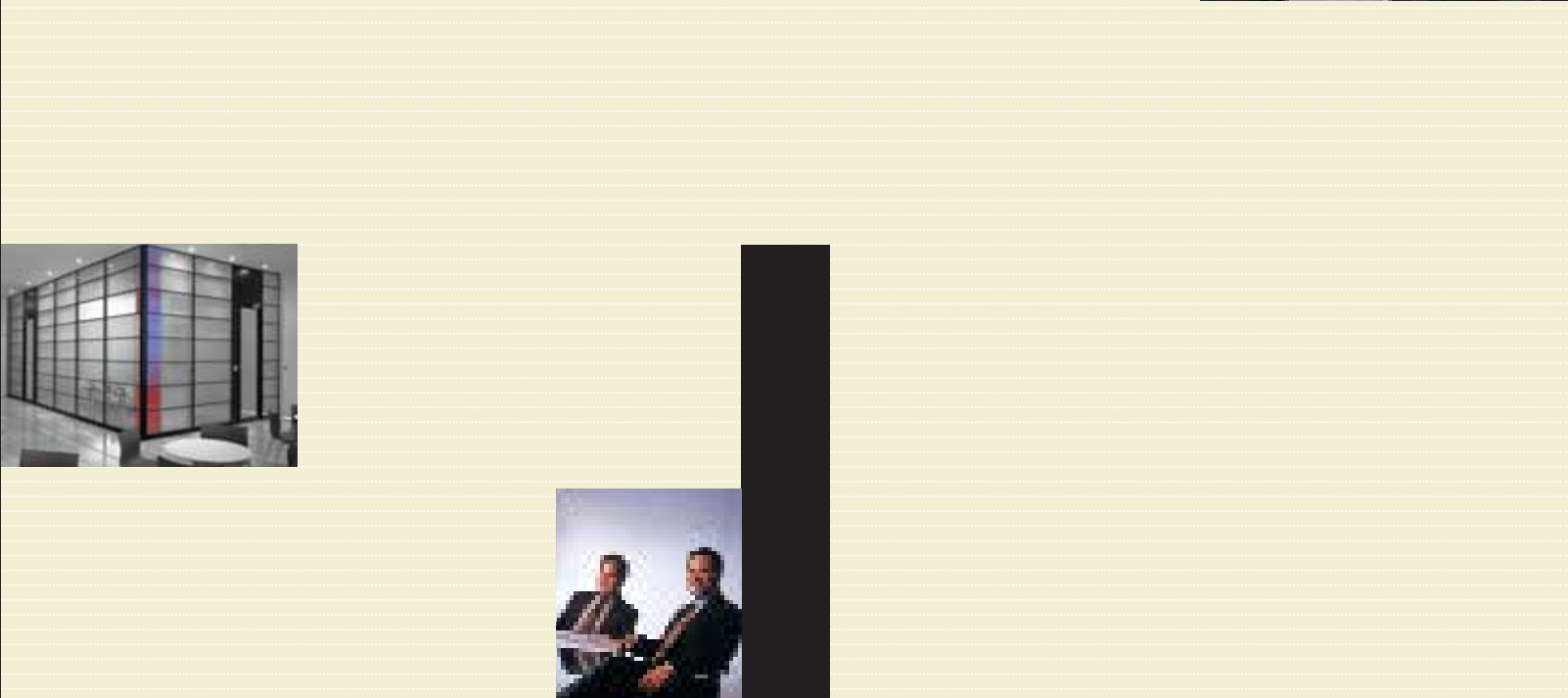
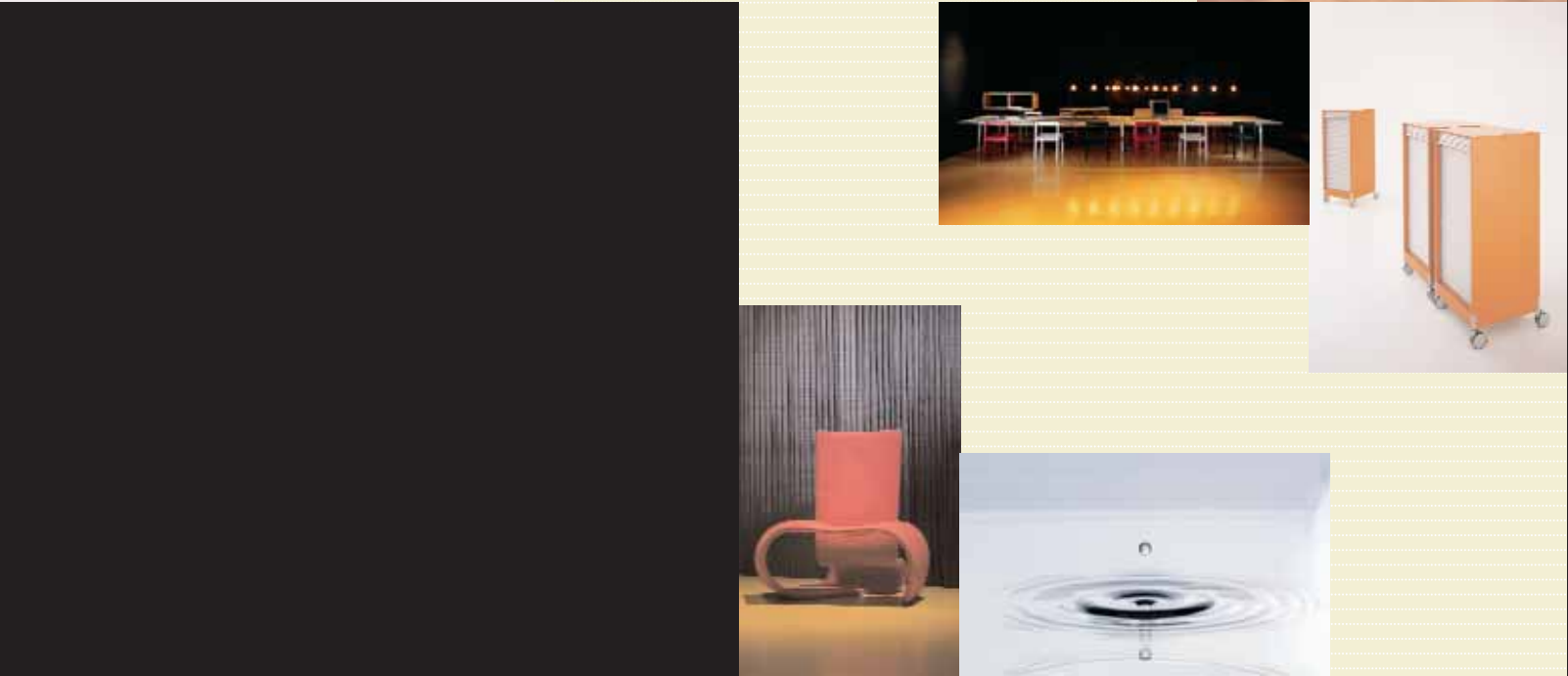
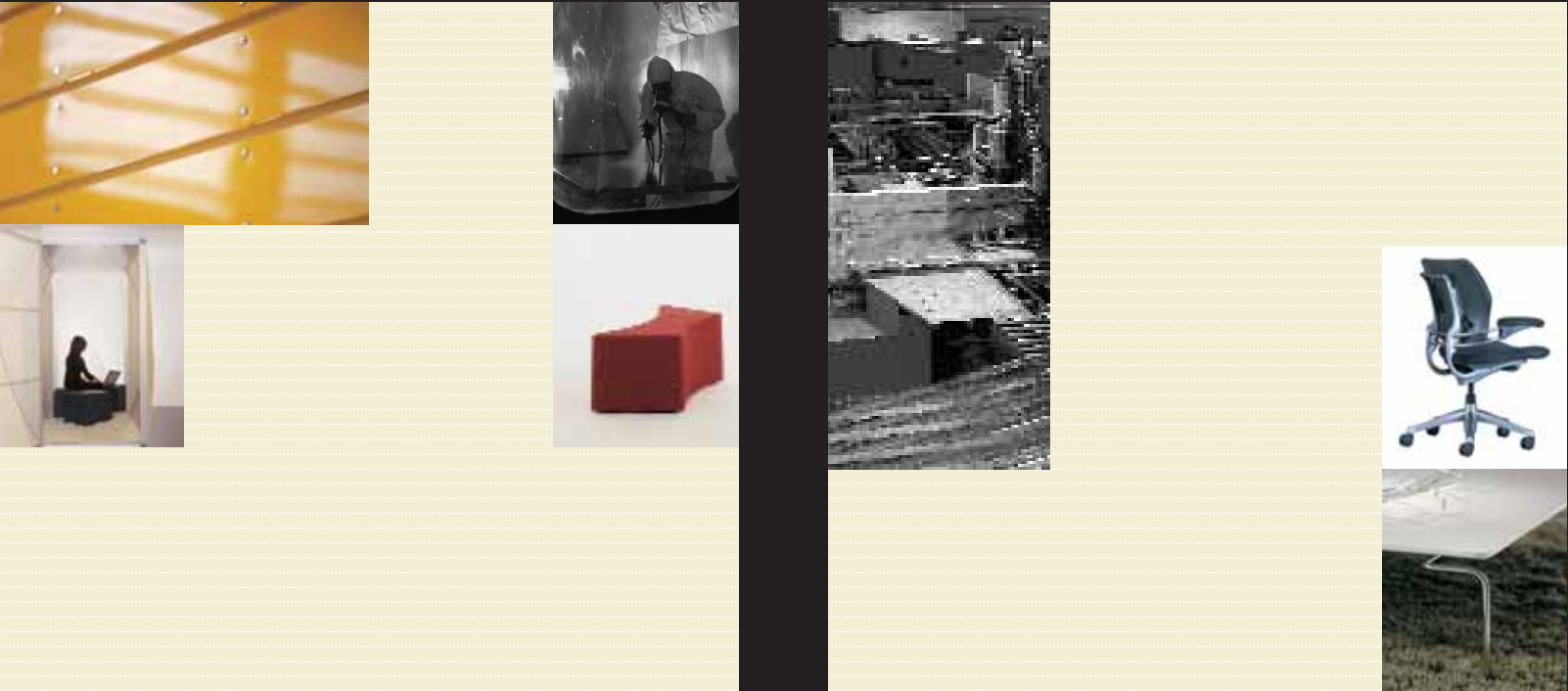
What does it take for continued success in the current business climate? Is your culture attracting and inspiring capable, motivated, progressive people, each with the passion and commitment to deliver a genuine contribution? Do we recognise and understand the physical and psychological diversity of people within our workplace? How can the workplace help?

These are questions that we consider, research and discuss every day. With a keen interest in understanding what role the workplace has in attracting and retaining the best people and fostering high performance and productivity - we seek to gain a greater understanding of diversity and workplace psychology. And of course, underpinning all of this, we consider how to work with the least impact on our environment. To this end we look forward to sharing our thoughts with you, and ultimately sharing the products and environments that evolve from this process.

For the countless members of the design community, clients, suppliers and Schiavello staff that have contributed to the past four decades, our sincere thanks for your valued support, it is a pleasure working together. I trust you will join me in appreciating this 25th issue of Details and the fine examples of best practice projects within.

Peter Schiavello

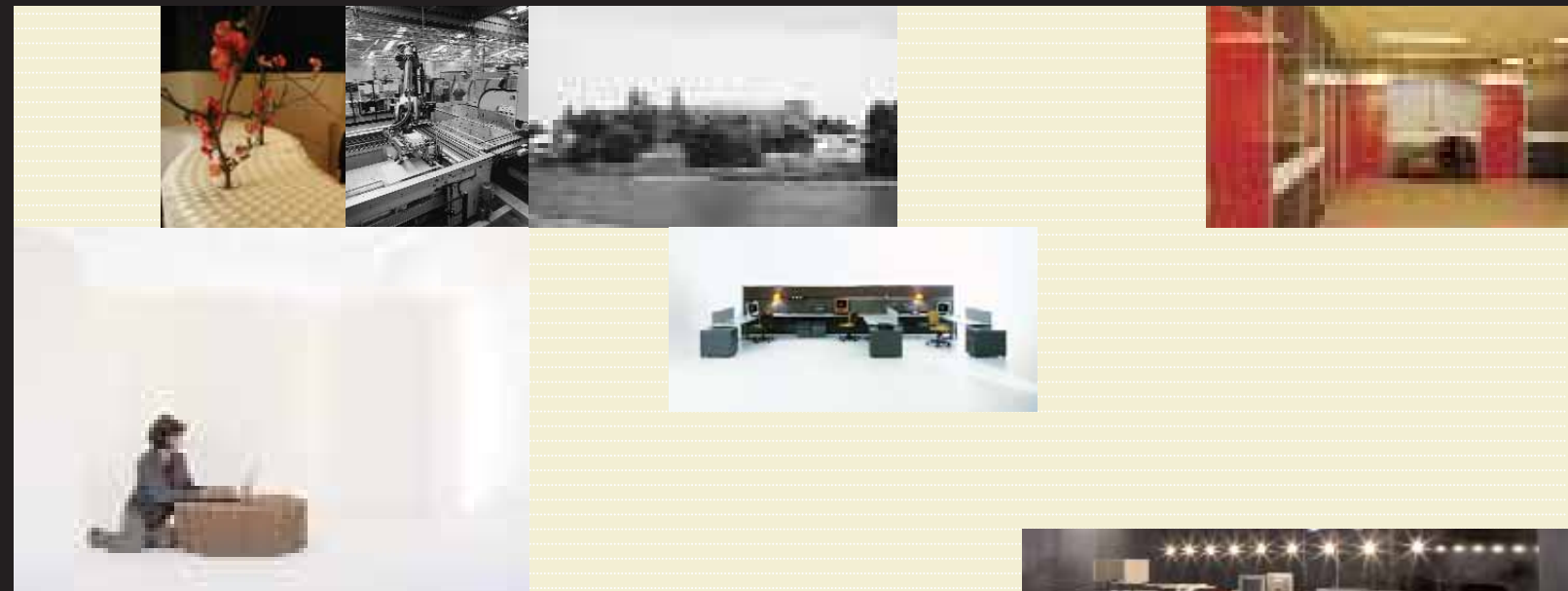
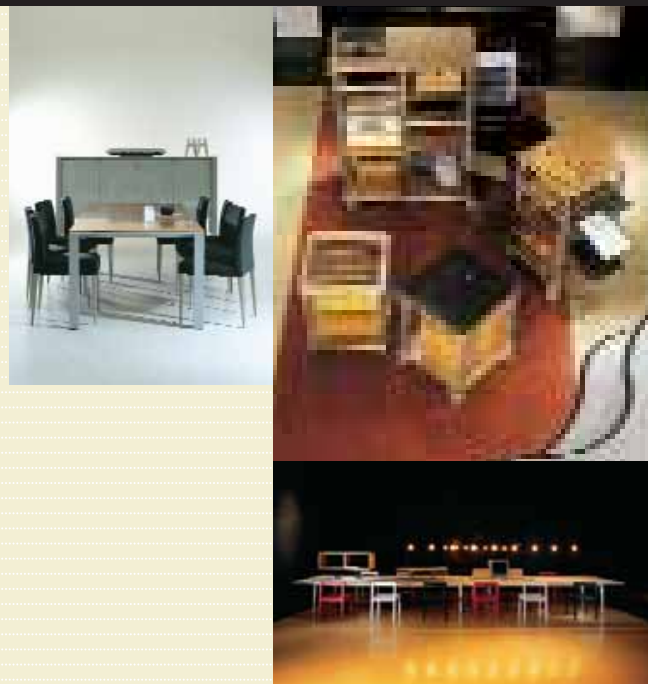




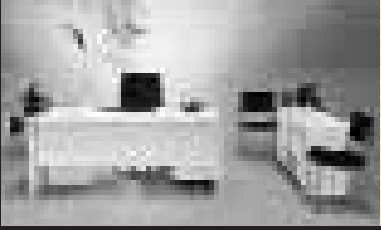
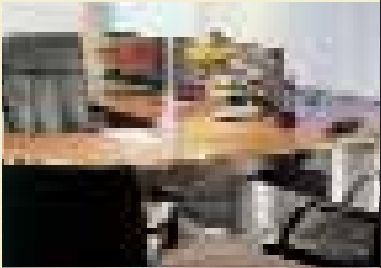












Director:  
Peter Schiavello

Design:  
emerystudio – Garry Emery,  
and Tim Murphy  
Schiavello – Mary Molinaro

Writer:  
Jessica Fairclough

Subscription:  
To subscribe to Details, visit  
the Schiavello website at  
[www.schiavello.com/details](http://www.schiavello.com/details)

View Details on-line  
[www.schiavello.com/details](http://www.schiavello.com/details)

Details is published by Schiavello Group Pty Ltd (ABN 13 004 745 608). Every effort has been made to ensure the information in this issue of Details 2007 is accurate at the time of printing. Schiavello Group Pty Ltd accepts no responsibility for errors of fact, image, illustration, specification, price or any reliance upon this publication. Schiavello Group Pty Ltd reserves the right to change any or all details without prior notice. No part of this publication may be reproduced in any manner or form without permission. Please contact the Deputy Managing Director at Schiavello Group Pty Ltd for permission to reproduce in whole or in part.



**Project Location**  
Levels 20-23 + 32-33  
Riparian Plaza  
71 Eagle Street  
Brisbane

**Client**  
BHP Billiton  
Mitsubishi Alliance:  
Noel Leach

**Design**  
Geyer Pty Ltd:  
Peter Geyer  
Amanda Wood  
John Dunn  
Emma Coulter  
Allan Griffiths  
Ray Yuen

**Project Management**  
RCP:  
Greg Atkinson  
John Lorriman

**Schiavello Qld Fitout**  
Phillip Ross  
Dave Allenby  
Vince Alberry  
Kate Nixon

**Area**  
7000 m²

**Products**  
i.box glazed partition  
system.



**BHP BILLITON MITSUBISHI  
ALLIANCE FITOUT**

‘We’ve created an environment responsive to BMA’s needs; making it a place that BMA and their employees want to come to work in’ (John Dunn, Senior Designer, Geyer).

# WORKPLACE CULTURAL REVOLUTION

BHP Billiton Mitsubishi Alliance (BMA) is Australia’s largest coal miner and exporter. With eight coal mines, a port in Central Queensland and headquarters in Brisbane, it was logistically necessary to create an office environment facilitating teamwork, and connecting the company across all divisions and locations. Working together with Schiavello’s Qld Fitout team to achieve these goals were interior designers Geyer and project managers RCP.

\_Rural meets urban in the design, with the flawless intersection of rustic colour schemes and indigenous-like sculptures and art instalments. Ultra modern bold furniture, light fittings and textured walls also feature. Integration of oversize photographic statements on each floor represents BMA’s cultural values: community, industry, wellbeing, environment and safety. These also draw reference to mine sites — a reminder of the grass roots level of operations.

\_Schiavello’s i.box was the glazed partition system of choice for meeting rooms, with its elegant, minimalist style. The system was enhanced with striking frosted graphics applied to the glass to increase privacy and visual interest. The versatility of i.box is proven through its personalisation capabilities and creation of a statement, while complementing the remainder of the interior.

Its transparency and aluminium frame are well suited to the design brief of an open, light-filled environment. \_A six-floor fitout accommodating 350 people provided a challenge to simultaneously please all employees. Workshops were developed with staff members to input ideas and opinions toward the design. The Geyer design team was keen to ‘reinforce BMA’s culture of “best in class” and “employer of choice”, facilitating team work and enabling communication with an elastic environment, and seamless integration of technology.’ Sophisticated audio visual technology connects employees, visitors and remote workers; and plasma screens are integrated within the design of reception and the ‘clubs’ on each level. BMA’s team environment required the embodiment of an open office, shifting the prior culture of 80 per cent offices to 80 per cent open workstations. This openness has also allowed for the sharing of natural light, and from a working standpoint, allows the flow of communications; enhancing the collaborative approach desirable in this interactive environment. The outcome is a tasteful and timeless high-end result and a considerable benchmark for future office fitouts.



BHP BILLITON MITSUBISHI  
ALLIANCE FITOUT

**Project Location**  
Levels 20-23 + 32-33  
Riparian Plaza  
71 Eagle Street  
Brisbane

**Client**  
BHP Billiton  
Mitsubishi Alliance:  
Noel Leach

1\_Client waiting area facing  
reception featuring i.box glazed  
partition system.  
2\_Circular meeting room and 'club'  
area client floor.  
3\_'Club' area with kitchen, breakout  
spaces and audio-visual technology.  
4\_Meeting room employing i.box  
glass frontals with applied graphic.

**Design**  
Geyer Pty Ltd:  
Peter Geyer  
Amanda Wood  
John Dunn  
Emma Coulter  
Allan Griffiths  
Ray Yuen

**Project Management**  
RCP:  
Greg Atkinson  
John Lorriman

**Schiavello Qld Fitout**  
Phillip Ross  
Dave Allenby  
Vince Alberry  
Kate Nixon

**Area**  
7000 m²

**Products**  
i.box glazed partition  
system.



2



3



4



TELSTRA INNOVATION CENTRE  
SYSTEMS + JOINERY

Project Location  
Level 2  
1010 La Trobe Street  
Docklands  
Melbourne

Client  
Telstra:  
Vito Chiodo

Design  
Geyer Pty Ltd:  
Peter Geyer  
Matt Sheargold  
Amanda Wood  
Amanda Wright  
Alexandra Coleman  
Hoa Huang

Project Management  
Bovis Lend Lease:  
Bruce Hunt

Schiavello Prima  
Architectural  
Robert Scriva

Schiavello Vic Systems  
Raffaele Tigani  
Vincent Tigani  
Stuart Etheridge  
Kristian Missen  
Lidiya Dimkovski

Area  
1204 m²

Products  
QED work environment.

Melbourne’s Telstra Innovation Centre is a world class facility, showcasing the possibilities of technology in everyday life.

DE-MYSTIFYING  
TECHNOLOGY

Telstra has opened up a new world of smart technology with the introduction of its Innovation Centres, established to accelerate the development of new and emerging technology solutions. The Innovation Centres in Sydney and Melbourne provide an interactive environment and demonstrate how Telstra technology can be applied as part of people’s everyday lives helping them stay more connected and ultimately make life easier. \_For Telstra, specific objectives that needed to be translated in the fitout included market recognition, ‘innovation’ leadership, partnering with customers and encouraging existing and potential partners to reinforce/build relationships, reinforce people’s perceptions of the Telstra brand and encourage them to view Telstra as being innovative, fresh and surprising. The centres also needed to ‘de-mystify’ technology, highlighting how it can be easily integrated into people’s lives for clear benefit and contribute to a culture of innovation. \_The challenge for Geyer’s design team was to create an environment which communicated Telstra’s commitment to technology and to do this in a way which engaged people, making it easy for them to understand and feel at ease with the technology. \_According to Alexandra Coleman of Geyer, the design response is based upon a series of modules or ‘pods’. Each represents a different setting relevant to aspects of consumers’ lives. \_The range of settings encompasses all aspects of life: education, health, logistics, mobility, office and home,

with various pods such as a kitchen, stage, a small business office area, a delivery van and a boardroom. \_Customers are escorted on a tour of the pods, where various hand held devices are used to interact with the technology story as it unfolds. Audio visual presentations assist in building a narrative as people move through the centre. The centre continually evolves to feature the latest technology and to keep clients up to date with new initiatives as they come to market. \_According to Bruce Hunt of Bovis Lend Lease (BLL), project managers for the Melbourne Centre, the joinery by Schiavello was a critical item and in order to resolve the budget and time restraints several workshops were held with Schiavello and BLL where all stakeholders’ requirements were addressed. Schiavello were involved in the backlit opal acrylic Perspex reception desk, Perspex-raised floor, bench unit in the kitchen pod and the ‘learning centre’ which features Schiavello’s QED work environment. \_‘The design intent was to showcase the technology by keeping the settings as minimalist as possible, rather than realistic,’ explains Coleman. ‘Elements have been simplified, with the minimum number of pieces used to build the setting.’ Lighting and audiovisual intelligently enhances the illusion. Apart from more readily accommodating change, this approach also engages the customer, who may project their reality into the setting, and imagine the possibilities.





TELSTRA INNOVATION CENTRE  
SYSTEMS + JOINERY

Project Location  
Level 2  
1010 La Trobe Street  
Docklands  
Melbourne

Client  
Telstra:  
Vito Chiodo

Design  
Geyer Pty Ltd:  
Peter Geyer  
Matt Sheargold  
Amanda Wood  
Amanda Wright  
Alexandra Coleman  
Hoa Huang

Project Management  
Bovis Lend Lease:  
Bruce Hunt

Schiavello Prima  
Architectural  
Robert Scriva

Schiavello Vic Systems  
Raffaele Tigani  
Vincent Tigani  
Stuart Etheridge  
Kristian Missen  
Lidiya Dimkovski

Area  
1204 m²

Products  
QED work environment.



2

1\_ Customers are escorted on a tour of a series the pods (representing different settings), where various hand held devices are used to interact with the technology story as it unfolds.  
2\_QED work environment on a back-lit Perspex raised floor adds a high-tech feel to the 'learning centre'.  
3\_Reception area with back-lit reception counter in opal acrylic Perspex supported by a metal frame.  
4\_Triangular meeting table with horizon white tabletop.



3



4



**Project Location**  
Level 20  
600 Bourke Street  
Melbourne

1\_ Meeting room adjoining waiting area with timber and glazed screens for warmth and transparency.  
2\_ Understated elegance emanates from the reception area.

**Client**  
Macquarie Goodman:  
Michael Sutherland

**Design**  
whodesign:  
Greg Openshaw

**Schiavello**  
Project Solutions  
Peter Thompson  
Tim Grant

Area  
800 m<sup>2</sup>



**MACQUARIE GOODMAN**  
PROJECT SOLUTIONS

# A SOLID INVESTMENT PAYS DIVIDENDS

The enticing red carpet beckons at Macquarie Goodman’s Victorian headquarters, designed by **whodesign**. Its dynamic, modern feel echoes the professionalism and progressiveness for which the organisation is renowned. The success of the company resonates in the polished understatement of fixtures and furniture. With the warm glow and silky reflection of light, glass and timber throughout, a spacious and welcoming experience is created.

\_The publicly listed integrated property group (operating in Australia, New Zealand, Asia, Europe and the UK) experienced substantial growth in recent years and had inevitably outgrown their premises. Schiavello’s Project Solutions team (SPS) was responsible for the complete refit of what was previously a vacant floor.

\_SPS provides independent project coordination services, thinking strategically to ensure projects are completed on time and within budget. They offer an integrated solution to seamlessly facilitate change whilst maintaining quality and value across all project types. With an especially short time frame and the negotiation of tender, this project’s challenges were all adeptly overcome by SPS. Undertaking more extensive coordination of client-specific factors than usually expected from a contractor, SPS were pleased to be involved in a great variety of tasks.

**whodesign**’s Greg Openshaw comments on SPS: ‘Schiavello’s undertaking of the head contractor role has been fundamental to a smooth process of coordinated implementation. With construction, building services and specialist joinery controlled unilaterally, the project outcomes were achieved within tight timeline and budgetary controls, without impacting on our high expectation for a quality finish.’

\_A crucial element of the design brief was to clearly define two key areas: front and back of house. The need to emanate a professional image and to provide a place to conduct confidential client meetings was paramount; as was creating an open and team orientated atmosphere for staff.

\_The open plan office and breakout areas allow for the interactive freedom for staff to communicate amongst and between project disciplines. Greg Openshaw discusses the use of ‘simple modularisation that provides continuous support free workspace suiting operational needs’.

The ‘dynamic work style’ and ‘rigour of relationships management and strategic positioning of project development’ resulted in and is supported by the flexibility of the design.

\_The impressive welcoming spaces such as the reception and waiting area, central to client meeting rooms, are client-focused.

The open communication style with which Macquarie Goodman is renowned is emulated through the ‘timber and glass panels that frame the spaces and maintain a visual connection with the light and outlook beyond’ (Greg Openshaw).

\_The balance of openness and transparency for staff, with a client-centric environment has been achieved, maintaining integrity for Macquarie Goodman’s corporate image, their employees and their working ethos.





**Project Location**  
**Ground Floor**  
**50 Lonsdale Street**  
**Melbourne**

1\_Urban Workshop's public meeting area with the fusion of various messmate timber units forming tables, benches and seats.  
2\_A ground floor lift lobby with timber panelling.  
3\_Upper-storey lift lobby continues the Urban Workshop design theme throughout all floors of the tenancy.  
4\_An imposing sight: Urban Workshop's thoroughfare linking public areas, retail shops and workplaces above.

**Client**  
**Multiplex**  
**Constructions**

**Design**  
**WBNH:**  
**John Wardle Architects**  
**HASELL**  
**NH Architecture**

**Schiavello Vic Fitout**  
**Richard Halasa**  
**Matthew De Carolis**  
**Andrew Howard**  
**Darryn Lafranchi**

**Schiavello Prima**  
**Architectural**  
**Robert Pegoraro**  
**Ronald Klaaysen**

**Area**  
**5700 m<sup>2</sup>**



**URBAN WORKSHOP**  
**50 LONSDALE ST – GROUND FLOOR**  
**FITOUT + JOINERY**

Urban Workshop is the striking new feature piece adorning the patchwork of Melbourne.

# BEYOND THE METROPOLIS

An outstanding demonstration of a commercial high-rise lobby, Urban Workshop's ground floor is breath-taking in its scope, scale and visual appeal, with the finer details also sure to impress. The design team (WBNH: a joint venture between John Wardle Architects, HASELL and NH Architecture) has celebrated many and varied accolades at the Royal Australian Institute of Architecture 2006 Victorian awards. Urban Workshop's awards include commercial architecture, interior architecture, urban design and a shared prize for making a significant contribution to the Melbourne CBD. Skillfully linking several buildings with arcades and internal laneways, Urban Workshop is the fusion of tenancies resulting in a miniature urbanism. With its adulation of the metropolis' community, all are welcome to partake in their daily rituals of eating and socialising within the shared, open plaza space. It is a complete departure from anything conservative or expected of an office tower, with the distinctions between the street and the interior blurred. Contrasting the warmth of timber finishes with cool, crisp modernity, there is connection between the old and the new; of particular importance considering the heritage of existing buildings used in the tenancy. Glass display cases house remnants salvaged in the excavation of the site as a connection with the site's history.

The bustling heart of the city is drawn into the space and emulated throughout with the city skyline-like structures, repeated diversely on all planes (referenced on a smaller scale in the AustralianSuper offices, levels 32 and 33, see page 50). Exposure of above floors' activities and overhead walkways assist in the illusion of a 'city within a city'. Adding this prestigious project to their list of accomplishments, Schiavello's Victorian Fitout team was selected for their expertise in first-class interior commercial environments. Undertaking the meticulous joinery of prominent public eating areas (Schiavello's Prima Architectural), along with the 'city-skyline' structural features, timber messmate security and main reception counters, Schiavello's capabilities produced a top-quality result. Connection of all floors was important in the design, with each level's lift lobby repeating the design theme of the ground floor. Schiavello also undertook the joinery and fitout of these areas on all 33 levels with their stylised timber finishes. Setting the scene for a tower of tenancies including private companies and 27 floors of Victorian Government departments (Dept Human Services and Sustainability Victoria), an inspired introduction to these progressive work environments is made. Lingering at the brink before entering another corporate space, Urban Workshop is the ideal transition between the energetic city of Melbourne and the professional realm within.



**Project Location**  
Levels 36, 39, 40  
Riverside Building  
Eagle Street  
Brisbane

Levels 30-32  
Exchange Plaza  
2 Esplanade  
Perth

**Client**  
Blake Dawson  
Waldron:  
(Brisbane)  
Graeme Klatt  
(Perth)  
Noellene Cresswell

**Design**  
E.G.O. Group

**Schiavello Qld Systems**  
George Koklas

**Schiavello WA Systems**  
Clayton Bristow

**Area**  
3000/3300 m²

**Products**  
Elitone desking,  
Ultimet partitions,  
System 45 screens,  
Systemet storage  
pedestals, Interpower  
softwiring umbilical  
technology.



1\_ Enclosed office with curved adjustable Elitone desking system and Systemet pedestals.  
2\_ Elitone desking and accessories, Systemet storage pedestals, Ultimet panels with System 45 acid-etched suspended glass screens + customised shelving.



**BLAKE DAWSON WALDRON  
SYSTEMS**

Australian Law Firm of the Year  
(Chambers Global – the world's  
leading law firm directory),  
Blake Dawson Waldron is  
celebrating its accolades,  
along with its impressive  
new headquarters in Brisbane  
and Perth.

**CROSS-  
COUNTRY  
COALITION**

Designed by E.G.O. Group, Blake Dawson Waldron's (BDW) developments arose out of a necessity to align environments across all offices, as well as what Graeme Klatt, Commercial Manager BDW describes as, 'the previous offices' fitouts being of an inconsistent standard'. George Koklas from Schiavello Qld Systems elaborates: 'The project ran simultaneously in the two states. The designer, design direction and products were the same, but each had to be customised to suit the different premises. WA staff and I also met with Melbourne representatives to nut out the finer details of the screen system used.' The customisation and flexibility of products is an aspect of Schiavello's capabilities with which they are renowned, happily accommodating clients and designers with customised outcomes across geographic borders. \_Based principally on the Blake Dawson Waldron Sydney office, E.G.O. created spaces with ample shared, open workstations. They ensured any meeting rooms designed for privacy were fenestrated by glass to maintain transparency between colleagues, and to allow access to the city views and ample natural light. The unusually-shaped floor plate in the Perth office meant adaptability was a large requirement of the design; inherent from the architect's planning, to finding resourceful ways to fit systems furniture.

Choices of natural colour palettes with timber and metal finishes make for a relaxed environment and enhance the professionalism for which BDW is known. \_Elitone desking from Schiavello's range with curved features and variations between workstations and meeting rooms was chosen for practical and aesthetic purposes. Ultimet partitions with System 45 screens were a popular choice for the designer and client, with particular visual interest created from the etched glass used in the screens. Systemet pedestals provide stylish storage solutions for legal staff. With 'competitive costing and very good environmental and energy efficiencies', Graeme Klatt was pleased with Schiavello's products and services. \_A project spanning between Perth and Brisbane, with a Sydney-based architect and input from Melbourne, proved an interesting challenge. The success of the projects is clear, made possible through the teamwork between states, mutual support and cooperation.



**Project Location**  
Levels 2-3 + 6-8  
70 Flinders Street  
Adelaide

**Client**  
Insurance  
Australia Group:  
Colin Jennings  
Don Fairweather

1\_System 45 power blades using colour-backed glass, height-adjustable QED workstations with powder coat MDF work tops, QED pedestals, Systemet storage.  
2\_QED style fabric-covered privacy screens with System 45 panels and QED desking.  
3\_Open work area with QED workstations, Systemet storage and custom graphic dividing panels.

**Design**  
Woods Bagot:  
Catherine Winwood  
Lisa Lee  
Craig Rogers  
Nick Bendys

**Schiavello SA Systems**  
Rob Whittaker  
Natalia Fuss

**Area**  
8061 m²

**Products**  
QED Desking,  
QED custom-made  
privacy screens,  
System 45 panels,  
Systemet storage,  
Interpower softwiring,  
Humanscale monitor  
arms.



INSURANCE AUSTRALIA GROUP  
SYSTEMS

# BREATH OF FRESH AIR

The refreshing ambience of Insurance Australia Group's (IAG) Adelaide headquarters was neither an accident nor a coincidence. The atmosphere is attributed to chic, clean design, prioritising green principles and floods of natural light.

\_Woods Bagot's Catherine Winwood (Senior Associate Interior Design) responded to the brief to also consolidate the accommodation for SGIC and CGU (two of IAG's brands) by 'establishing a design "story" or "theme" to underpin the design for the company's new direction.'

A representative from each business unit formed a project committee of approximately 20 people, who offered input throughout each stage of the design process. This gave staff control over their surroundings and helped to foster relationships between departments.

\_With particularly expansive floorplates, the area was broken down to 'humanise' the space, by introducing a 'Neighbourhood' concept. Woods Bagot incorporated this theme, as well as recognising Adelaide city's regular grid plan with areas of parks at strategic points. The striking foliage of 'Mother-in-law's Tongue' plants offer filtered privacy and invigoration, and draw reference to green concepts. Natural light was maximised with the open plan workstations placed around the building's perimeter while confining enclosed offices to the interior. Schiavello's System 45 screens were enhanced to create bright translucent glass partitions providing bold colour statements for aesthetic interest, and to loosely divide the space.

The sustainability extended to packaging and recycling of products during the construction process. Schiavello's SA Systems Furniture team worked together with the designer and project manager to provide sustainable products, and to fulfil the green requirements throughout the project's duration. IAG wanted to create an office space to conserve energy and water, offer an improved indoor working environment and control greenhouse gas emissions, as part of the company's commitment to become carbon neutral by 2012. It was the first South Australian building given a prestigious five star rating for design by the Green Building Council of Australia.

\_Other products supplied by the Schiavello team include modern choices of QED desking and Systemet storage. With an Interpower softwiring umbilical reticulation system, custom-made monitor arms and mobile pedestals, the best fit aesthetically was achieved for the client's brief. For Green Star compliance, Schiavello's sustainable products were the clear choice. Powder coat MDF technology along with recycled content in the screens reduces churn and toxic emissions markedly. Catherine Winwood comments on Schiavello's performance: 'Schiavello was the most cost effective and Green Star compliant supplier of systems furniture from five tenderers. Local representatives and site attendance throughout the whole project was fantastic.'



RIO TINTO FITOUT

Project Location  
Levels 31-35  
120 Collins Street  
Melbourne

Client

Rio Tinto:  
Neil Brazier

Design

Geyer Pty Ltd:  
John Lenagan  
Samantha Shiel  
Alexandra Coleman  
Amanda Wood  
Shane Wintershoven

Schiavello Vic Fitout

Richard Halasa  
Matthew De Carolis  
Jason Kotis  
Kyle Jensen  
Dave Hutchinson

Area

5683.5 m<sup>2</sup>

# DIGGING DEEP

Global mining group Rio Tinto has interests all around the world. Of particular interest recently, however was Rio Tinto Australia’s move into new headquarters. A publicly listed company with a prestigious and time-honoured tradition, Rio Tinto’s continued growth and the requirement for a more flexible and responsive work space meant new premises was the next inevitable development.

\_The negotiated increase to a 50 per cent open working environment was deemed appropriate, due to a combination of the confidential nature of work, client meeting requirements and the importance of enhancing openness in line with Rio Tinto’s values. The design team from Geyer undertook interviews with all department heads, gathering information to devise a plan that would suit everybody’s needs, now and into the future.

\_Geyer’s design incorporated the aim to ‘foster more interaction within the business and help change the way Rio Tinto’s teams worked, which was aligned with contemporary and best practice principles’ (John Lenagan, Geyer). The increased open workstation areas was one element of this, as was the introduction of an internal staircase, designed to encourage visual interaction between staff. This ‘brings together all departments on different floors in a more connecting fashion’ (Neil Brazier, Rio Tinto). The unique design of the staircase with solid oak stair and striking ‘Marblo’ vertical feature mimics strata mineral layers – a link to Rio Tinto’s mining operations.

Breakout areas and libraries have also enabled an element of social interaction; simultaneously supporting the remote workers, hot desking requirements and professional relationships. The extensive video conferencing and linked technology applied to the client meeting floor better connects the Australian headquarters with interstate and overseas Rio Tinto sites.

\_With Schiavello’s Vic Fitout team undertaking the fitout and joinery, the design evokes ‘a sense of timelessness and understated sophistication that reflects the brand attributes of Rio Tinto’ (John Lenagan). Along with the interconnecting stairwell feature, other references such as rock displays and connection to the earth with fossilised limestone in part refer to the mining aspect of Rio Tinto’s business. The Australian artwork collection, enhanced with a warm, golden palette and native materials evokes the familiar, antipodean atmosphere. Neil Brazier describes the positive outcomes of working with Schiavello, ‘Schiavello’s costs were as expected and planned, a good working relationship with the [Schiavello] project managers proved the project’s completion on time and an ability to overcome any challenges.’

\_As Neil Brazier describes, the new headquarters have greatly enhanced Rio Tinto’s workplace culture: ‘The new environment has improved work practices and communication between departments and floors’.





RIO TINTO FITOUT

Project Location  
Levels 31-35  
120 Collins Street  
Melbourne

Client  
Rio Tinto:  
Neil Brazier

Design  
Geyer Pty Ltd:  
John Lenagan  
Samantha Shiel  
Alexandra Coleman  
Amanda Wood  
Shane Wintershoven

Schiavello Vic Fitout  
Richard Halasa  
Matthew De Carolis  
Jason Kotis  
Kyle Jensen  
Dave Hutchinson

Area  
5683.5 m<sup>2</sup>



- 1\_An inviting boardroom with skyline views and integrated technology.
- 2\_Level 33 reception area with earthy tones and materials providing the distinctly Australian feel.
- 3\_Central staircase with Marblo feature and solid oak stair.
- 4\_Thoroughfare bordered by meeting rooms in glossy timber finish and earthy tones.
- 5\_Meeting room's impressive audio-visual communication technology, with storage and timber feature panelling.



**Project Location**  
Levels 6-8  
151 Pirie Street  
Adelaide

**Client**  
KPMG:  
Belinda Powell  
Peter Siebels

**Design**  
Woodhead:  
Angelo Di Marco  
Simon Dodd  
Sandra Kuchel  
Adam Hebbard  
Louise Talbot  
Annette Convery

**Schiavello SA Systems**  
Grant Digance  
Tony Sedgman  
Rick McCleave

**Area**  
3850 m²

**Products**  
i.box (custom-made floor to ceiling), QED workstations, System 45 perforated/glazed panels, powder coated MDF and metal storage, custom-made laptop and storage shelves.



1



2



3

1\_Full-height i.box used for office fronts, specially adapted to meet the client's brief.  
2+3\_QED workstations with System 45 perforated/glazed panels, special lap-top shelves, custom-made powder coated MDF and metal storage.

# INVESTING IN INTEGRITY

The sepia palette, banksia imagery and luminous warmth of Adelaide's KPMG headquarters define the new premises as distinctly South Australian. With sweeping views of the Adelaide Hills to the East and the city skyline to the North, employees enjoy what Angelo Di Marco (Principal at Woodhead) describes as, 'a fundamental access to natural light and views, with colours, materials and finishes highlighting local influences, with reference to KPMG's aligned businesses such as resources and wine industries.'

\_For KPMG, a leading audit, tax and advisory firm, the move to 151 Pirie Street was significant in itself. The newly constructed building is well known for its environmental sustainability, boasting 4.5 and 4 stars respectively from the Australian Building Greenhouse Rating scheme, and the Green Building Council of Australia. As Peter Siebels, (KPMG Chairman of Partners South Australia) describes: 'We have set out to refresh KPMG. We need to be a bolder firm, so this move has been a very physical demonstration of continuous improvement.'

\_For its 240 employees, it was important for KPMG to convey the firm's values and brand attributes into the built environment, and to allow communal ownership of the space. 'A rigorous consultation process was undertaken engaging KPMG's people to collectively develop and reach solutions' (Angelo Di Marco). KPMG's Facilities Manager Belinda Powell states, 'In line with the KPMG values, we wanted the business to demonstrate it was open with communication

through transparency and the encouragement of team work.'

\_Enhancing KPMG's transparent, light-filled culture was the utilisation of Schiavello's i.box glazed partition system. Schiavello's SA Systems Furniture team specially developed the full-height i.box system with the expertise of Schiavello's Research and Development division. Workstation and storage solutions were selected from the Schiavello range for not only their unique design statement and usability, but also their sustainability features. QED desking, System 45 panels, tambour cupboards and custom-made storage shelves were designed and manufactured to suit the architect and client's needs. 'Using the 120-degree workstations with low height screens in an irregular layout created visual openness, encouraging contact between staff, and maximisation of light' (Belinda Powell). The MDF powder coat technology with E0 board (on work surfaces) is proven to drastically reduce toxic emissions, materials and life cycle impact. The durability and adaptability of Schiavello's systems furniture also means fewer replacements and flexibility of workstation arrangements.

\_Angelo Di Marco comments on Schiavello's performance: 'From sourcing locally available materials to designing to maximise long-term flexibility and reusability the team worked from sound green building practices to develop solutions that were cost-effective and commercially manageable.'



**Project Location**  
Southern Cross  
Building  
121 Exhibition Street  
Melbourne

**Client**  
VICTORIAN  
GOVERNMENT:  
**Department of**  
**Innovation, Industry +**  
**Regional Development:**  
Tess Shipton  
**Department of Justice:**  
Andrew Sutherland  
**State Revenue Office:**  
Leo Klepkas

**Design**  
Geyer Pty Ltd:  
John Lenagan  
Shane Wintershoven

Schiavello  
**National Projects**  
Raffaele Tigani  
Robert Amorosi  
Aaron Scott  
Kara Taggert  
**Schiavello Vic Fitout**  
Richard Halasa  
Matthew De Carolis  
Kyle Jensen  
Jason Kotis

**Schiavello Vic Systems**  
Raffaele Tigani  
Joe Curmi  
Andre Caruana  
David Tomassi

**Area**  
50,000 m²

**Products**  
Unimet panels,  
QED desking,  
Elitone desking,  
Systemet storage,  
Klöber Cato chairs,  
Novetta chairs, Alto  
stools, custom-made  
full height + Millem  
partition systems.

SOUTHERN CROSS  
FITOUT + SYSTEMS

Victorian Government  
-State Revenue Office  
-Department of Innovation,  
Industry and Regional  
Development  
-Department of Justice

UNDER THE  
SOUTHERN  
CROSS

Located at the prominent intersection of Exhibition, Bourke and Little Collins Streets in Melbourne’s CBD, the newly developed Southern Cross Building is a landmark address. Southern Cross accommodates three Victorian Government Departments across 24 of its 37 storeys: the Department of Innovation, Industry and Regional Development (DIIRD) the Department of Justice (DOJ) and the State Revenue Office (SRO). While predominantly operating independently from one another, it was ideologically beneficial for the departments to be unified under one roof, and the fitout design has been applied consistency throughout. The Government agencies and Geyer’s design team undertook the challenge within the fast-track program with a brief to provide a whole government facility, while expressing the unique brands of each department. It was also crucial to maximise the performance of shared facilities, while including client receiving and training facilities, centralised within the stack. \_Schiavello’s Vic Fitout team completed the joinery as well as the supply and installation of partitioning, with the Schiavello Systems Furniture team managing all facets of workstation desking, storage and seating — sizable tasks given the 50,000m² office space. As uniformity was important in the three departments, Schiavello’s products were used across all floors in varied forms.

The products’ environmental sustainability, functionality and stylised aesthetic were the requisites that won Schiavello the tender. These products included customised Elitone and QED desking, Unimet partitions and Systemet storage. Novetta and Klöber Cato were the task chairs of choice due to their modern, durable and ergonomic design. Alto stools were employed in more casual domains with tailor-made full-height partitions used for meeting rooms; with glazing a combination of transparent and translucent to suit different functionalities. \_The Department of Innovation, Industry and Regional Development (DIIRD) is the Victorian Government’s lead agency for economic and regional growth, occupying Levels 31-36, Level 2 (part) and the ground floor Victorian Business Centre (part). DIIRD’s responsibilities for generating investment and exports and subsequently jobs resulted in a subtle pastel palette, with bolder citrus colour statements applied sporadically in interactive areas. As Tess Shipton, Property Manager, DIIRD expressed, ‘We wanted a fun workplace, so it’s good to have the splashes of colour. The screens on each floor of DIIRD are different colours to add an element of individuality between sectors whilst maintaining the design theme’.



SOUTHERN CROSS  
FITOUT + SYSTEMS

Project Location  
Southern Cross  
Building  
121 Exhibition Street  
Melbourne

Client  
VICTORIAN  
GOVERNMENT:  
Department of  
Innovation, Industry +  
Regional Development:  
Tess Shipton  
Department of Justice:  
Andrew Sutherland  
State Revenue Office:  
Leo Klepkas

Design  
Geyer Pty Ltd:  
John Lenagan  
Shane Wintershoven

Schiavello  
National Projects  
Raffaele Tigani  
Robert Amorosi  
Aaron Scott  
Kara Taggart  
Schiavello Vic Fitout  
Richard Halasa  
Matthew De Carolis  
Kyle Jensen  
Jason Kotis

Schiavello Vic Systems  
Raffaele Tigani  
Joe Curmi  
Andre Caruana  
David Tomassi

Area  
50,000 m²

Products  
Unimet panels,  
QED desking,  
Elitone desking,  
Systemet storage,  
Klüber Cato chairs,  
Novetta chairs, Alto  
stools, custom-made  
full height + Millem  
partition systems.

Utility rooms were also of functional importance: ‘Collating and gathering information is important to DIIRD. Utility rooms with benches and storage were designed; both personalised and for teams.’ A workstation prototype was developed by Schiavello (Elitone desking) and assessed by DIIRD staff, with the decision for one style of desking across the department made to lessen any hierarchy and enable interchangeable working conditions. Large, café style breakout areas were also important for all departments, to create a completely distinct space for informal gatherings.

The State Revenue Office (SRO) residing on levels two and three is the Victorian Governments’ major revenue collection agency. SRO’s requirements for adaptation and change dictated the inherent flexibility and multi-purpose features of the design. It was vital that the SRO accommodation align with their corporate values of professionalism, efficiency and technological advancements while remaining dignified and subtle. The open plan workplace also encourages information-sharing and communication, enhancing the ‘employer of choice’ philosophy. The welcoming shop-front design is readily adaptable for developments towards electronic customer interface, with visiting staff from SRO’s Ballarat office also provided with working facilities.

Leo Klepkas, SRO’s Facilities Manager discussed the design that integrates the concept of ‘triple bottom line’: environmental, social and economic sustainability. Schiavello’s products and procedures were selected for their ability to meet all of these requirements. Staff have the benefit of working from any chosen position within the workstation, as well as height adjustability.



3



4

1\_Level 27’s lustrous reception area.  
2\_Unimet workstation screens with panel  
mounted worktops and QED returns,  
pedestals with fitted side-pull handles  
and cushion tops, desk clamped slimline  
panels, metal transom mounted shelving.  
3+4\_Workstations as per image 2,  
with passage screens featuring  
perforated metal tiles, powerblades  
with coloured Perspex.



SOUTHERN CROSS  
FITOUT + SYSTEMS

**Project Location**  
Southern Cross  
Building  
121 Exhibition Street  
Melbourne

**Client**  
VICTORIAN  
GOVERNMENT:  
**Department of**  
**Innovation, Industry +**  
**Regional Development:**  
Tess Shipton  
**Department of Justice:**  
Andrew Sutherland  
**State Revenue Office:**  
Leo Klepkas

**Design**  
Geyer Pty Ltd:  
John Lenagan  
Shane Wintershoven

**Schiavello**  
**National Projects**  
Raffaele Tigani  
Robert Amorosi  
Aaron Scott  
Kara Taggert  
**Schiavello Vic Fitout**  
Richard Halasa  
Matthew De Carolis  
Kyle Jensen  
Jason Kotis

**Schiavello Vic Systems**  
Raffaele Tigani  
Joe Curmi  
Andre Caruana  
David Tomassi

**Area**  
50,000 m<sup>2</sup>

**Products**  
Unimet panels,  
QED desking,  
Elitone desking,  
Systemet storage,  
Klöber Cato chairs,  
Novetta chairs, Alto  
stools, custom-made  
full height + Millem  
partition systems.



5\_Custom designed  
demountable partitions with  
solid timber feature sections.  
6\_Millem partition system with  
translucent glass panels.

‘We visited the Schiavello showroom and recognised the quality. We chose workstations with clear glass Unimet panels to allow maximisation of light and openness for staff. Complete with state of the art breakout areas, an environment has been created that staff are proud to work in.’  
\_With over 2000 people, the Department of Justice occupies in excess of 14 floors with its services encompassing consumer affairs, corporate services and the policy development of gaming, legal matters and law-enforcement. Andrew Sutherland [DOJ Property Manager] discussed the advantages of creating consistency with a flexible workstation system throughout the tenancy, adding, ‘In future this will greatly assist if individuals or teams need to be relocated quickly.’  
He continues with the reasons for choosing Schiavello, ‘They won the tender for their product’s high quality, competitive cost and a now proven ability to be readily adaptable.’  
The building’s understated style permeates, with neutral bases, crisp white breakout areas and bright flashes of red and green on workstation screens.  
\_The target for a 4.5-Star Green ESD rating for the interior fitout was set

by Victorian Government’s Property Group [VGPG]. Geyer worked with all sectors towards sustainability throughout the design and delivery; with Schiavello’s products meeting the stringent requirements. The Australian Building Greenhouse Rating [ABGR] performance for the building and supporting services are currently under review. Other environmental considerations include the freestanding waste management systems designed especially and used extensively to improve recycling habits. The consolidation of support equipment with a ratio of one printer between six to ten employees (depending on each agency’s target) was another method of increasing awareness and reducing energy and paper consumption.  
\_Geyer’s ‘master plan’ solution over the three rises creates a highly flexible and responsive work space, based on a kit of parts philosophy applied to all work spaces and settings. As John Lenagan from Geyer concludes: ‘Each fitout has been subtly and distinctly re-branded for each of the government agencies as required to align with their aspirational design briefs and yet still provides the Victorian Government with a longer term solution that can be easily changed over time.’



**Project Location**  
**Building H5**  
**Caulfield Campus**  
**Victoria**

- 1\_Striking corridor with spray-painted architectural panelling.
- 2\_An intimate lecture theatre.
- 3\_Meeting rooms featuring customised Millem partition system with adjacent waiting area.
- 4\_Open stairwell with personalised graphics applied.

**Client**  
**Monash University:**  
**Christian Frye**  
**Bradley Williamson**

**Design**  
**HBO+EMTB:**  
**Tina Berardi**  
**Vincent Yang**  
**Julia Morris**  
**Katrina Egan**

**Schiavello Vic Fitout**  
**Matthew De Carolis**  
**Jason Kotis**

**Area**  
**20,000 m<sup>2</sup>**

**Products**  
**Millem partition system.**



1



2



3



4

**MONASH UNIVERSITY**  
**CAULFIELD CAMPUS** FITOUT

Monash University's new multi-purpose facility receives a high distinction from teaching and learning minds alike.

# CLEARING THE COBWEBS OF ACADEMIA

As a prestigious educational institution, Monash Caulfield is as open to their new development as they are to the university's constant exchange of ideas. The sleek facilities accommodate students, teaching and administration staff, comprising lecture theatres and teaching spaces, offices, computer labs and meeting areas. The 220 seat café/restaurant and adjoining exhibition space allow for cultural events and opportunities for social gatherings. \_Monash University briefed a design that was, 'clean, timeless and edgy'. The success of these requirements was met through the designer, HBO+EMTB's Tina Berardi. Ms Berardi describes the project as a 'shift from the traditional and institutional to progressive and corporate' and 'challenging the traditional' was an important element. The functionality of the teaching spaces combines office-planning principles with quality finishes and joinery akin to a high profile business environment. The refreshed outlook is now recognisable as a sophisticated workplace as well as an advanced learning space. \_From warm fiery shades in the lecture theatres, to a cool and open atmosphere in the offices and meeting rooms, as well as the textured elements of the design; a sensory experience is created throughout. Splashes of recessed colour and chocolate tones on the hallways lead through to the light-filled administration spaces.

A combination of transparent and translucent glass generates a feeling of openness tantamount to this progressive university environment. \_Schiavello's Millem partition system is a particular feature that complements the crisp modernity of the Monash design. With its reinforced steel frame, a reduction in connecting materials and requirement for future maintenance is achieved. Ms Berardi elaborates on Schiavello's services: 'The brief for Monash was for a durable, high-quality fitout that is flexible and able to respond to ever-changing staff numbers and new technology. Schiavello's reputation for quality and durability fitted perfectly with this. Within the tight timelines and budget constraints of the project, Schiavello worked with us to practically achieve our design goals without compromise.' \_Environmental implications were an important consideration, with the maximisation of natural light in the perimeter's shared breakout facilities, and the use of glazed internal partitions. With their modular and 'timeless' designs, the fittings and furniture are all reusable. Simple and natural products allow flexibility for growth and seamless future additions. \_The Monash Caulfield upgrade bestows a complete physical and intellectual invigoration that will barely allow the dust to settle.



**Project Location**  
618-644 Chapel Street  
South Yarra  
Victoria

1\_Palace Cinema's luscious  
foyer featuring decadent  
furniture and accessories.

**Client**  
Palace Cinemas:  
Antonio Zeccola  
Benjamin Zeccola

**Design**  
Hecker Phelan  
and Guthrie:  
Hamish Guthrie  
Paul Hecker  
Hugh Lane

**Schiavello Project  
Solutions**  
Peter Thompson  
Adam Terrill

**Area**  
500 m²



# RAVISHING DRAMA

An alluring glow of soft golden light radiates through the shop window and draws me in off a wet, cold Chapel Street. As I step into the theatrically furnished space, complete with heavy black curtains, ornate fringed lamps and delectable furniture, I attempt to decipher what this fantastical place is that I have entered.

\_The Palace Cinema's new foyer is an ambrosial delight. Designed by Hecker Phelan and Guthrie (HPG) through the trusting guidance of Palace's owner Antonio Zeccola, the result is a surprising combination of lush materials, eras and other-worldly themes, evoking a sensory explosion.

\_Customers linger for drinks at the bar and lounge on the circular gold velvet banquette, adorned with diamond button detail. Gothic chairs and black Baroque mirrors that echo themselves into eternity emerge under spotlights through the dark backdrop. These focal points behave in what Hugh Lane of HPG describes as 'a series of intimate theatre sets, within a dark Parisian salon.'

\_With the intention of offering a sophisticated meeting place before a movie, and for luxurious reflection afterwards, Palace Cinema's foyer and bar encapsulate the cinematic experience, providing a memorable night out. Creating an environment between the imagined and the harsh bustling reality of the outside world, HPG provide a transition zone which envelopes the movie watcher. As Hugh Lane continues, HPG have 'taken great delight in creating a wonderful buffer space through careful use of finishes,

lighting and décor'. Antonio Zeccola wanted to offer patrons 'something different from the standard suburban cinema experience, to avoid the harsh finishes and bright lighting which typically jar the senses immediately after the darkness of the cinema auditorium.'

\_The enriched experience was aided by Schiavello's Project Solutions (SPS) team, acquiring the head contractor role. Schiavello was chosen for the client's confidence in their demonstrated track record to deliver successful solutions. SPS demonstrated their commitment to delivering within the twelve week deadline, and in particular, on a type of project atypical for Schiavello. Adam Terrill (SPS) elaborates, 'The project was set on a very tight timeframe with an expectation of a quality high class finish. Some specified products were either not available or suitable. We had to shop with the client far and wide in order to meet the project expectations. It was a very rewarding project considering restraints that were in place from day one.'

\_Palace Cinemas are renowned for exhibiting impressive art-house, cutting-edge and international cinema, and each year host highly-acclaimed cinematic events, including the Italian and Greek film festivals. A playful and opulent piece of theatre in itself, the design of the Palace foyer acts as an extension of the superior selection of films on show; as well as the eclectic cultures and celebration of the art form that is cinema.



**Project Location**  
Curve Bar  
The Arts Centre  
100 St Kilda Road  
Melbourne

**Client**  
Victorian  
Arts Centre Trust:  
Tobi Pedersen

**Design**  
Woods Bagot:  
Nik Karalis  
Bruno Mendes  
Trish Turner

**Schiavello Vic Fitout**  
Tommi Cosgrove  
Tommy Virgato

**Area**  
300 m²



1\_Sweeping view from the main entrance showing mirrored walls and curved banquette seating.  
2\_Demonstrating carpet design feature and retro styling.  
3\_Long marble bench with banquette seating.

**CURVE BAR, THE ARTS CENTRE, MELBOURNE** FITOUT

# CURVES IN ALL THE RIGHT PLACES

With a double shot of style and a twist of groove, the Arts Centre’s hip Curve Bar manages to attract the younger demographic that was desired, as well as performance-loving faithfuls in the mood for a change. \_The bar, with full kitchen, conceived as an additional alternative to the existing food and beverage offers at the Arts Centre, was designed by Woods Bagot, with the interior fitout completed by Schiavello. Described by the Arts Centre’s Tobi Pedersen as, ‘an exciting bar space comparable in quality to the best new bars in Melbourne’, Curve Bar succeeds in enhancing the Arts Centre experience, and as a bar for local businesses, residents and outsiders to enjoy.

\_Influences from decades past, and possible futures are evident, with retro and quasi-futuristic fittings and furniture key elements to the design. Woods Bagot’s Nik Karalis: ‘The inspiration came from the building’s heritage; its existing lavish and bold interiors by John Truscott in the ‘80s. We drew upon this influence and developed a design that would complement the richness of the Arts Centre spaces.’ \_With not a harsh edge in sight, the ‘curve’ theme is continued through the choice of softly formed furniture, pylons and light fixtures. The carpet pattern is a dominant feature — concentric, overlapping circles that dictate the placement of curved banquettes and seating near the entrance.

The architecturally challenging shape was subsequently celebrated with all things curvaceous. ‘The long, narrow, curved space formed the base geometry’ (Tobi Pedersen). Described by Nik Karalis as ‘cavernous’ with ‘secluded nooks upon the journey until it opens up to the main bar forming the communal drinking table.’ Mr Karalis explains how the patron’s gaze is drawn continually around the natural curve of the façade, and extended out to the external garden and beyond. ‘Bringing the outside in allows patrons to overlook the gardens or find a secluded nook to retreat to outside.’ \_Schiavello’s Vic Fitout team rose to the challenge of the problematic shape of the space, as well as the acoustic requirements resulting from the Playhouse Theatre’s location directly under the bar. In particular, construction needed to be carefully managed around performances to ensure there was no noise transferred during shows. \_A sensual feast fit for theatrical kings and queens, the relaxed, shared environment of Curve Bar offers a fun and sophisticated retreat for lovers of theatre and a night out alike.



**Project Location**  
Kioicho Building  
3-12, Kioicho  
Chiyoda-ku  
Tokyo Japan

**Client**  
Nagashima Ohno  
& Tsunematsu:  
Ms Hisako Iwai

**Design**  
Koyuko Office  
System Co:  
Mr Toshimitsu  
Sugawara

**Schiavello Japan**  
David Ellis  
Takehiko Nakajima  
Yoshinao Aoki

**Area**  
1630 m²

**Products**  
System 55 screens  
with Admet rail +  
timber laminated  
curved worktops,  
pedestals and  
accessories.  
Sesto height-  
adjustable desks.



1



2

1+3 Workstations comprising  
System 55 screens 1100 mm high with  
Admet rail (950 mm high from the floor  
for secretary area) customised timber  
laminated curved worktops with pedestal  
and accessories.  
2 Enclosed office furniture with Sesto  
height-adjustable desks and custom  
made furniture.



3

**NAGASHIMA OHNO &  
TSUNEMATSU JAPAN**

Experiencing a new era of  
development and evolving work  
cultures, this international law  
firm is personified through its  
physical surroundings.

# FOREIGN CORRESPOND- ENCE

Japan's leading and most diverse law firm, Nagashima Ohno & Tsunematsu (NO&T) provides widespread legal advice to both Japanese and foreign clients across all areas of business. With extremely rapid growth recently experienced and the prioritisation to physically express the company's outstanding reputation, a new head office was required.

\_Outside influences played a key role in the design of the new environment, with distinctions drawn by lawyers who travelled abroad on business noticing the growing trends toward openness and comfort within work spaces. The previous office's image was described by Senior Designer Mr Toshimitsu Sugawara (Koyuko Office System Co.) as 'cold, due to building standard grey carpets and white desk tops', so the brief specified a sense of warmth and style in conjunction with functionality.

\_The timing of the new workplace was ideal, according to NO&T's Ms Hisako Iwai, who expressed the positive changes taking place within the company, and the need to demonstrate their sophistication and facilitate relationships between staff. 'The expanding of the office was timed perfectly to put our ideas towards the company's future into effect. We aimed to create an office environment to provide a high quality legal service and to enhance the organisational functions, corporate structure and staff support system.'

Schiavello's Systems Furniture team was selected for their capabilities in creating custom-made solutions. Flexibility was a desirable feature: 'Since there are many foreign lawyers in our office, it is useful to have a height adjustable desk so this can be altered depending on physical size' (Ms Iwai commenting on the Sesto desking systems). From a designer's perspective, Mr Sugawara was also impressed with Schiavello's products – from the availability of colour choices and durability, to their enthusiasm to create an original concept for storage solutions: 'Schiavello is superior in their flexibility and variety of colours and the high quality of the material. This also means costs are reduced.' System 55 workstations were also selected for their custom-styling capabilities, with a wave-design used to encourage synergy and the flow of communication.

\_A space that facilitates trust and approachability between departments resulted. Mr Sugawara discussed the design's open, smooth flowing plan, with natural materials employed for a lighter, warmer atmosphere. Natural light utilisation also assists in the staff's levels of comfort and reduced need for artificial lighting.

\_A new era of openness and wellbeing among staff is taking the Japanese legal world by storm. NO&T have proven themselves leaders in corporate Japan, facilitating such positive advancements in OH&S performance and innovative design.



AUSTRALIANSUPER  
FITOUT + SYSTEMS

What do you get when you  
merge two of Australia's most  
prestigious and successful  
industry superannuation funds?  
A youthful organisation poised  
for great heights.

SUPER  
POWERS UNITE

**Project Location**  
Levels 32 + 33, 50  
Lonsdale Street  
Melbourne

**Client**  
AustralianSuper:  
Jill Ireland

**Design**  
**John Wardle Architects:**  
John Wardle  
Kirrilly Wilson  
Fiona Dunin  
Toby Horrocks  
Barry Hayes  
Adam Brown  
Dale Hewlett

**Project Manager**  
Montlaur  
**Project Services:**  
Will Cuming

**Schiavello Vic Fitout**  
Andrew Howard  
Tommy Virgato  
Tommii Cosgrove  
Gary Edwards

**Schiavello Vic Systems**  
Stephen Villiers

**Area**  
3000 m<sup>2</sup>

**Products**  
QED desking and  
pedestals, System 45  
pinable screens with  
magnetic whiteboards,  
Millem partitions.

- 1\_AustralianSuper reception area including exposed plywood counter continuing the Urban Workshop's design theme, Millem toughened glass partition system with pivot doors.
- 2\_Mezzanine level breakout area with timber panelling.
- 3\_Meeting room with integrated timber veneer storage and cupboards, showing 'city-scape' theme.
- 4\_Open plan workstation area with QED desking and powder coated pedestal with System 45 pinable screens, showing 'city-scape' division solution.

With an impressive 1.2 million members already in tow, AustralianSuper was formed in July 2006 when Australian Retirement Fund (ARF) and Superannuation Trust of Australia (STA) merged, creating the necessity for a large new head office.

\_Celebrating striking city views from the top of Melbourne's iconic Urban Workshop (see page 24), John Wardle Architects have complemented yet contrasted the natural feel of timber panels and warm down lighting with sleek, bold furniture choices.

The cityscape echoes throughout the interior, with the 'Manhattan skyline' sculptured-storage units (joinery by Schiavello) creating subdivisions between team zones. These features create a common design language and materiality with the Urban Workshop's illustrious ground floor entrance; created by joint venture WBNH, with which John Wardle Architects were pivotal members. Schiavello's involvement with the Urban Workshop fitout extends throughout the tenancy into each floor's lift lobby, and into the AustralianSuper project. This continued participation was critical in keeping the quality of the designers' vision to a high and consistent standard.

John Wardle Architects also drew subtle reference to the city's gardens with forest-like screen prints on Schiavello's glass Millem partitions.

\_Jill Ireland, AustralianSuper (General Manager, Relationships Management) specified a brief to John Wardle Architects that was 'open plan, with excellent staff facilities, quiet rooms in lieu of offices and design/décor that

Originating from more conventional closed office spaces, the employees were confronted with the notion of not only a new environment with new faces, but a different work culture.

As John Wardle Architects explains: 'It was vital that AustralianSuper's new workspace demonstrated to their staff and stakeholders the merged funds' open, transparent and member-focused culture.'

\_Schiavello's Systems and Fitout teams supplied workstations, systems furniture and undertook the architectural joinery construction. This included the reception counter, boardroom panelling and credenza unit, along with the staff kitchen joinery and wall panelling wrapping around the mezzanine. Jill Ireland recognised Schiavello's ability to 'provide solutions that were cost-effective and often ensured a positive outcome.'

The QED workstation with System 45 screens was selected from Schiavello's range for aesthetic value, ESD qualities (Schiavello's powder coat MDF technology greatly improving life cycle environmental impact), modularity, height flexibility and in particular because it is locally manufactured.

John Wardle Architects: 'The [Schiavello] team was very accepting in constructing some highly complex details and unique forms. Their extensive knowledge of the construction industry, materiality and systems enabled the project team to resolve some of the more complex details on site.'

John Wardle Architects conclude, 'Schiavello's Fitout team and management of all subcontractors was instrumental to the project's success.'





**Project Location**  
Levels 12-14  
333 Collins Street  
Melbourne

**Client**  
Worley Parsons:  
Robynne Danks

**Design**  
Graham Nicholas:  
Liz Hughes  
Martin Butler

**Schiavello Vic Fitout**  
Daron Johnson  
Robert Volarevic  
Tony Seci

**Area**  
1600 m<sup>2</sup>

**Products**  
Full height Millem  
partition system.



1\_Reception and waiting area with feature laminate counter and ceramic honed floor tiles extending up the front of the counter.  
2\_Millem system-fronted meeting room, adjoining hallways comprising flush plasterboard ceiling with lighting trough highlighting stone feature wall and fabric wall panelling.  
3\_Frameless toughened glass partitions with velour carpet and polished stone flooring.



WORLEY PARSONS FITOUT

The synergy of bold and confident design with understated style creates a consistent balance within Worley Parsons’ new premises.

REFRESHED RESOURCES

Worley Parsons, an Australian-based provider of professional services to energy, resource and complex process industries had overnight become one of the largest companies of its kind in the world. The growth that ensued, (opportunistically coinciding with their previous headquarters’ lease expiration) resulted in the move to the iconic 333 Collins Street Melbourne address. \_Design and project management firm Graham Nicholas were selected for their merit and experience in corporate design. Responding to the engineering nature of Worley Parsons’ portfolio, they paid ‘close attention to simplicity and fine detailing. A choice of natural materials, colours and highlights of metal enhanced this notion, while the corporate red imposes a strong identity’ (Liz Hughes, Graham Nicholas). Worley Parsons’ Robynne Danks continues the sentiment, ‘We wanted something simple, not “fluffy” considering the nature of the company. This design with standard, crisp finishes will stand the test of time.’ \_The company’s corporate colours of white, black and red are ingeniously applied as a continuing theme to link all departments. The striking hues create fun social spaces through brash strips of glossy red; with a more subtle but strong use of crimson in meeting rooms and work spaces through carpet designs and soft furnishings. Liz Hughes makes reference to the central ‘light-well’ formed in the basis of the new reception, acting as a focal point and a further connection across floors. In a practical sense, the open planned design of work spaces ensures equality between teams.

Schiavello’s Fitout team performed the head contract role, working alongside Graham Nicholas to complete the project within time restraints. ‘The tight time frame presented a challenge, but through the dedication of Schiavello and Graham Nicholas, the challenge was met’ (Robynne Danks). The full height Millem partition supplied by Schiavello was chosen for its discreet lines, durability, and the plentiful natural light that permeates – lessening artificial light requirements and enhancing staff experience. \_Graham Nicholas also worked with Schiavello to develop a control waste system involving the sorting and recycling of materials and rubbish on site. This implementation resulted from all parties’ shared commitment to sustainability. \_Through a truly collaborative relationship, the seamless success of Worley Parsons’ new Melbourne headquarters was accomplished. Robynne Danks continues, ‘Schiavello, working closely with Graham Nicholas and myself, made my life very easy. Schiavello were capable of coming up with quick decisions through discussions, acting fast. Without them, there was no way we would have achieved our goals.’



**Project Location**  
Level 8  
Statewide House  
99 Gawler Place  
Adelaide

**Client**  
Zero Waste SA  
Piero Fioretti

**Design**  
Jackman Parken Evans:  
Dennis Kipridis  
Anna Pyrzakowski

**Schiavello SA Fitout**  
Scott Charlton  
Daniel Ross  
Leo Maria

**Schiavello SA Systems**  
Tony Sedgman

**Area**  
425 m<sup>2</sup>

**Products**  
Millem glazed  
partitions, QED desking  
and storage, System 45  
panels, Interpower soft  
wired power rails.



1



2

1\_View of hard wood entry  
feature wall (built by  
Schiavello) through to waiting  
area, and glazed Millem  
partition system.  
2\_Millem finished aluminium  
glazed partition system with  
feature window film and full  
glass cedar doors leading into  
workstation area including  
QED desking and tambour  
units using MDF powder coat  
technology. System 45 feature  
with their translucent panels  
and soft curved power rails.

**ZERO WASTE SA**  
FITOUT + SYSTEMS

# GREENING GOVERNMENT OPERATIONS

The serious business of environmental sustainability has a quirky edge at Zero Waste SA's new headquarters. A fusion of unlikely materials – rustic, textile and ultra modern, represents 'waste not, want not' practices, as well as the collaborative culture imperative to Zero Waste SA's brief.

\_In 2003, the SA Government established an initiative to promote waste management practices that eliminate waste, or its consignment to landfill and to enable state and local government, industry and the community to work together to achieve waste-reduction goals.

\_Seizing the opportunity to demonstrate leadership through the design of their headquarters, Zero Waste SA's Chief Executive Vaughan Levitzke explains, 'We needed to show that we're putting our money where our mouth is in terms of leading the way, not just in waste management, but also sustainability. We thought it would be very useful to have a case study that others can either emulate or learn from.'

\_The proven leadership in green practices is evident in the extensive array of environmentally sustainable design choices. Jackman Parken Evans' senior designer Dennis Kipridis: 'The Zero Waste SA fitout is currently being promoted as a benchmark for green office fitout. The design incorporates numerous passive and active ESD principles.'

Wherever possible, every minute aspect of the fitout considered sustainable materials, methods of construction and detailing. Factors such as good orientation, 'greener' manufactured products, reused and recycled/recyclable building systems and joinery, and upgrading of base building services were all successfully addressed. Modularity of building systems and furniture was also employed, as was re-locatable and flat pack furniture.

\_The Fitout and Systems Furniture teams from Schiavello supplied products and services in keeping with Zero Waste SA's philosophies. Schiavello provided a highly flexible and interactive space, 'with materials, finishes, colours and layout creating a relaxing and highly social interactive environment' (Dennis Kipridis).

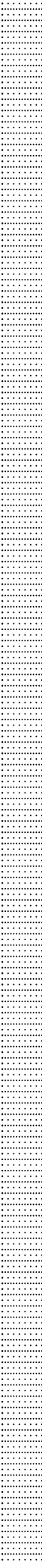
The QED system and System 45 were chosen for their aesthetic appeal, their modularity, durability, and to reduce churn. Use of E0 MDF (virtually no formaldehyde emissions) in the products was also of particular significance. The hardwood entry feature wall built by Schiavello was designed as a visual feature and assists with air return movement.

Schiavello's products from the QED desk based system furniture and associated accessories through to the construction of the 'straw bale' wall provided environmentally effective solutions. The perception of green design as an expensive option was challenged by Schiavello, whose commitment to providing exceptional products was not compromised by extensive costs. Vaughan Levitzke elaborates: 'Costs for green fitouts are normally higher than conventional fitouts and Schiavello's overall construction costs enabled the project to come within budget'.

\_Receiving a commendation under the category of 'sustainable architecture' at the 2006 South Australian Architecture Awards, and an award for design excellence from the Design Institute of Australia, Zero Waste SA has established a prominent position in sophisticated ESD workplace design. With vision, a touch of creativity and thought provocation, environmental sustainability breaks through convention and produces an outstanding example of the synthesis of aesthetics and green principles.

**The Zero Waste SA fitout is documented at [www.zerowastesa.gov.au](http://www.zerowastesa.gov.au)**

Also refer to Schiavello's new Environmental Rating Tool (ERT) on page 75.





**Project Location**  
1095 Frankston-  
Dandenong Road  
Carrum Downs  
Victoria

**Client**  
Ritchies Stores:  
Mal Cameron

**Design**  
Woods Bagot:  
David Ley  
Grant Filipoff  
Gabriella Gulacsi  
Sophie Safrin  
Sue Solly

**Schiavello Vic Fitout**  
Tommi Cosgrove  
Craig West

**Schiavello Vic Systems**  
Stephen Rando  
Joe Curmi  
Gareth Bennett

**Area**  
1560 m²

**Products**  
Millem glazed  
partition system,  
QED desking, System  
45 panels, Systemet  
storage, Interpower  
softwiring.

**RITCHIES/IGA**  
**FITOUT + SYSTEMS**

You’d be forgiven for walking  
into the walls at the new  
Ritchies-IGA head office.

# BACK TO THE FUTURE

The distinct murals emblazoned on walls and glass partitions draw employees into Ritchies’ fledgling beginnings of the 1870s, and are a testament to the company’s ever-expanding horizons. From advertisements and promotions, to life-size images of supermarket interiors and shop fronts, the mural often resembles craft-like papier-mâché, and retro style with an ultramodern approach. \_Schiavello Vic was granted the three-storey fitout and systems furniture project, and was commended by Ritchies Director Mal Cameron: ‘They did everything from go to whoa. The number one thing that appealed to me was that we were dealing with one person, and that helped in any query or problem which applies even after the job’s finished.’ \_Mr Cameron maintained in the brief the importance of portraying the company’s proud tradition. ‘One of the things we stipulated was the history of the company. The history is one of our strengths and Woods Bagot and Schiavello came up with the concept of the big murals to convey that.’ \_Bold colour statements reflect the modern, positive outlook Ritchies encapsulates. The vivid orange and red creates a backdrop linking the company’s past, present and future eras. Woods Bagot architect David Ley elaborates, ‘A ribbon of colour has been taken up the vertical axis and woven through the support rooms, offices and breakout spaces of each floor.’

Schiavello’s QED system and screens along with Systemet mobile pedestals, and the streamline Millem system enhance the design’s contemporary elements and take the office to the next level of progressive aesthetics and functionality. Among the QED products’ environmental benefits are its MDF powder coat technology, which decreases environmental impact significantly. The workstations, partitions and storage systems are all modular and extremely sturdy, therefore reducing the need for replacement and future consumption. \_Centrally located support spaces such as meeting rooms and utility areas surrounded by open plan offices keep the space open, light and airy. As David Ley describes, the internal structures relate directly to the company’s structure and operational methodology, with the combination of traditional independent working spaces and communal areas improving synergy and openness. \_The company’s continued expansion was the catalyst to the new premises, and staff members are suitably delighted with their striking surroundings that include amenities such as breakout areas and entertainment facilities. The mixture of open and closed spaces provides a versatile working environment. \_Unsurprisingly, Mal Cameron proclaims the new office space as a popular addition to the ongoing Ritchies story. ‘Everyone that comments on the office says it’s so distinctive; it’s got the wow factor. We’ve captured the history but in such a modern way. I think we’ve just got an A-grade result.’





RITCHIES/IGA HEADQUARTERS  
FITOUT + SYSTEMS

**Project Location**  
1095 Frankston-  
Dandenong Road  
Carrum Downs  
Victoria

**Client**  
Ritchies Stores:  
Mal Cameron

**Design**  
Woods Bagot:  
David Ley  
Grant Filipoff  
Gabriella Gulacsi  
Sophie Safrin  
Sue Solly

**Schiavello Vic Fitout**  
Tommi Cosgrove  
Craig West

**Schiavello Vic Systems**  
Stephen Rando  
Joe Curmi  
Gareth Bennett

**Area**  
1560 m²

**Products**  
Millem glazed  
partition system,  
QED desking, System  
45 panels, Systemet  
storage, Interpower  
softwiring.



- 1\_Meeting rooms using Millem glazed system with applied graphic film.
- 2\_Stairwell demonstrating bold colour and unique graphic elements.
- 3\_Offices and open workstations using Millem glazed partition system, QED desking, Systemet storage and accessories.
- 4\_Open work area with QED desking, System 45 panels and Systemet storage.





**Project Location**  
102 Briens Road  
Northmead  
NSW

**Client**  
Coca-Cola Amatil:  
Bill Morakis  
Colin Ives

**Design**  
**Designed Interiors:**  
Marianne Bokor  
  
1\_Open workstation area showing  
System 45 low-height corridor  
panels, Elitone desking and shelf  
accessories.  
2\_Elitone and System 45 workstation  
cluster with laminate mobile  
pedestals, Systemet storage and  
Interpower softwiring technology  
including umbilicals and System 45  
power blades.

**Project Management**  
GVA Grimley:  
Jo Anne Harrison  
Naomi McDonald

**Schiavello NSW Systems**  
Ashlee Swindon  
Serge Mezzina

**Area**  
3500 m²

**Products**  
Elitone desking,  
System 45 panels,  
Systemet storage +  
shelving, custom-made  
laminate mobile  
pedestals, Interpower  
softwiring technology  
umbilicals + System 45  
power blades.

# SPARKLING CREATIONS

Coca-Cola Amatil (CCA) needs no introduction. As manufacturers of some of the best selling and most recognisable food and beverages globally, CCA is an extremely successful publicly listed company, with operations in Australia stemming back to 1904.

\_When CCA made the decision to relocate 250 staff (from the NSW Vending, Equipment Service and Finance teams) into an existing building at the CCA site at Northmead, Sydney, Designed Interiors undertook the task, alongside project managers GVA Grimley.

\_Staff-focus was crucial, and a working project team of personnel was formed. Bill Morakis from CCA explains: ‘It was vitally important that the new premises were designed around our people and their work functions based on feedback and in consultation with our employees’. As part of this development process, Schiavello’s Systems Furniture team created a desking prototype for assessment by the working project team.

\_Employees were asked to choose task chair fabric, ‘to give staff a sense of ownership and demonstrate people’s individuality. It looks fabulous — a sea of colour’, said Marianne Bokor from Designed Interiors.

\_Bringing the outside in was a feature successfully achieved by Designed Interiors, utilising natural light and picturesque views of Toongabbie Creek through the building’s expansive windows. Schiavello’s 1200 mm high System 45 dividing panels maintain privacy while allowing light and air circulation.

Green stripes of carpet in alternating widths continue the outdoors theme, creating movement and interest. These designs and silver laminate strips are extended up walls, ceilings, glass partitions and into meeting rooms and are combined with up-lighting to create a fun and interesting visual appeal. ‘We wanted to create an environment full of light. We were fortunate to have generous corridors and a large floor plan, so we used varied designs on all surfaces and areas to avoid any cold, empty space,’ Ms Bokor said.

\_Schiavello’s Elitone desking and System 45 workstations were selected for their numerous advantages. Systemet storage and Interpower softwiring are understated and stylish solutions to issues of wiring-camouflage and space saving. Ms Bokor elaborates, ‘We love Schiavello’s workstations. They are cost-effective, made in Australia and environmentally friendly. It’s important to us to use companies with these ethics. The usability of the workstations was also paramount; with height-adjustability and flexibility of accessories making them work so well.’

\_Jo Anne Harrison from GVA Grimley Project Managers said tight time constraints were a challenge for all parties: ‘The exemplary outcome of the project was its own reward. It is a representation of the ideal working relationship developed between us, the client, the designer and Schiavello.’





**Project Location**  
321 Ferntree Gully Road  
Mt Waverley  
Victoria

**Client**  
Alinta:  
Maria Pavlidis

**Design**  
Gray Puksand:  
Robert Puksand  
Paul de Podolinsky  
Ali Little  
Heidi Stowers  
Christina Lasota

**Schiavello Vic Systems**  
Stephen Rando  
Fabio Colonico  
Gareth Bennett

**Area**  
7500 m²

**Products**  
Elitone desking,  
System 55 panels,  
Interpower softwiring  
umbilicals, Systemet  
metal pedestals +  
accessories.

ALINTA SYSTEMS

Design inspiration stemming from Alinta’s values, products and services reflects a contemporary and forward-thinking organisation with belief in their accomplishments.

ENERGETIC CONNECTIONS

As a leading Australian energy company and supplier of high quality, reliable energy related products and infrastructure solutions, Alinta Vic required a fitout of the same high standard. And what the designers from Gray Puksand achieved is nothing short of an exceptional representation of the company that immerses employees in their philosophies on a daily basis. \_Gray Puksand’s Robert Puksand discusses the link between what Alinta represents and the resulting design: ‘The design of the fitout makes reference to the industrial origins of Alinta’s products. Abstracted industrial design elements are included with the chevron design of the glass walls referring to the tread detail on heavy equipment tyres. Feature screens in the workplace mimic industrial steel framing. [Way-finding] signage takes its lead from industrial safety signage.’ The bright primary colours through the workspace take their inspiration from the colours of industrial plants and equipment. \_The fully open workstation plan was embraced by Alinta. All staff and management are now easily approachable and the discourse is constant and uninhibited. Schiavello’s semi-transparent System 55 helped facilitate the open-plan objective. ‘The feature framed/mesh screens throughout the workplace help to provide privacy and denote shared workplace zones’ (Robert Puksand). Introducing Gray Puksand’s ‘office landscaping’, a contemporary and inspirational work space was created. Such features as bold colour choices and graphics, combined with a minimal palette of design elements provide

the amalgamation of stimulation and comfort. \_The balance between work and leisure for employees was an important consideration for Alinta’s Property Services Coordinator Maria Pavlidis. She reiterates the importance of openness in the plan, and of ‘time-out’ spaces for reinvigoration. ‘As a business we were out to achieve a friendly, relaxed atmosphere with plenty of breakout areas where people could easily walk away from their desks, have a cup of coffee and catch up with work mates. This was achieved successfully with all the help and expertise of the team from Schiavello.’ \_Along with System 55 panels, the complementary furniture supplied by Schiavello’s Systems Furniture team included Elitone desking and Systemet storage. Selected for their durability, elegant design and finish, along with the flexibility to tailor-make appearances and functions, Schiavello’s furniture will provide a long-term service, to Alinta’s employees. Robert Puksand praises Schiavello’s service; ‘Alinta required a cost effective solution for the site, which would also provide longevity and flexibility. The system installed by Schiavello satisfied all of these criteria.’ \_The promise of Schiavello’s service during and after the project’s completion was acknowledged by Maria Pavlidis: ‘Schiavello were not only at hand to give expertise and advice but are still at hand even when the project has been completed. We had to go back and add a few more desks recently and as promised on the day they delivered with the only standard they know – high quality and timeliness.’



1



2



3

- 1\_Open plan work area with Schiavello workstations comprising Elitone and System 55 translucent panel system, Systemet metal pedestals, paper tray accessories.
- 2\_Workstations showing System 55 panels and softwiring umbilicals.
- 3\_Elitone desking, custom-made function wall, System 55 panels, softwiring umbilicals.



**Project Location**  
Levels 16-18  
167 Macquarie Street  
Sydney

**Client**  
Gresham Partners:  
Tracey Broers

**Design**  
Quadrant Design:  
Guy de Compiegne

**Schiavello NSW Systems**  
Mark Keppie  
Sash Ristevski

**Area**  
2364 m²

**Products**  
Alto desking,  
Ultimet workstations,  
Interpower softwiring.

# LUSTROUS ENERGY

A 20 year working relationship between designer and client allows the openness and creative freedom that has resulted in superior design innovation. \_Gresham Partners and Guy de Compiegne of Quadrant Design have established a rapport producing some outstanding workplace designs; Gresham’s new Sydney office is no exception. Mr de Compiegne describes that, ‘after 20 years there is a sort of confidence that allows you to be outside the usual limits.’ \_Schiavello’s Systems Furniture team worked with de Compiegne to implement Gresham’s brief, with the association between Mr de Compiegne and Schiavello also proving complementary after a long-standing relationship in the industry. ‘Schiavello were chosen because they are famous for being on time and flexible.’ \_With the expertise of de Compiegne, Gresham Partners, an Australian-owned investment house, has created a working atmosphere that represents the company’s confidence, youth and vibrancy. The high-end clientele, along with staff that the company professes to be of the finest calibre, also played a key role in the motives behind design choices. Through deep, corporate colours and bold design statements, as well as three-quarters of one floor dedicated to meeting rooms, the esteem with which the VIP clients and staff are held is demonstrated clearly. De Compiegne says, ‘financial services is about engineering a complex but efficient structure for the clients and

this is similar to the designer’s creative process when he designs a specific working environment.’ He continues: ‘In the Gresham Partners fitout, the “engineering” aspect is a theme running through the entire project. This is particularly clear in the reception area with the custom-made brass light fittings and in the artwork specially commissioned by Gresham Partners to Sydney artist Susan Norrie’. \_Veneer products supplied by Schiavello juxtapose the rich green/blue carpet and walls, creating a lush workplace forest. The Alto, Ultimet and storage furniture and systems were used for their exemplary design and workmanship that is evident down to the joinery and profiles, fulfilling the fine attention to detail essential to the client. Schiavello’s commitment to thinking outside the typical realms and delivering solutions that tailor individual requirements was demonstrated, with alterations to furniture made at the designer’s request. De Compiegne explains: ‘They were prepared to change a system to accommodate what I wanted [combining the Ultimet screen system with Alto profile worktops]. It created a custom-made element to the design. They didn’t mind looking at things differently and adapted easily for this project.’ \_An elegant and streamlined workplace design, Gresham’s Sydney office is certain to impress clients and compel staff to perform to a standard equal to their surroundings.



1



2

1\_Alto desk with fine timber veneer detail.  
2\_Custom-made veneer fixed pedestal.  
3\_Ultimet workstation, custom-made veneer file units with veneer to front of desks.



3



**Project Location**  
Various metropolitan  
and regional retail  
branches

**Client**  
ANZ:  
Ari Athanasopoulos  
Anthony Shina  
CBA:  
Byron Williams  
CENTRELINK:  
Kym Lees  
Des Kingston  
MEDICARE AUSTRALIA

**Design**  
ANZ:  
Geyer Pty Ltd  
CBA:  
Numerous Designers  
CENTRELINK:  
Retail Environment  
Design  
Woodhead International  
MEDICARE AUSTRALIA:  
Interiors Australia  
Group

**Project Management**  
ANZ:  
Bovis Lend Lease:  
Greg McCourt  
Sergio Lupacchini  
CBA:  
Bovis Lend Lease:  
Greg McCourt  
Barry Steele  
Crosier Scott &  
Associates

**Schiavello Project  
Solutions (Medicare  
Australia)**  
Peter Thompson  
Charles Zammit  
Adam Terrill  
**Schiavello National  
Projects (Centrelink,  
CBA + ANZ)**  
Raffaele Tigani  
Robert Amorosi  
Aaron Scott  
Kara Taggert

**Schiavello Vic Systems**  
Arthur Salmon  
Kristian Missen  
David Tomassi  
Chris Nicholls



**RETAIL FEATURE**  
NATIONAL PROJECTS GROUP  
PROJECT SOLUTIONS  
SYSTEMS FURNITURE

**SCHIAVELLO CASE-STUDY**  
ANZ  
Centrelink  
Commonwealth Bank of  
Australia  
Medicare Australia

# RETAIL REVAMP

Traditionally a leading designer and manufacturer of furniture, products and interiors for workplace environments, 40 years in business has given Schiavello the experience to enter new territories. Commercial, hospitality, health care, high end residential and retail tenancies are among Schiavello’s capabilities. Such retail environments include the recent national upgrades of service providers Centrelink and Medicare Australia, and financial institutions ANZ and Commonwealth Bank of Australia (CBA). Schiavello has exercised their ability to coordinate large-scale projects nationally and overseas, and sets a significant standard for project management and product supply. \_From developing a brief to the completion of a project, Schiavello’s various departments undertake all tasks in the creation of retail spaces. These processes can include furniture supply and installation, interior fitout, joinery and project management. With staff input an important factor, Schiavello undertakes workshops and feedback opportunities, and the manufacture of prototypes. With CBA’s revitalisation of over 300 branches nationally, and ANZ’s branch expansion program and upgrade of more than 100 branches throughout Australia and the Asia-Pacific region, Schiavello was involved with employee workshops and feedback.

The prototypes that resulted included tailor-made solutions enabling specialised functionalities for banking counters and systems furniture. \_Exceeding the client’s expectations is a crucial element in Schiavello’s philosophy, and their long-standing relationships with designers and clients demonstrates this. These collaborative relationships can be attributed in part to Schiavello’s reputation as a solutions focused organisation. Schiavello’s Project Solutions team undertook weekend and evening work in order to complete signage and rebranding in 86 of Medicare Australia’s branches across four states simultaneously, reducing Medicare Australia’s impact on customers. This dedication was also shown in the CBA, Centrelink and ANZ projects with after-hours work a necessity. Offering creative solutions to challenges, Schiavello works closely with clients and designers to reach the best outcome for each individual case.



RETAIL FEATURE  
NATIONAL PROJECTS GROUP  
PROJECT SOLUTIONS  
SYSTEMS FURNITURE

**Project Location**  
Various metropolitan  
and regional retail  
branches

**Client**  
ANZ:  
Ari Athanasopoulos  
Anthony Shina  
CBA:  
Byron Williams  
CENTRELINK:  
Kym Lees  
Des Kingston

MEDICARE AUSTRALIA

**Design**  
ANZ:  
Geyer Pty Ltd  
CBA:  
Numerous Designers  
CENTRELINK:  
Retail Environment  
Design  
Woodhead International  
MEDICARE AUSTRALIA:  
Interiors Australia  
Group

**Project Management**  
ANZ:  
Bovis Lend Lease:  
Greg McCourt  
Sergio Lupacchini  
CBA:  
Bovis Lend Lease:  
Greg McCourt  
Barry Steele

Crosier Scott &  
Associates

**Schiavello Project  
Solutions (Medicare  
Australia)**  
Peter Thompson  
Charles Zammit  
Adam Terrill

**Schiavello National  
Projects (Centrelink,  
CBA + ANZ)**  
Raffaele Tigani  
Robert Amorosi  
Aaron Scott  
Kara Taggart

**Schiavello Vic Systems**  
Arthur Salmon  
Kristian Missen  
David Tomassi  
Chris Nicholls

Schiavello’s highly capable product design and engineering team are often involved in the design development of unique components and designs for projects. CBA and ANZ are two examples where the engineering team were involved to develop the technical design for the front of house service counters, ensuring the design met client performance requirements and delivered cost savings through efficient production and installation. The flat-packing and modular nature of branch components ordered for CBA and ANZ allowed for bulk procurement, with the sporadic orders of large quantities. This flat-pack element also enabled reduced costs and time, with both transportation and assembly on-site.

The most sophisticated plant of its kind in Australia, Schiavello’s manufacturing operation is continuing to grow and produce sizeable quantities of high quality, environmentally sustainable products. Producing systems furniture, seating, partitions, softwiring and accessories with advanced computerised machinery — custom-made pieces flow efficiently from design to production. With an expanding graphics and signage capability, Schiavello are positioned well to provide complete engineered solutions for retail spaces on a national scale.

- 1\_ ANZ Chifley, NSW  
Bank teller counters showing Corian solid surface and poly-carb acrylic glazing, M7 Humanscale monitor arms and QED work environment in background.
- 2\_ ANZ Chifley, NSW  
Workstations and client meeting areas using MK10 curved partitions custom-built by Schiavello, QED desking.
- 3\_ CBA Highpoint, Vic  
Information desk showing Corian bench tops and pre-laminated veneer panelling.
- 4\_ Medicare Australia Highpoint, Vic  
Customer-service counters featuring new Family Assistance signage.
- 5\_ Medicare Australia Highpoint, Vic  
External marketing signage showing new Family Assistance upgrade, with internal corporate blades at entrance.
- 6\_ Centrelink Flemington, Vic  
Marketing material with stands, custom-made using System 45 detail, with large promotional banners, reception counter and custom-built pigeon hole storage in background.





Products and services

**Project Location**  
Various metropolitan  
and regional retail  
branches

**Client**  
ANZ:  
Ari Athanasopoulos  
Anthony Shina  
CBA:  
Byron Williams  
CENTRELINK:  
Kym Lees  
Des Kingston

MEDICARE AUSTRALIA

**Design**  
ANZ:  
Geyer Pty Ltd  
CBA:  
Numerous Designers  
CENTRELINK:  
Retail Environment  
Design  
Woodhead International

MEDICARE AUSTRALIA:  
Interiors Australia  
Group

**Project Management**  
ANZ:  
Bovis Lend Lease:  
Greg McCourt  
Sergio Lupacchini

CBA:  
Bovis Lend Lease:  
Greg McCourt  
Barry Steele

Crosier Scott &  
Associates

**Schiavello Project  
Solutions (Medicare  
Australia)**  
Peter Thompson  
Charles Zammit  
Adam Terrill

**Schiavello National  
Projects (Centrelink,  
CBA + ANZ)**  
Raffaele Tigani  
Robert Amorosi  
Aaron Scott  
Kara Taggart

**Schiavello Vic Systems**  
Arthur Salmon  
Kristian Missen  
David Tomassi  
Chris Nicholls

RETAIL FEATURE  
NATIONAL PROJECTS GROUP  
PROJECT SOLUTIONS  
SYSTEMS FURNITURE

**ANZ**  
Tellers’ desks with Corian solid surfaces  
and Ultimet understructure;  
Sales desks with QED desking and  
accessories;  
Custom-made mobile pedestals and  
storage;  
MK10 sales screens (shown in custom-  
made curved form, also supplied in  
standard straight style);  
Humanscale M7 monitor arms used in all  
customer-service desks and workstations;  
Custom-made merchandising including  
shelves, voucher-holders;  
Interpower umbilicals and MK10 vertical  
duct wiring solutions applied throughout.

**CBA**  
Teller and customer-service (information)  
desks with Corian solid surfaces, veneer  
faces and Ultimet desking understructure;  
Back-of-house working environment  
includes Sesto and Ultimet workstations  
with custom-made storage kitchenettes  
in standard size using Schiavello products  
and joinery, identical in all branches to  
ensure ease of installation and  
consistency;  
Writing slopes manufactured with  
Corian tops.

**Centrelink**  
Complete fitout and furniture supplied to  
all three zones: front of house, interview  
area and back of house;  
Reception counter joinery (MDF powder  
coat technology applied to this and all  
working surfaces);  
M7 Humanscale monitor arms used across  
all three zones; telephone stands and  
writing slopes manufactured by Schiavello;  
Marketing displays: Merchandising stands  
designed using System 45 partitions and  
metal base, brochure-holders custom-  
made (pictures 6, 7+9);

Interview area using Ultimet desking,  
custom-built tambour door units and  
storage with Interstat 90 panels;  
Back of house working environment using  
the same products as interview area, with  
workstation applications;

Ecomatic chairs, Plaza chairs, Belina  
chairs utilised in all zones.

**Medicare Australia**  
Project management of signage solutions:  
Perspex stand-alone blades, internal and  
external corporate upgrade.



7

**7+9\_Centrelink Flemington, Vic**  
Marketing material custom-designed by  
Schiavello: Brochure holders and signage  
using System 45 partition details and  
metal base. Reception counter,  
Humanscale M7 monitor arms and  
custom-made pigeon holes in  
background.  
**8\_ANZ Chifley, NSW**  
Workstation with Unimet desking, QED  
paper rails with trays and custom-made  
voucher holders, Series 3 pedestal and  
Humanscale M7 monitor arm.  
**9\_Centrelink Flemington, Vic**  
As per image 7.  
**10\_CBA Highpoint, Vic**  
Bank teller counters with Corian tops,  
poly-carb acrylic and pre-laminated  
timber veneer face.



8



9



10



SCHIAVELLO UPDATE

101 CHAIR



Helen Kontouris, a young Australian-born designer whose work is celebrated on an international scale, created the innovative 101 Chair – where design meets sculpture in an appetising intersection of fun and functionality. Proudly and exclusively produced by Schiavello to the worldwide market, 101 is a product of Helen's inspired ideas.

\_With the desire to make every individual who encounters the 101 chair 'indulge in their own responsiveness to it', Helen has designed the chair suggesting interaction and playfulness.

\_With its ribbon-like quality, the chair encapsulates both ingenious design and precise engineering. Using moulded fibreglass to embody the singular twisting line into a comfortable and practical shape, the chair is fabric-upholstered, with a striking range of colour choices.

A feature admirable as a centrepiece, with the added enticement of a functioning seat, 101 is the ideal talking piece.

\_Helen's designs continually expand possibilities in materials, manufacturing methods and innovation through technology. From furniture to interiors and products, her designs provide enjoyment and emotion and create personal experiences. Schiavello's ongoing relationship with Helen Kontouris continually develops future products and ideas. Watch this space!

HEDGE

'My intention for Hedge is to provoke both an emotional and tangible connection between the user and the piece by combining aesthetic personality with function. Hedge accommodates for every user differently enhancing the relaxation experience with a sense of tailored security' (Oliver Field, designer).

\_Experimenting with unconventional forms and ideas, Oliver Field from Schiavello's design team has created the Hedge seating range. A surprising and fascinating product befitting intimate residential interiors through to plush commercial environments, Hedge encourages participation and exploration.

\_Through physical interaction and form manipulation Hedge can be used for napping, relaxing or waiting; its undulating form accommodating all shapes and sizes. Combining physicality and interaction, Hedge creates a fascinating talking point.

\_Hedge's complex hidden frame design integrates several key Schiavello manufacturing processes facilitating linear duplication. Hedge uses natural fibres and has been designed to align with Schiavello's dedicated environmental policies.

\_The Hedge series also includes a nestling table in aluminium powder coat or mirror polish. The nestling tables can be used as work platforms for informal work environments, removable coffee tables or dividers.

\_Designed in an array of colours and textures, Hedge can be custom-made with no length restrictions, to transform the nature of any space. The following four lengths are available as a basis for the standard Hedge range:

- Single seat 1060 mm (5 loops)
- Two-person seat or single lounge 1908 mm (9 loops)
- Seat or lounge for linear spaces 2756 mm (13 loops)
- Seat or lounge for linear spaces 3392 mm (16 loops)



TANGIER

A modular seating and work platform designed for informal, portable spaces, Tangier is a seamless, practical concept by Schiavello's Ivan Woods. New communication zones have arisen in workplaces, catering for various levels of interaction from communal breakout zones and casual meetings to individual temporary activity pods for wireless working. Tangier sets the scene for this space and can be rapidly re-configured to suit any informal work scenario. Its lightweight form is ideal for ease of arrangement.



'I wanted a product to address informal seating and working requirements in communal spaces.

\_Its uniquely-shaped ends allow it to be laid out in a linear, curvilinear or organic manner. It has a dual role of seating and work surface' (Ivan Woods).

\_Made from 100 per cent recyclable polypropylene and available in a range of colours, Tangier's flexibility and functionality in communication zones make it a must for professional environments.



TORO

Toro Charges the Furniture World

Schiavello introduces Toro, an elegant timber chair with minimalist appeal for commercial, domestic or hospitality use. Designed by Ivan Woods as a versatile piece, Toro is appropriate as a side chair, in visitor or waiting rooms, dining or meeting environments.

\_I wanted to design a multi-purpose commercial timber chair that would have a very restrained aesthetic' (Ivan Woods).

\_Toro's name is aptly derived from the Spanish word for bull.

Its angled 'hind' legs with wide stance combine with a single solid timber back. An integrated handle within the back support enhances Toro's functionality and understated style.

\_Made of Victorian Ash, Toro is available in natural timber, stained or painted finishes. Configured with or without arms, it is also available with a leather finish seat.

\_Toro's personality is individual and robust, and makes an attractive design statement in a myriad of scenarios.





SCHIAVELLO UPDATE



SCHIAVELLO CORPORATE SIGNAGE

Greener Signs Ahead for Sensis

Sensis has reduced up to 30 per cent of its environmental impact in their customised signage by sourcing Schiavello to design and produce sustainable and innovative solutions. A continuously evolving organisation, Sensis required flexibility in its wayfinding system. The replacement of existing signage however was a costly and environmentally impactful exercise. The challenge was met through Schiavello’s redesign, incorporating the location-marker as an interchangeable, magnetic plate. MDF powder coat technology was employed, significantly diminishing toxic emissions, along with E0 board, reducing formaldehyde emissions by 70 per cent. With the added advantage of durability and modularity of design, churn is notably decreased, whilst offering a significant cost saving. Robert De Marco from Schiavello Signage elaborates: ‘Through minor cosmetic changes and by incorporating our environmental procedures, we were able to deliver a flexible system, in keeping with the design. Not only did this cosmetic change offer a significant cost saving, it has been shown to reduce life cycle environmental impact when compared to the existing materials used.’

Sensis’ Theo Vagias says: ‘Sensis is committed to sound environmental management, product stewardship and empowering its people to minimise our environmental footprint. We selected Schiavello to assist with our signage requirements in recognition of their ability to meet our needs and provide considerable reduction of environmental impacts, compared with the previous design.’ Schiavello is currently working in collaboration with Sensis on various signage applications, delivering new alternatives and initiatives for the future of the company. The commitment Schiavello shows to sustainable solutions is evident in this and all other projects currently being undertaken in all divisions.

For further information, please contact  
Robert De Marco  
T: 03 9330 8745  
rdemarco@schiaavello.com

SCHIAVELLO HOSPITAL SOLUTIONS

Schiavello Hospital Solutions (SHS) was formed in 2006 as a strategic joint venture between Schiavello and USA based company Strategic Hospital Resources Inc. Our team of experienced, clinically-trained planners serve as the liaison between the architect, hospital administration, clinical users, and medical equipment vendors to provide clear and defined direction regarding user requirements and operational facility design. Based in Melbourne, the company provides clinical consulting and medical equipment planning services throughout Australia, Europe and the Middle East. Our team of experienced and dedicated professionals understand construction, procurement, project management and the deeper intricacies of the private and public hospital sector. Our directors’ experience alone includes an impressive 25 years of medical design and nursing practice, 40 years of project management and 30 years clinical experience. It offers clients a unique service. As the first operation of its kind in Australia, SHS has the skill and knowledge to internally coordinate the entire process from functional brief to project completion to provide an on budget and on time outcome. As an added benefit SHS offers its

clients an ongoing system of future planning to improve organisational sustainability as well as patient, staff and physician satisfaction.

An extensive listing of the projects undertaken can be viewed on SHS website.

For more information, please contact  
Peter Thompson  
Manager  
T 03 9674 1581  
pthompson@shschiavello.com

Ray Bielby  
Business Development  
T 03 9674 1582  
rbielby@schiaavello.com

or visit [www.schiaavello.com.au/shs](http://www.schiaavello.com.au/shs)

I.BOX

The i.box has been appearing in some surprising and exciting incarnations since its inception in 2006. Manufactured and designed by Schiavello in Australia, i.box personifies all that is modern in today’s workplace. The i.box is a 360 degree panoramic, transparent structure; enhancing the openness and exposure to light that is becoming so necessary in progressive organisations. Its subtle design makes it suitable for any area, as a demountable, temporary or permanent structure. With choice of either free-standing 2400 mm or full height design, i.box is an unobtrusive and versatile structure. Designers and workplaces are discovering the i.box’s flexibility and how it can be personalised to suit any environment. Through the application of coloured, tinted, graphic, patterned and translucent film to the glass panels, and with the innovative use of furniture, lighting and accessories, the design potential is limitless. Schiavello’s Melbourne Southbank showroom displays just one example of i.box’s capabilities. A luxurious waiting area and meeting space has been created to make a lasting impression. Designed by Ninotschka Titchkosky from Bligh Voller, these interiors have a rich and luscious feel. The Kayt seating range was employed in deeply coloured, textured and patterned upholstery. Kayt rest coffee table and lounge coffee table are modern accompaniments. With touches of extravagant light fittings and vertical decorative blinds, the affect is a dramatic, completely distinctive space within the showroom.

Just some of i.box’s possibilities include the application of:

- Offices
- Waiting areas
- Meetings/conferences
- Training/workshops
- Think tanks
- Libraries
- Quiet spaces
- Presentation rooms
- Product showcase (furniture, cars)
- Coffee bar/zones
- Internet hotspots (public spaces)
- ‘Pop-up’ retailing



SCHIAVELLO ENVIRONMENTAL RATING TOOL

Since 1997 Schiavello has led the Australian furniture industry in the development of environmental practices. With the recent creation of their own Environmental Rating Tool (ERT), Schiavello furthers their ability to measure and understand the environmental impact of their products. Michael Pitcher, Schiavello’s Environmental Coordinator explains the technical aspects of ERT: ‘This model addresses important environmental elements which go beyond both the current Green Star materials calculator and the Good Environmental Choice Australia (GECA) standard. Performance on each element is scored from one to three, and the total performance is then expressed as a percentage of the maximum.’

The following 16 detailed criteria are studied and assessed for the final result:

- Manufacturing process
- Material source – renewable
- Material source – non-renewable

- Recycled material content
- Embodied energy
- Location of production (transportation)
- Workstation mass intensity
- Indoor environmental quality (IEQ)
- Ozone-depleting or Greenhouse emissions
- Re-useable or repairable
- Recyclable
- Disassembly
- Modularity
- Take back (manufacturer’s commitment)
- Packaging
- Durability (manufacturer’s warranty)

Schiavello’s commitment to the environment is uncompromising and now extends to offering clients and designers transparent and insightful information, offering a more comprehensive framework to make informed and sustainable choices.

For further information, please visit our website: [www.schiaavello.com/ert](http://www.schiaavello.com/ert)



