

Toku



A symbol for Harmony

Toku is a collection of benches and ottomans that supports the evolving workplace. Balance ensures unique tasks and working styles are considered and ultimately encourages harmonious places for people to come together and connect.

schiaavello

Contents

The future of work
5 — 6

Space is the place
7 — 8

**Different strokes for
different folks**
9 — 10

**Balance is the key
to harmony**
13 — 14

Let's talk
17 — 18

**Toku is for the
entire team**
19 — 20

The Toku ensemble
21 — 22

Designer:
Gavin Harris
25 — 26

ColourLab finishes
29 — 37

Specifications
39 — 41

Configuration examples
42

**Change is
the law of life.
And those who only
look to the past or
present are certain
to miss the future.**

—

John F. Kennedy

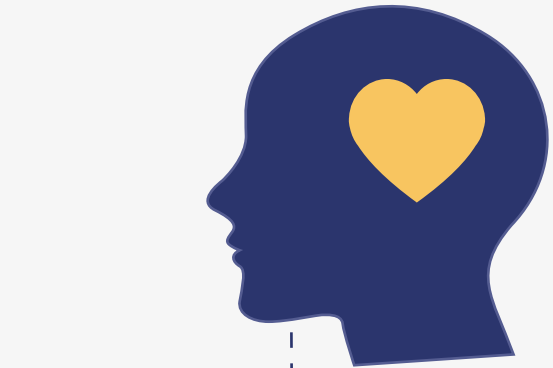
The future of work

The future workplace will see a generational shift, with Millennials (Gen Y) predicted to make up ¾ of the workforce in the next decade. As the workplace evolves, organisations will learn and adapt to their diverse worker types and continually improve and refine unique workspaces that cater to new ways of working.

Prevalent in the future workplace, and a direct outcome of the growing number of Millennials, is the increasing blur between our personal life and work life, shifting from the notion of ‘work/life balance’ to ‘work/life integration’. Millennials are

already initiating and adapting to this reality. They’re on social media talking with friends at work and answering e-mails when they leave the office.

Flexibility in the workplace is quickly becoming a key factor of employee career decisions, with 36% considering leaving their job due to lack of flexibility. Today, 70% of the total white collar workforce is under the age of 40. This young workforce has shown that 9 out of 10 employees admit their attitude to work is heavily impacted by the quality of their physical environment.



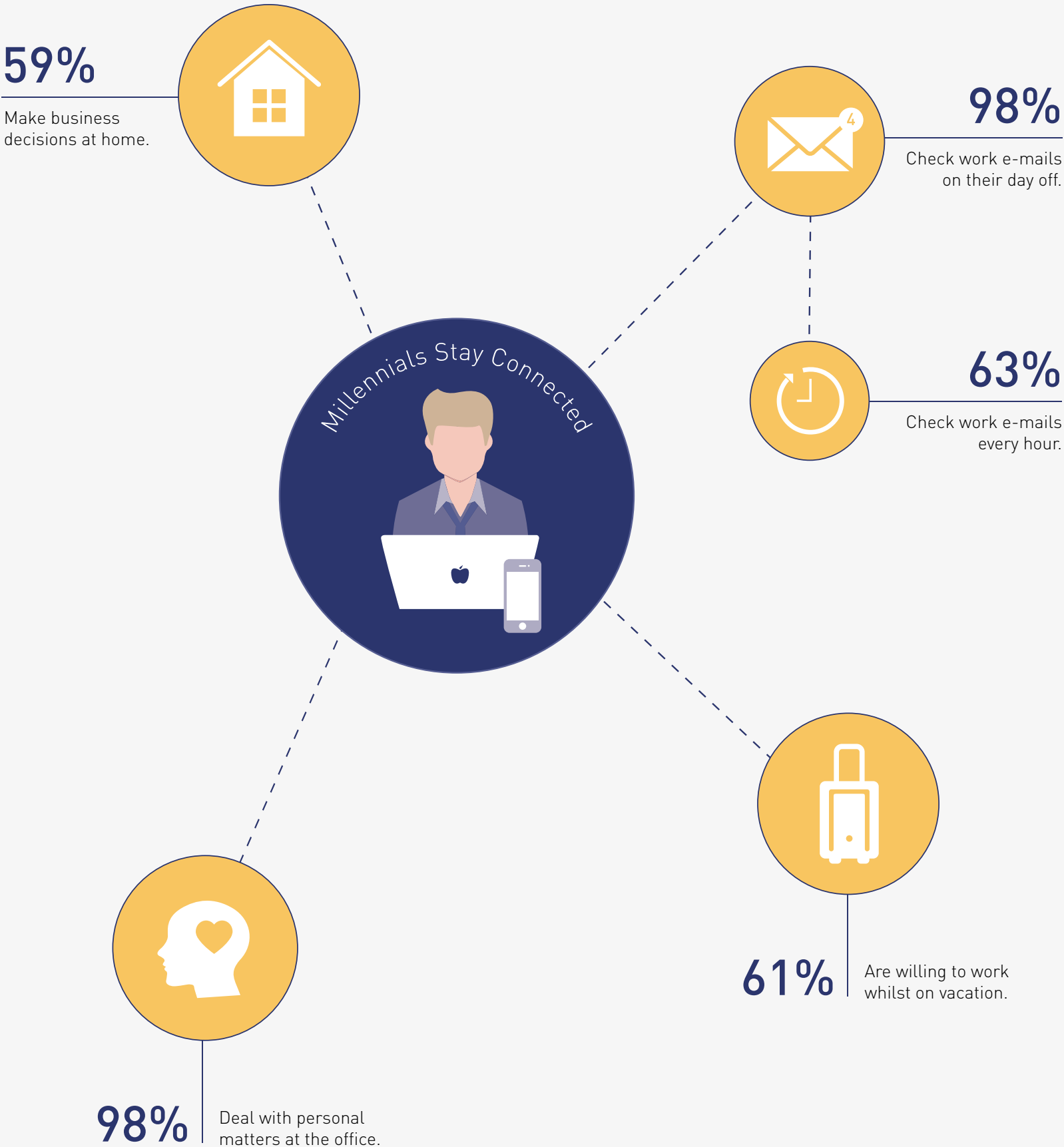
77%

Say personal values influence their work decisions.



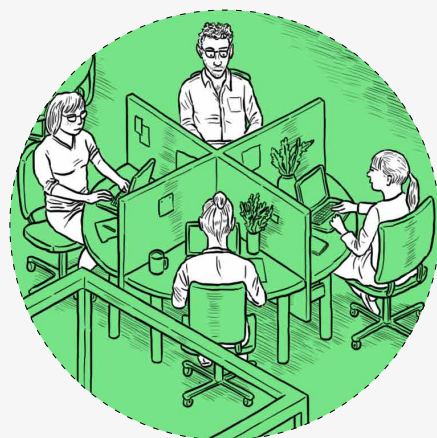
56%

Say personal social networks influence their work behaviour.



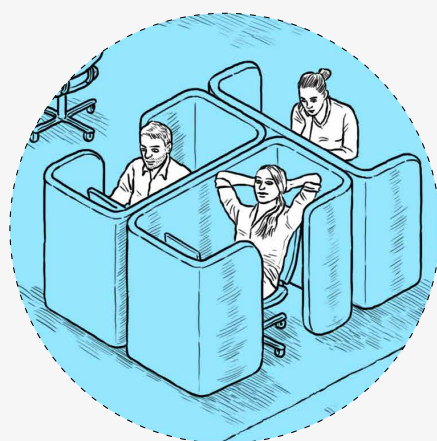
Space is the place

Resident Spaces



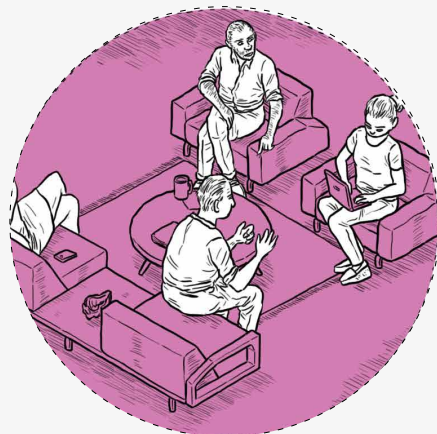
A home in the office. A space where storage and personal items are kept and individual work points and tools are defined. Supporting independent and structured work, it is important for workers to feel they have privacy and control over intrusions and distractions. A sense of territory is associated with a feeling of ownership and belonging to this place.

Retreat Spaces



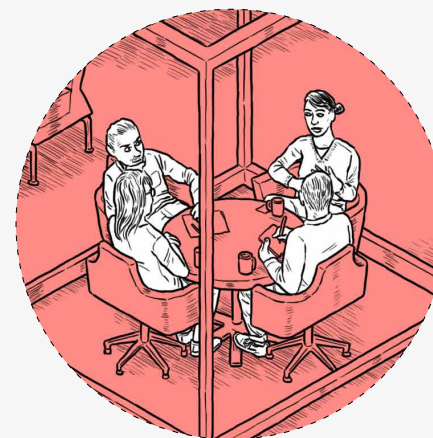
A refuge away from the action in order to focus, relax, reflect or rejuvenate. Creating a safe place for spontaneous and personal moments, this is an area that allows confidential discussions and focused work as well as opportunity to draw back for individual quiet time to slow down, concentrate and recap. Greatly utilised by individuals who are not assigned a work point and arrive at the workplace to connect and recap or focus.

Community Spaces



A collective space that links people together, supporting their connectivity and relationship building. Often inspiring and conversational, this space supports semi-formal or spontaneous interaction. A place for co-workers to have lunch or a coffee catch up and to connect during serendipitous moments. A place for teams to network or just to socialise.

Conference Spaces



A space for collective, structured interactions with an objective in mind. Supporting strategic and planned work, this space supports collaboration and confidential discussions. Teams gathering for presentations share this area to learn and interact physically and virtually. These spaces can be flexible to accommodate diverse gatherings of teams.

Transitional Spaces



These are circulation spaces including stairs and corridors as well as areas that house shared areas such as team storage units and office utilities. One objective of workplace design is to activate contact and information exchange by optimising the chances of people meeting who do not see each other regularly. These serendipitous places allow for impromptu moments to meet and converse as people roam.

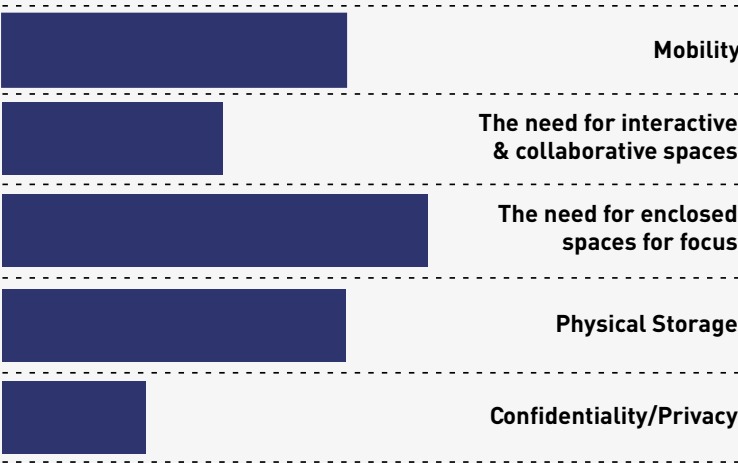
Anywhere Spaces



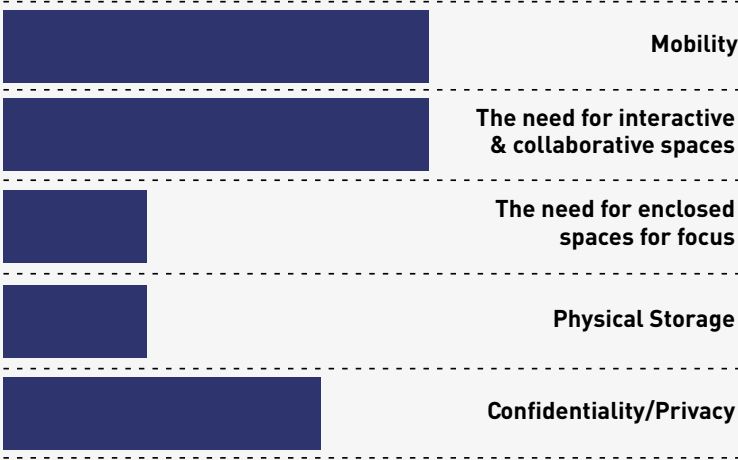
A space to connect with work outside of the office. These life environments include home or a café and transient spaces such as airport lounges, hotels and lobbies. These places promote co-working with diverse people and minds.

Different strokes for different folks

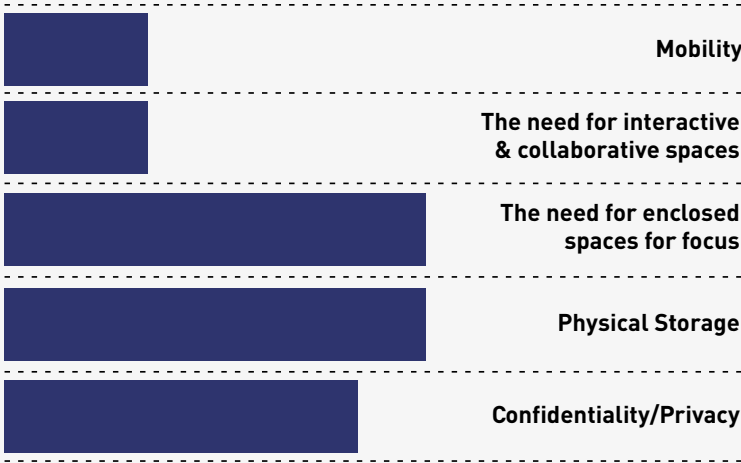
Linker



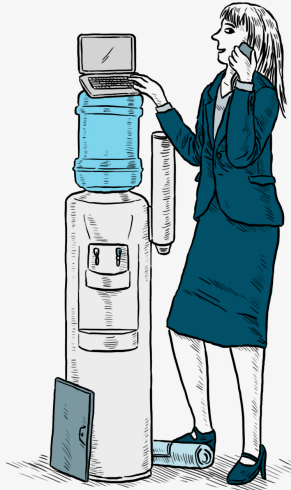
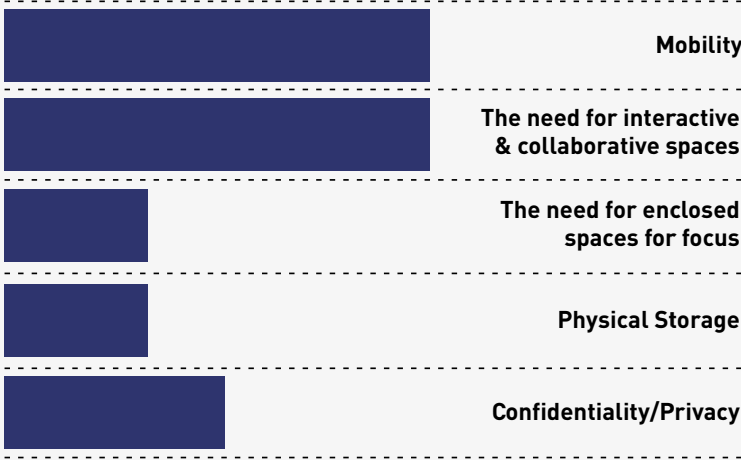
Networker



Nester



Roamer

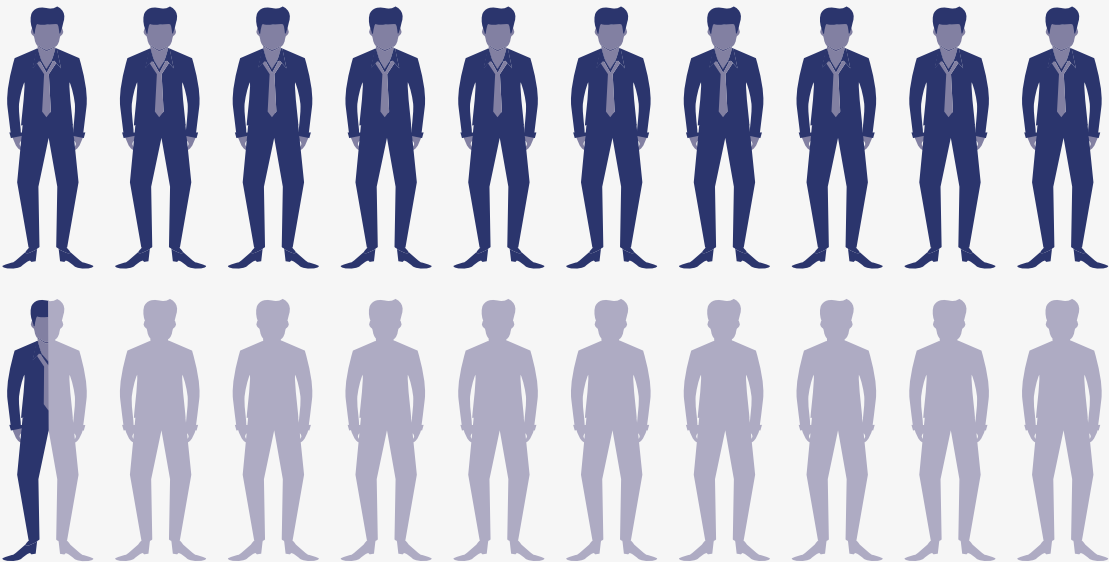


**Create balance;
create harmony**

Balance is the key to harmony

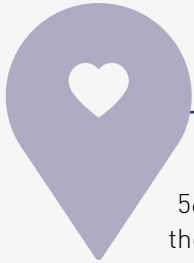
Creating spaces that encourage collaborative interactions will continue to be a priority for many organisations in the future workplace. However, creating spaces that provide balance is the key to creating a harmonious work environment. The workplace needs to offer a balance in spaces in order to support those who want to connect and collaborate, whilst simultaneously offering spaces for retreat and reflection.

By providing balance, each employee has greater choice and flexibility, resulting in improved comfort levels and reduced physical and psychological stress levels. Prioritising balance within workspaces will invariably improve physical and mental health.



68%

Interaction
Collaboration is important and our results say that 68% of people get energy from other people at work.



56%

Convenience
56% would prefer to sit next to someone they have a friendship with; relationships remain important in future workspaces.



Privacy
37% say that they need a lot of privacy to focus at work.



73%

Reflection
73% say they make better decisions when they have more time to think.

“Providing a balance in the physical workspace offers employees greater choice and flexibility”
- Ketí Malkoski

Introducing Toku

Let's talk!

Named after the Japanese word for 'talk', Toku inspires people to connect, to converse, and to collaborate. Evoking a sense of community, the Toku collection actively shapes perceptions of place from 'me' to 'we' and provides alternative spaces within the workplace for teams, clients and friends to come together.



Toku is for the entire team

Constantly evolving work landscapes and the desire for multifunctional furniture solutions has led to an increase in organisations adopting an agile workplace philosophy. Toku empowers people with the autonomy to choose the place they need, enabling them to fulfill their various tasks while embracing their diverse working styles. A purpose-driven collection, Toku creates balance in environments that require diversity. Toku removes the need to be bound to a designated work point, facilitating spaces for privacy and focus, communication and collaboration.



The Toku ensemble

Toku’s ensemble of familiar furnishings creates dynamic spaces in a variety of environments. The ottomans are geometric in shape and come in single, double or four-seat options. Timber backrests are available with double and four-seater ottomans, with a choice of either a half or full back cushion pad. Featuring a vast selection of upholstery colours, Toku Ottomans are infinite in their visual potential. Light and easy to manoeuvre, Toku Screens enable privacy and come fully upholstered in a variety of textural finishes. A range of tables in various shapes and sizes complete the ensemble and come in either timber or fine metal finishes.



Single Toku Ottoman.

Toku Capsule High Table.

Toku Capsule Low Table.

Four-seat Toku Bench with timber backrest and Toku cushion and full back pad.

Toku Round Table.

Toku Mesh Screen.

Double-seat Toku Bench with timber backrest and Toku cushion and full back pad.



GAVIN HARRIS

Sydney-based Gavin Harris is a creative and technical interior designer with a passion for product design.

After studying a bachelors in applied science – built environment and a graduate diploma in interior design at Queensland University of Technology, Gavin has worked 30 years in the industry. He has become renowned for his use of clean lines and circular forms, as well as his unique products that trigger positive reactions and an element of surprise.

“I find inspiration in many places, such as film, music, art, science, and everyday conversations,” Gavin says. The different human responses that occur when interacting with functional objects, however, is invariably his greatest muse. He believes in the traditional role of the designer and the different elements they contribute to a project – from the architecture and graphic treatment to the furniture and various accessories.

Gavin’s extensive knowledge of interior and industrial design has seen him produce significant workplace and hospitality projects both locally in Australia, and internationally in Asia, Europe and Africa. He has also won an IF Award for his Takushi table.





ColourLab

Schiavello’s innovative ColourLab brings a considered and cohesive palette of finishes to working and living spaces. Curated by Giulio Ridolfo and developed by Schiavello, the palette beautifully balances colour, texture and layering across a variety of materials.

METAL POWDER COAT

METAL POWDER COAT / Category 1

Strata

• ‡

Parchment

‡

Obsidian Glass

•

Black

• ‡

METAL POWDER COAT / Category 2

Ash

•

Parchment

•

Obsidian Glass

‡

Stone Grey

• ‡

Silk Grey

•

Cement Grey

•

Orange Brown

•

Grey Beige

•

Oxide Red

•

Signal Brown

•

Blush

•

Pale Green

•

Steel Blue

•

Gentian Blue

•

Fir Green

•

Emerald Green

•

METAL POWDER COAT / Category 3

Colza Yellow

•

Sulfur Yellow

•

Ruby Red

•

Traffic Red

•

FINISH

- Satin
- ‡ Texture

TIMBER NATURAL

Species

Oak

Applied finishes

Limewood

Walnut Bianco

Walnut Milano

TIMBER PAINT

Ash

Strata

Parchment

Obsidian Glass

Black

Stone Grey

Silk Grey

Cement Grey

Grey Beige

Oxide Red

Signal Brown

Orange Brown

Pale Green

Emerald Green

Fir Green

Ruby Red

Traffic Red

Blush

Colza Yellow

Sulfur Yellow

Steel Blue

Gentian Blue

TIMBER WASH

Ash

Strata

Parchment

Obsidian Glass

Black

Stone Grey

Silk Grey

Cement Grey

Grey Beige

Oxide Red

Signal Brown

Orange Brown

Pale Green

Emerald Green

Fir Green

Ruby Red

Traffic Red

Blush

Colza Yellow

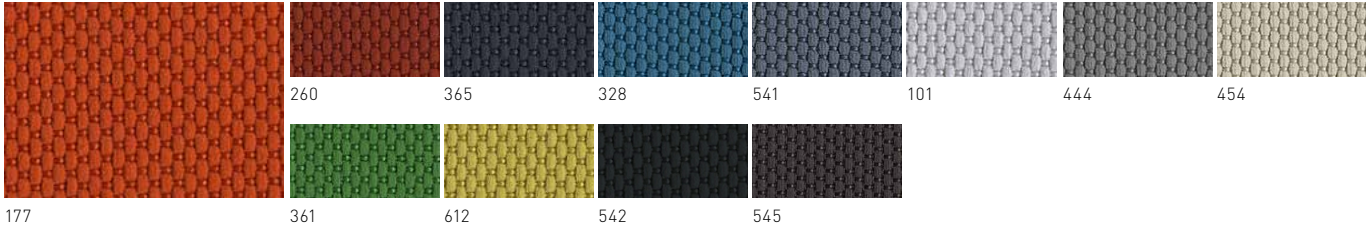
Sulfur Yellow

Steel Blue

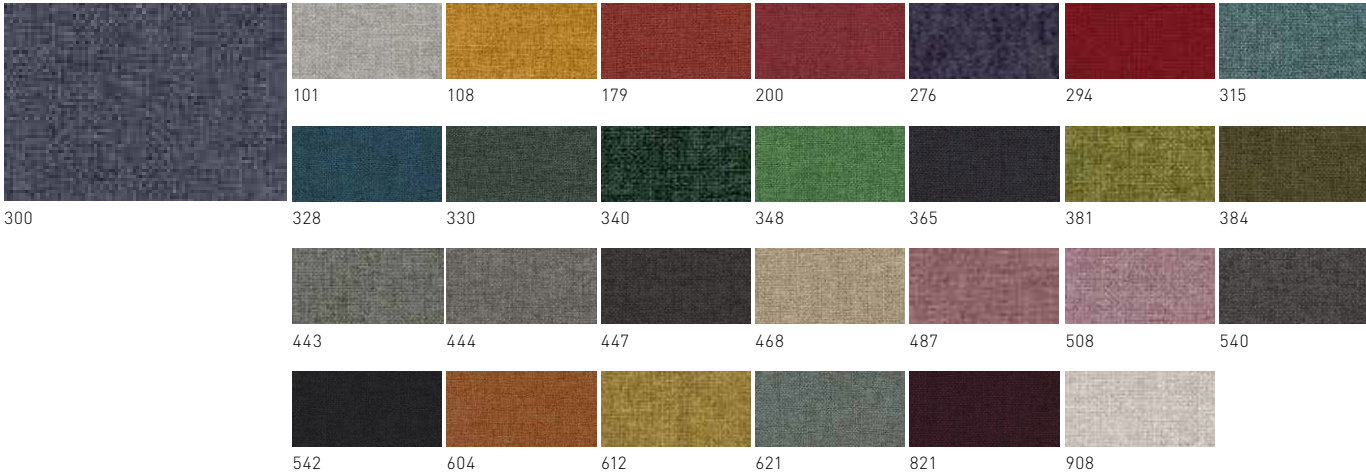
Gentian Blue

FABRIC

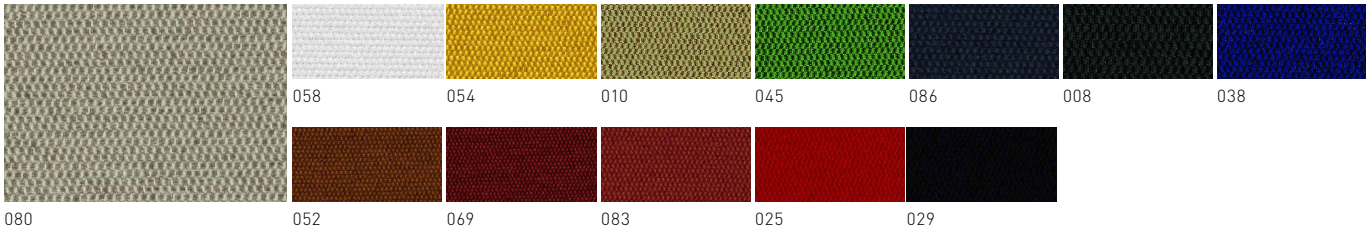
EDGE / Category 1



FOCUS / Category 1



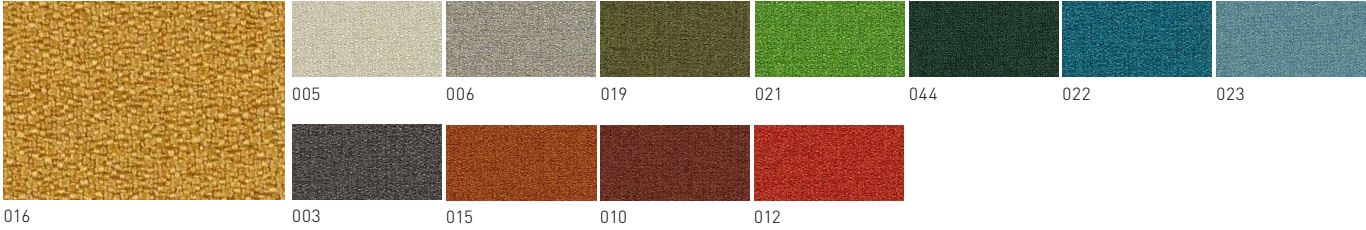
MESSENGER / Category 1



CATEGORY 1

Edge, Focus
& Messenger

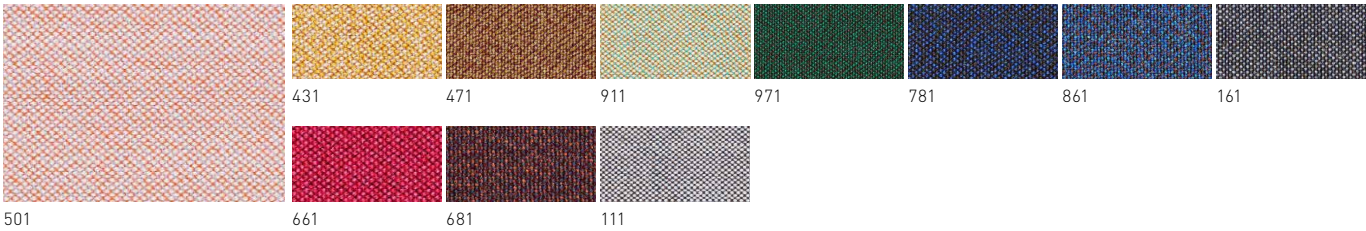
MANNER / Category 2



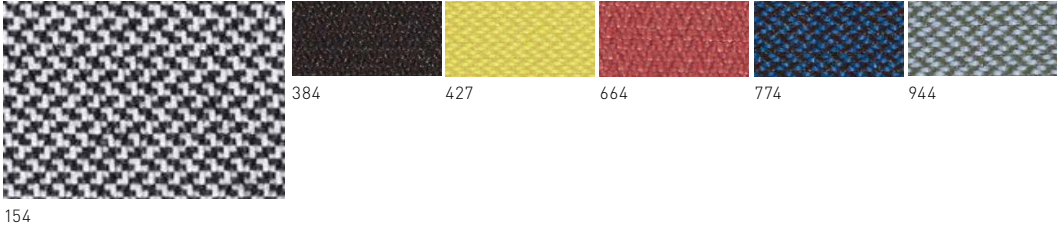
METRIC / Category 2



ATLAS / Category 3



REVIVE 1 / Category 3



CATEGORY 2

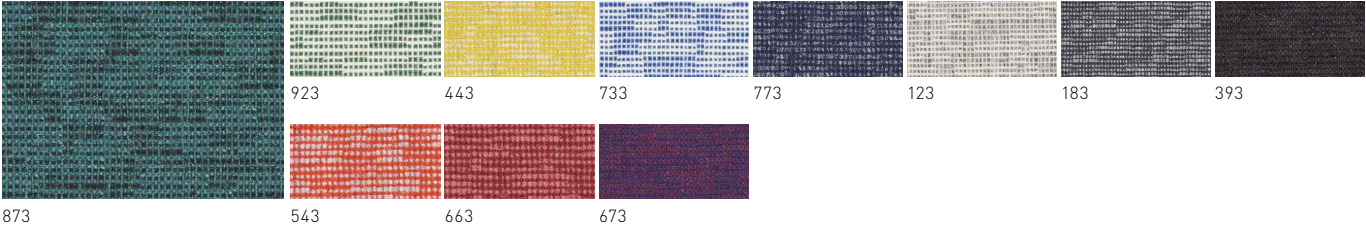
Manner & Metric

CATEGORY 3

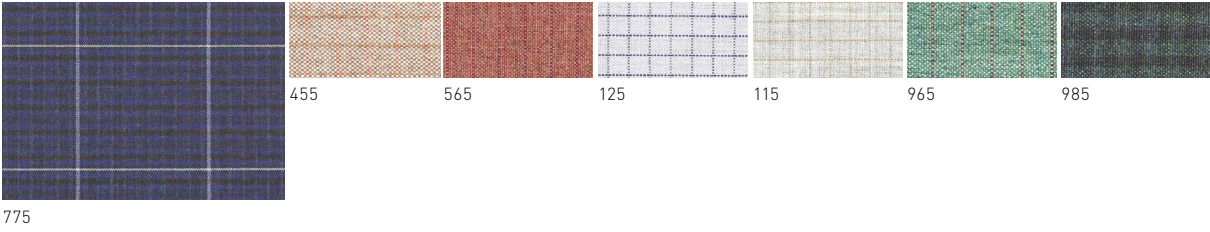
Atlas & Revive 1

CATEGORY 4
Glow, Recheck,
Remix 3 & Rime

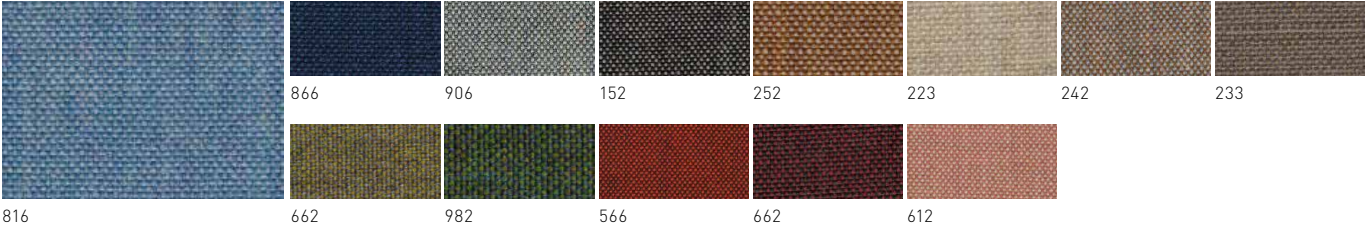
GLOW / Category 4



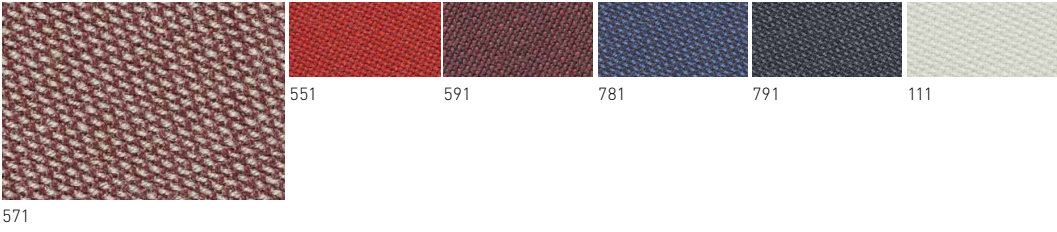
RECHECK / Category 4



REMIX 3 / Category 4



RIME / Category 4

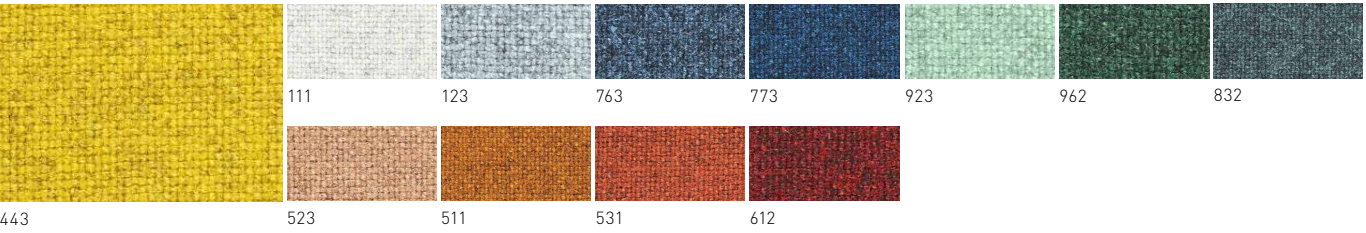


CATEGORY 5
Steelcut Trio 3
& Tonica 2

STEELCUT TRIO 3 / Category 5

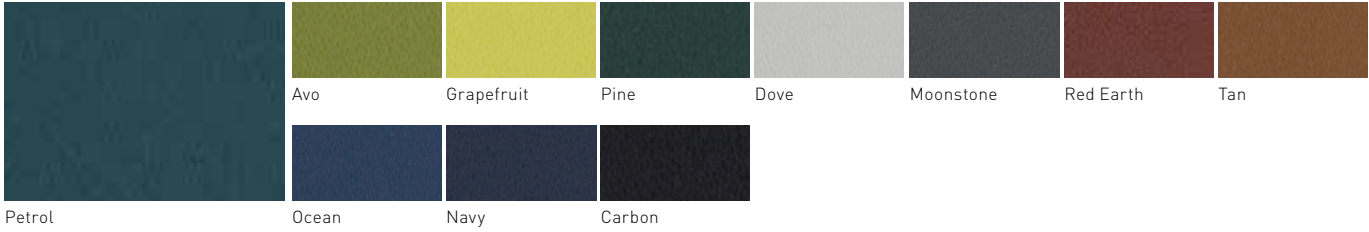


TONICA 2 / Category 5

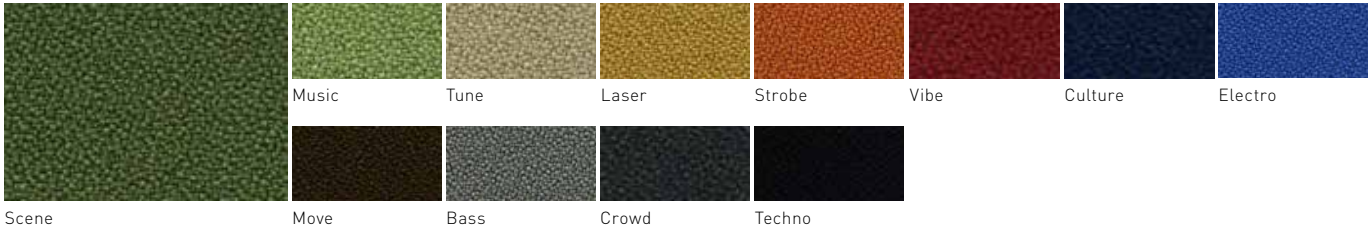


HEALTHCARE
FABRIC

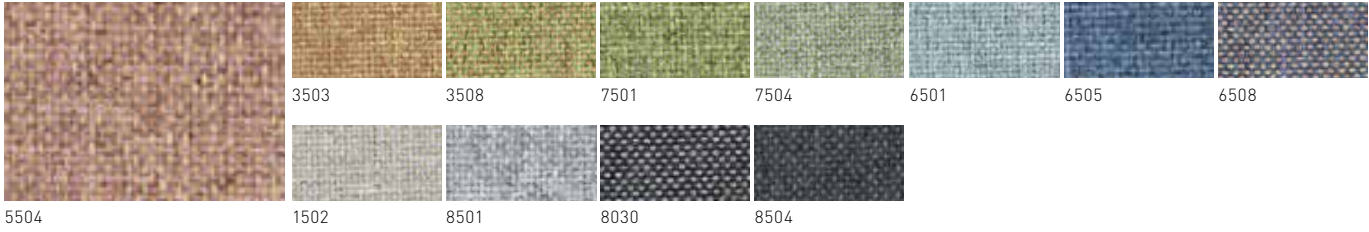
SILK / Category 1.5



RAVE / Category 2



TRIESTE / Category 2.5



CATEGORY 1.5
Silk

CATEGORY 2
Rave

CATEGORY 2.5
Trieste

LEATHER

METADOR / Category 2



MEDICI / Category 3



HEIRLOOM / Category 4



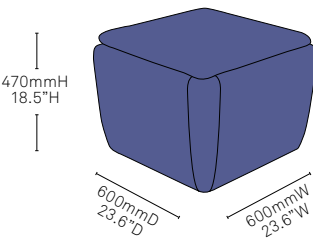
CATEGORY 2
Metador

CATEGORY 3
Medici

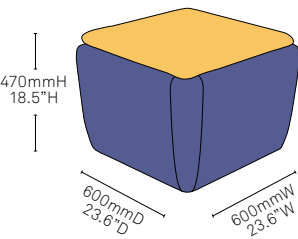
CATEGORY 4
Heirloom



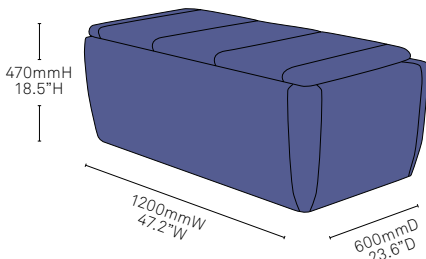
Specifications



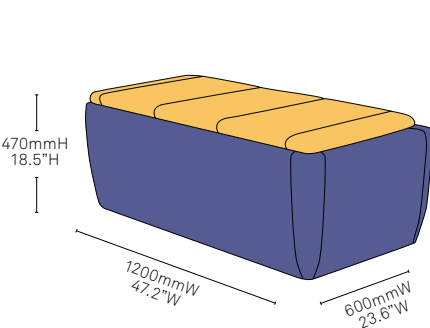
1 Seat Ottoman
Fully upholstered unit.
1 coloured plain fabric, vinyl
or leather.



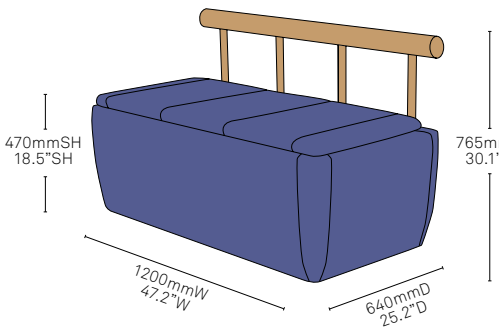
1 Seat Ottoman
Fully upholstered unit.
Combination of 2 coloured plain
fabrics, leather or vinyl.



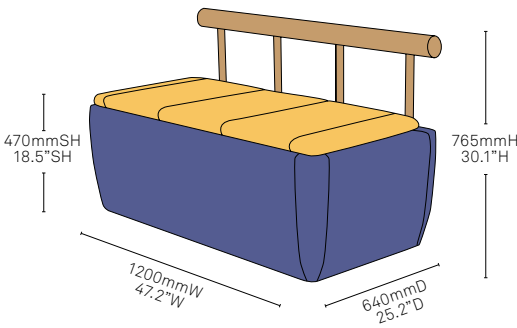
2 Seat Bench
Fully upholstered unit.
1 coloured plain fabric, vinyl
or leather.



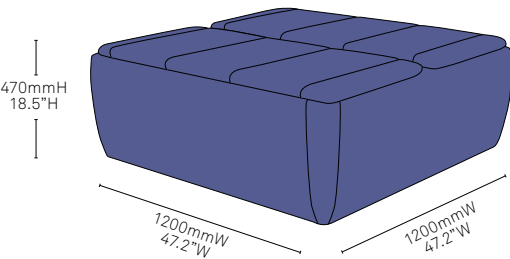
2 Seat Bench
Fully upholstered unit.
Combination of 2 coloured plain
fabrics, leather or vinyl.



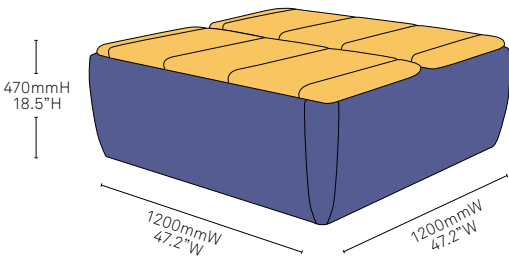
2 Seat Bench with Backrest
Fully upholstered unit.
1 coloured plain fabric, vinyl
or leather.



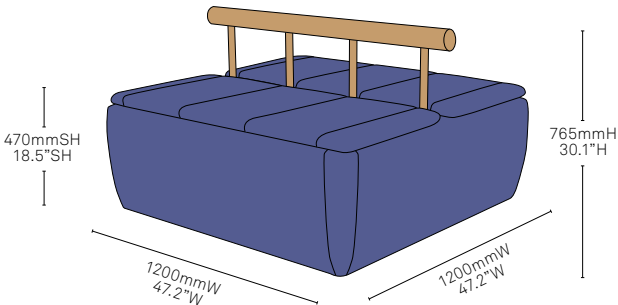
2 Seat Bench with Backrest
Fully upholstered unit with
backrest. Combination of 2
coloured plain fabrics, leather
or vinyl.



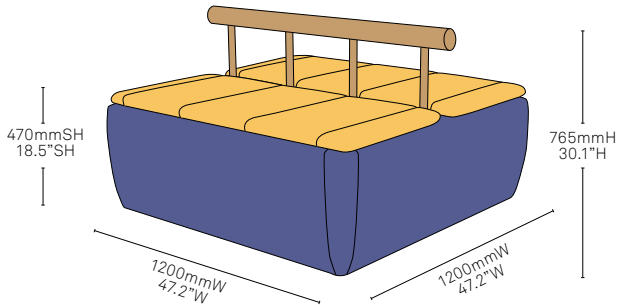
4 Seat Bench
Fully upholstered unit.
1 coloured plain fabric, vinyl
or leather.



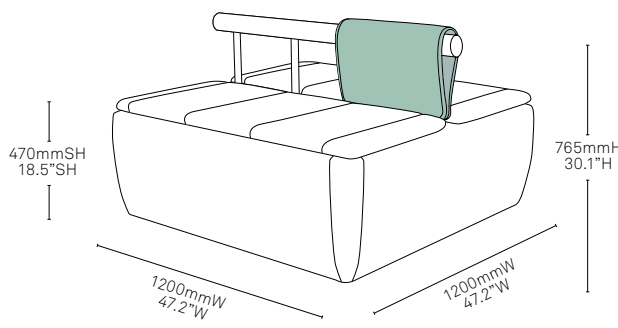
4 Seat Bench
Fully upholstered unit.
Combination of 2 coloured plain
fabrics, leather or vinyl.



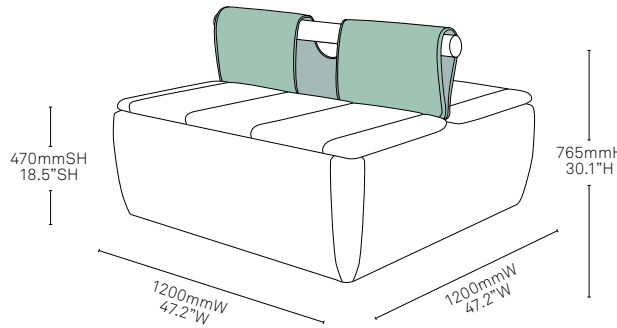
4 Seat Bench
Fully upholstered unit.
1 coloured plain fabric, vinyl
or leather.



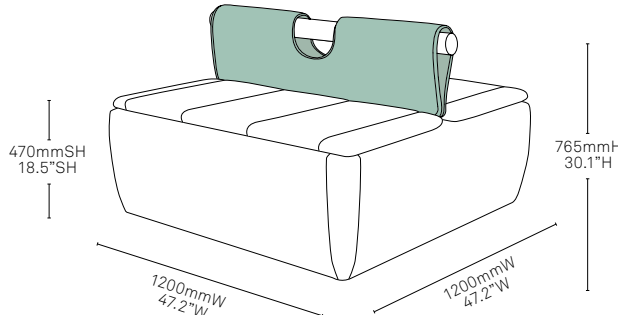
4 Seat Bench
Fully upholstered unit with
backrest. Combination of 2
coloured plain fabrics, leather
or vinyl.



**Backrest Blanket
Single (full)**



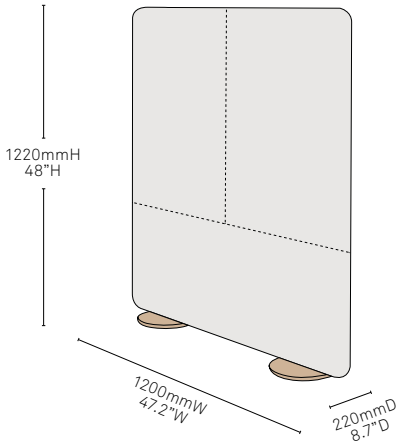
**Backrest Blanket
Double (half)**



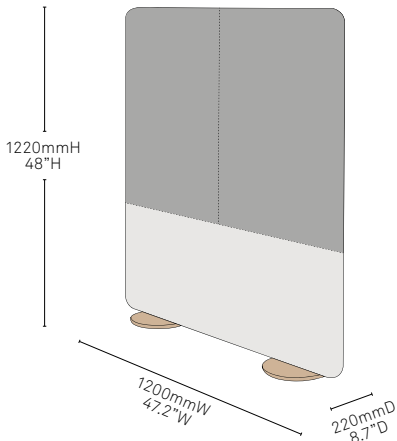
**Backrest Blanket
Double (full)**

Configurations

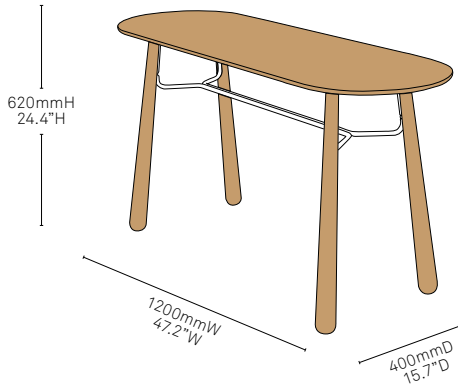
Examples



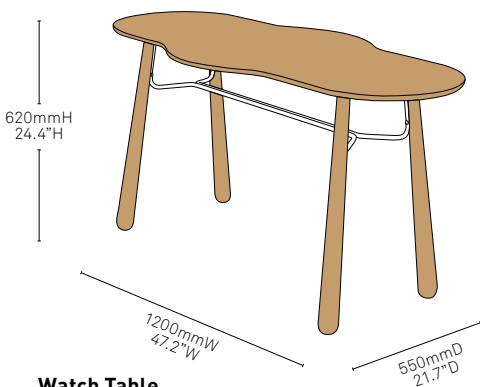
Fully Upholstered Sreen
Fully upholstered unit.
1 coloured plain fabric, vinyl
or leather.



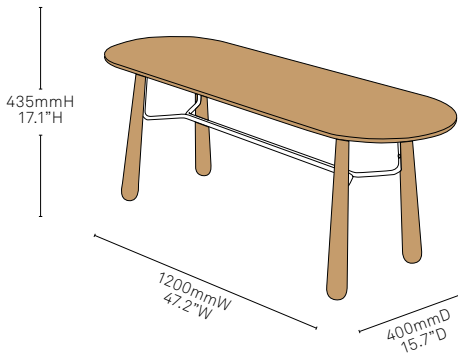
Mesh Screen
Mesh with base.
Upholstered in 1 coloured
plain fabric, vinyl or leather.



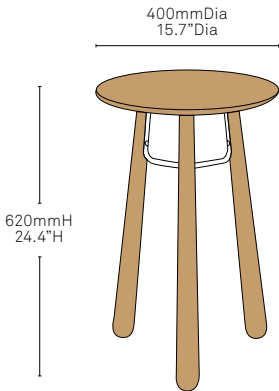
Capsule High Table



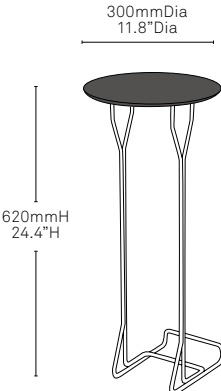
Watch Table



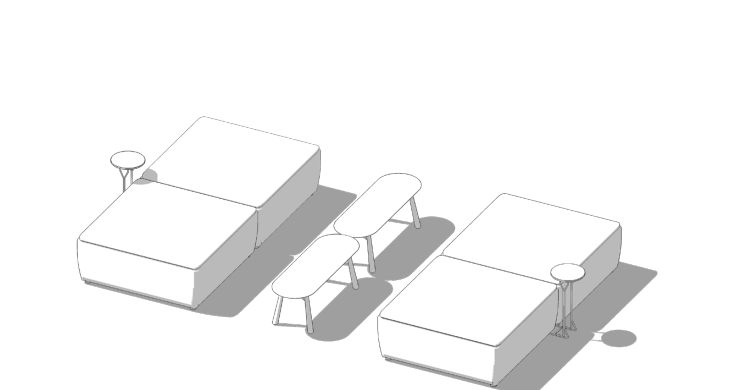
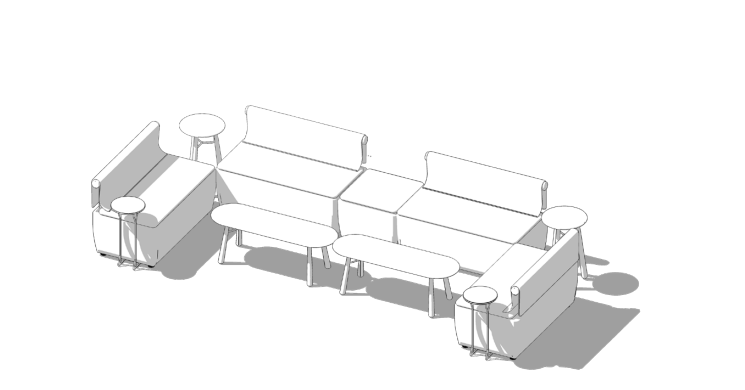
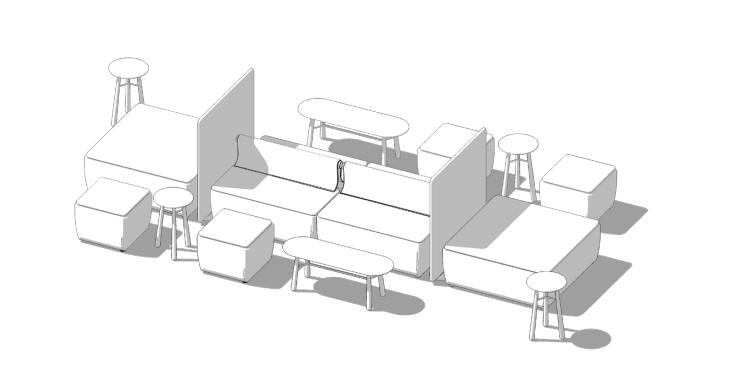
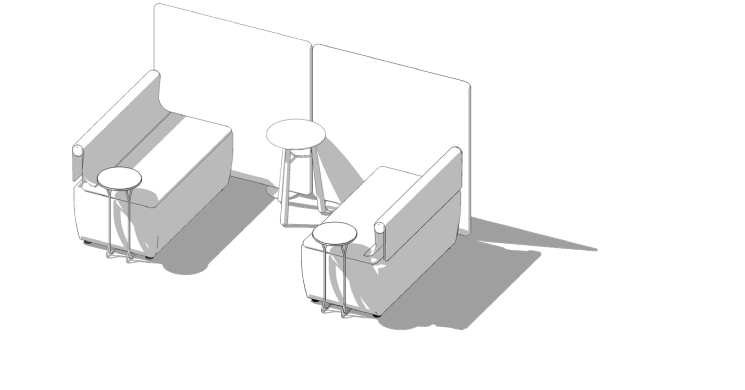
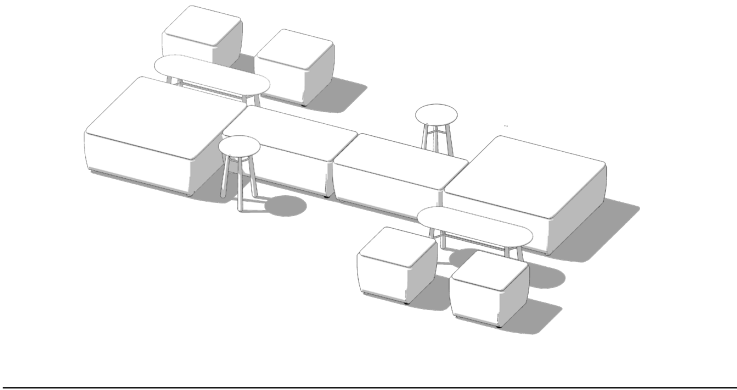
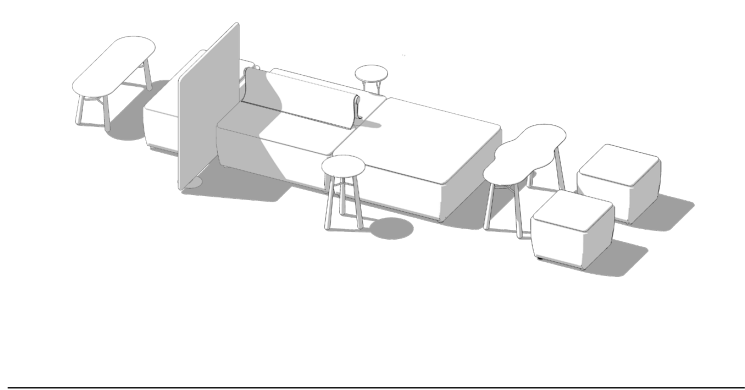
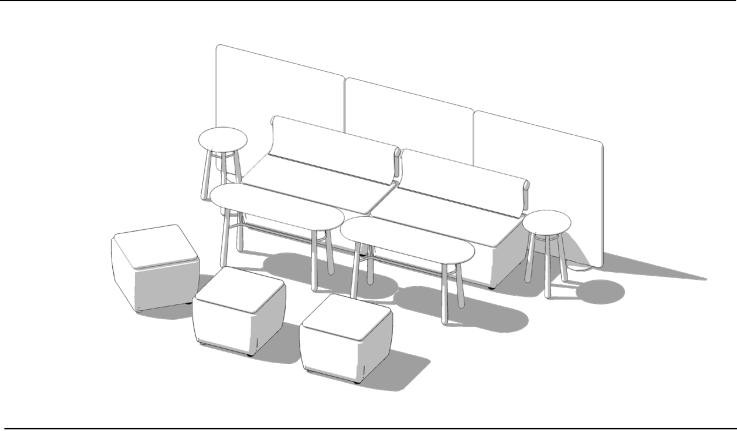
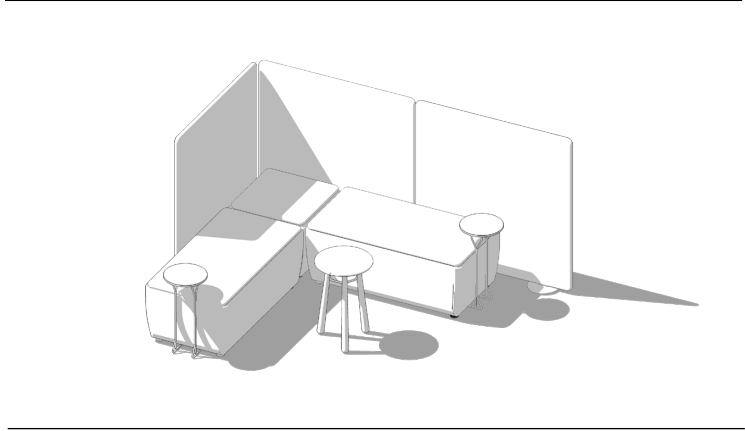
Capsule Low Table



Side Table



Metal Side Table







Ecology and sustainability

Schiavello's most important commitment to sustainability is the company-wide Environmental Management System under ISO 14001. The environmental design principles realised mean we design for the environment, focusing on efficient energy use and minimum emissions, longevity and durability, re-use and recycling of our products.

Our principles of ME WE (Materials, Energy, Waste Emissions) give us a simple way to think about how our operations impact the environment.

Printed on an Australian made paper stock that is PEFC Certified and made from elemental chlorine-free bleached pulp sourced from sustainably managed forests and non-controversial sources. It is manufactured by an ISO 14001 certified mill using renewable energy sources.

About Schiavello

Schiavello is a multi-disciplinary company dedicated to developing intelligent, inspiring, ecological and resilient solutions for the office, the home and public spaces.

Schiavello's concepts and products are developed in Australia by applying a design process that brings together the company's core design principles and engineering with the creativity of local and international designers.

The Schiavello head office and world-class manufacturing facilities are integral to our continually developing rich tapestry of knowledge. This knowledge ultimately assists us in informing the right solutions and tools for each organisation's needs and people, allowing us to consistently achieve our philosophy that 'Anything is possible'.

To find a Schiavello showroom or partner in your area, please visit [schiavellofurniture.com/find-us](https://www.schiavellofurniture.com/find-us)



All intellectual property rights and copyrights are reserved. Nothing contained in this brochure may be reproduced without written permission. Schiavello Group Pty Ltd reserves the right to change any or all details without prior notice. All dimensions stated within this document are nominal and/or approximate only and subject to variation.